



# Spare Parts List

**FHA.3127.1122**

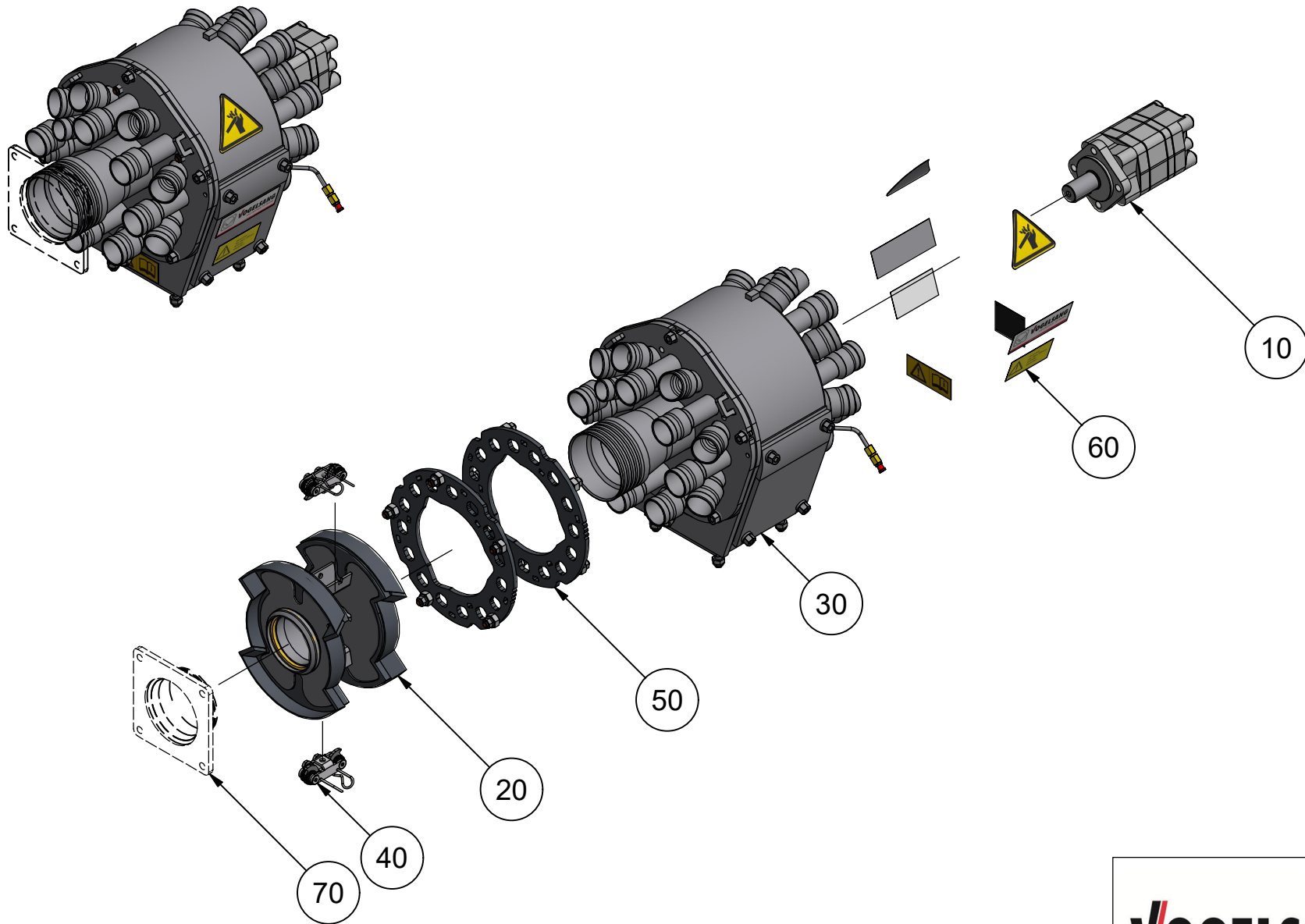
Serial Number

**ExaCut ECL24-40**

Machine Type

**DPK0000266**

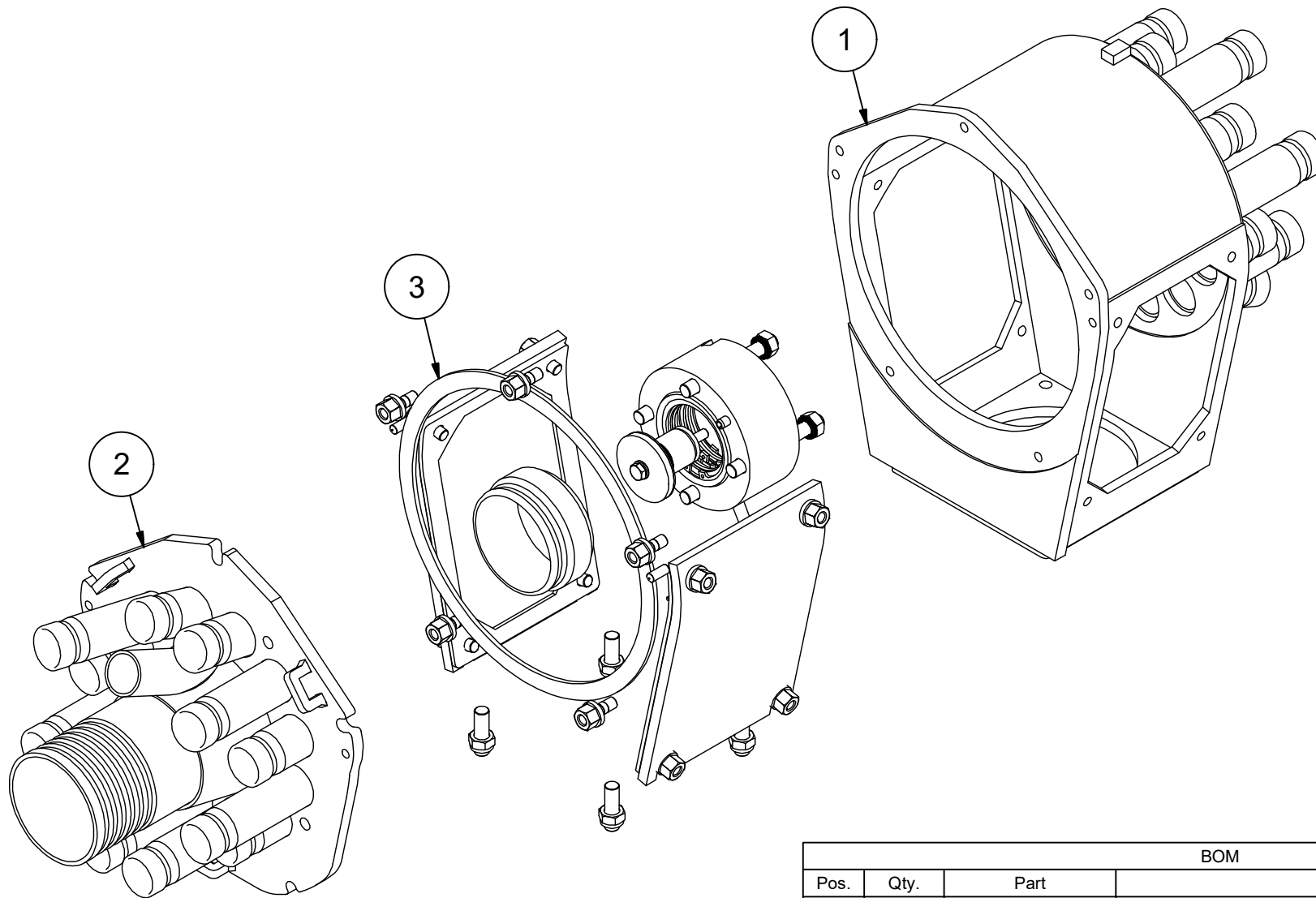
Part Number




		
IB2302610	© Vogelsang GmbH & Co. KG	

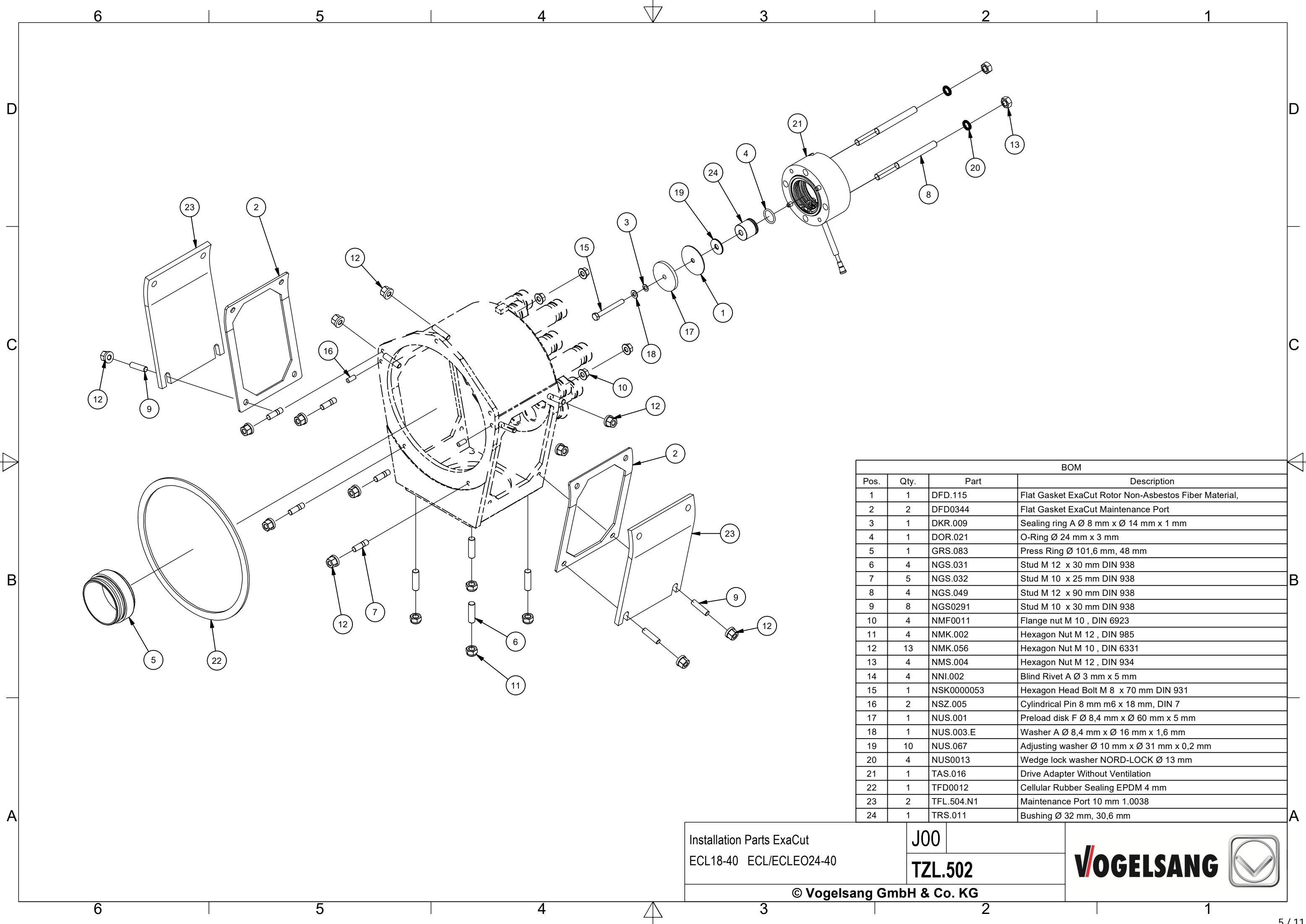
## Table of Contents

Drw-Pos.	ERP-Pos.	Denomination	Quantity	Part	Page
10	10	Housing, Parts Kit ECL24-40	1.000 St	GEC.001	4
20	20	Cutting Ring ECL24-40	2.000 St	TFL.515.N3	
30	30	Rotor ExaCut DN 100	1.000 St	GER0007	7
40	40	Hydraulic Motor Painted 200 cm <sup>3</sup> /U, Ø 32 mm	1.000 St	AOM.017.TF	
50	50	Eccentric Adjuster ExaCut , No, ,	2.000 St	TEV.005.N1	9
60	60	Label Turn off Drive	2.000 St	VAU.013.00	
70	70	Label Caution: Risk of Hand Injuries , , 100 mm x 113 mm,	2.000 St	VAU.014	
80	80	Label Operating Instructions ,	1.000 St	VAU.133	
90	90	Label Vogelsang Logo ,	2.000 St	VAU0046	
100	100	Name Plate 50 x 60 General	1.000 St	VAU0001	



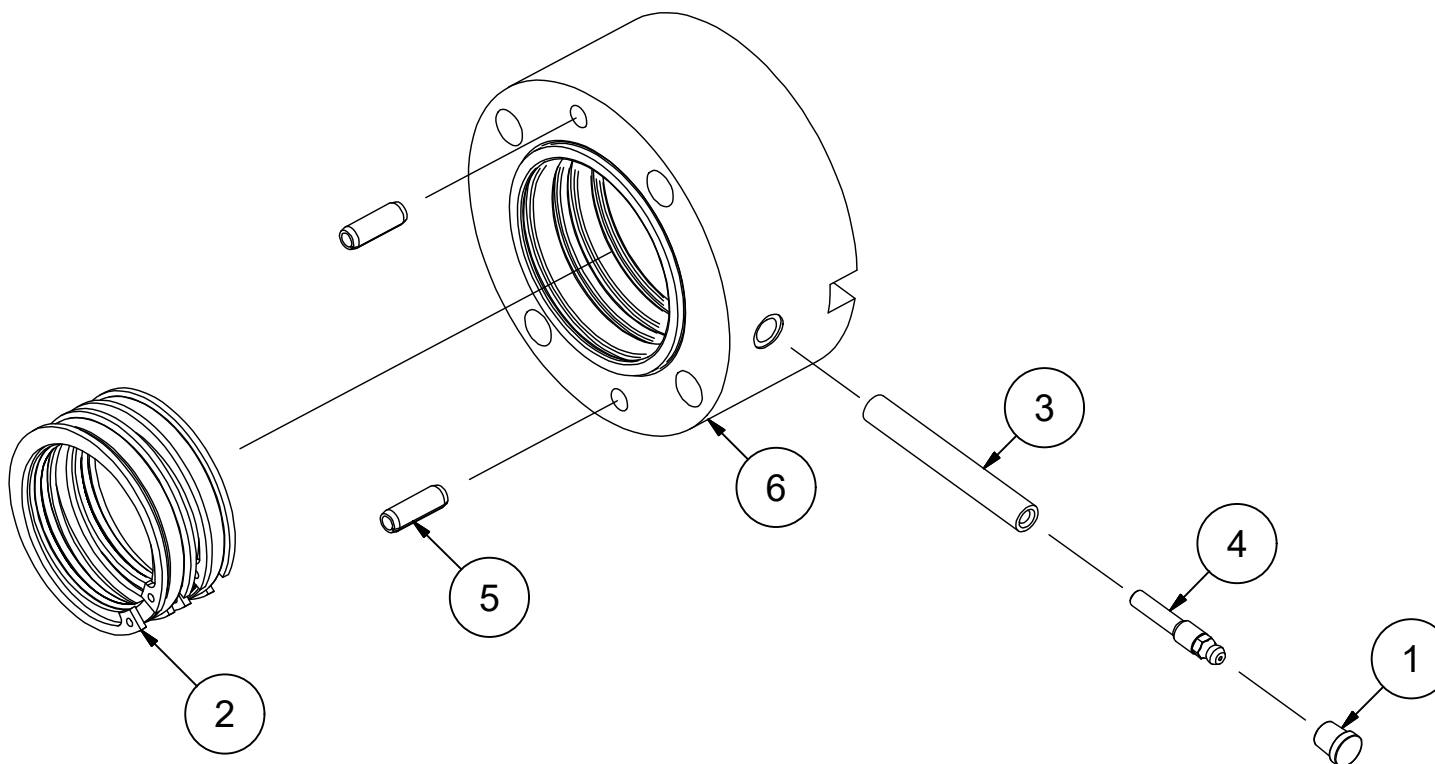
BOM			
Pos.	Qty.	Part	Description
2	1	TDE.501	Housing Cover, Machined ECL24-40
1	1	TEG.500.N1	Housing, Machined ECL24-40
3	1	TZL.502	Installation Parts ExaCut ECL18-40 ECL/ECLEO24-40

Housing, Parts Kit ECL24-40	A	
	GEC.001	



BOM			
Pos.	Qty.	Part	Description
1	1	DFD.115	Flat Gasket ExaCut Rotor Non-Asbestos Fiber Material,
2	2	DFD0344	Flat Gasket ExaCut Maintenance Port
3	1	DKR.009	Sealing ring A Ø 8 mm x Ø 14 mm x 1 mm
4	1	DOR.021	O-Ring Ø 24 mm x 3 mm
5	1	GRS.083	Press Ring Ø 101,6 mm, 48 mm
6	4	NGS.031	Stud M 12 x 30 mm DIN 938
7	5	NGS.032	Stud M 10 x 25 mm DIN 938
8	4	NGS.049	Stud M 12 x 90 mm DIN 938
9	8	NGS0291	Stud M 10 x 30 mm DIN 938
10	4	NMF0011	Flange nut M 10 , DIN 6923
11	4	NMK.002	Hexagon Nut M 12 , DIN 985
12	13	NMK.056	Hexagon Nut M 10 , DIN 6331
13	4	NMS.004	Hexagon Nut M 12 , DIN 934
14	4	NNI.002	Blind Rivet A Ø 3 mm x 5 mm
15	1	NSK0000053	Hexagon Head Bolt M 8 x 70 mm DIN 931
16	2	NSZ.005	Cylindrical Pin 8 mm m6 x 18 mm, DIN 7
17	1	NUS.001	Preload disk F Ø 8,4 mm x Ø 60 mm x 5 mm
18	1	NUS.003.E	Washer A Ø 8,4 mm x Ø 16 mm x 1,6 mm
19	10	NUS.067	Adjusting washer Ø 10 mm x Ø 31 mm x 0,2 mm
20	4	NUS0013	Wedge lock washer NORD-LOCK Ø 13 mm
21	1	TAS.016	Drive Adapter Without Ventilation
22	1	TFD0012	Cellular Rubber Sealing EPDM 4 mm
23	2	TFL.504.N1	Maintenance Port 10 mm 1.0038
24	1	TRS.011	Bushing Ø 32 mm, 30,6 mm

Installation Parts ExaCut ECL18-40 ECL/ECLEO24-40	J00	
	TZL.502	
© Vogelsang GmbH & Co. KG		



BOM			
Pos.	Qty.	Part	Description
1	1	BKA.001	Grease Nipple Cap Ø 12 mm x 12 mm
2	1	DDS0016	Seal Kit ExaCut , , , ETX
3	1	NKS.007	Grease Nipple Extension Male Thread M 10 x 1
4	1	NKS.009	Grease Nipple H1 M 6 x 1 mm
5	2	NSP.025	Spring Pin 8 mm x 24 mm, ISO 8752
6	1	PRS0416	Drive Adapter Ø 128 mm, 59,5 mm

Drive Adapter  
Without Ventilation

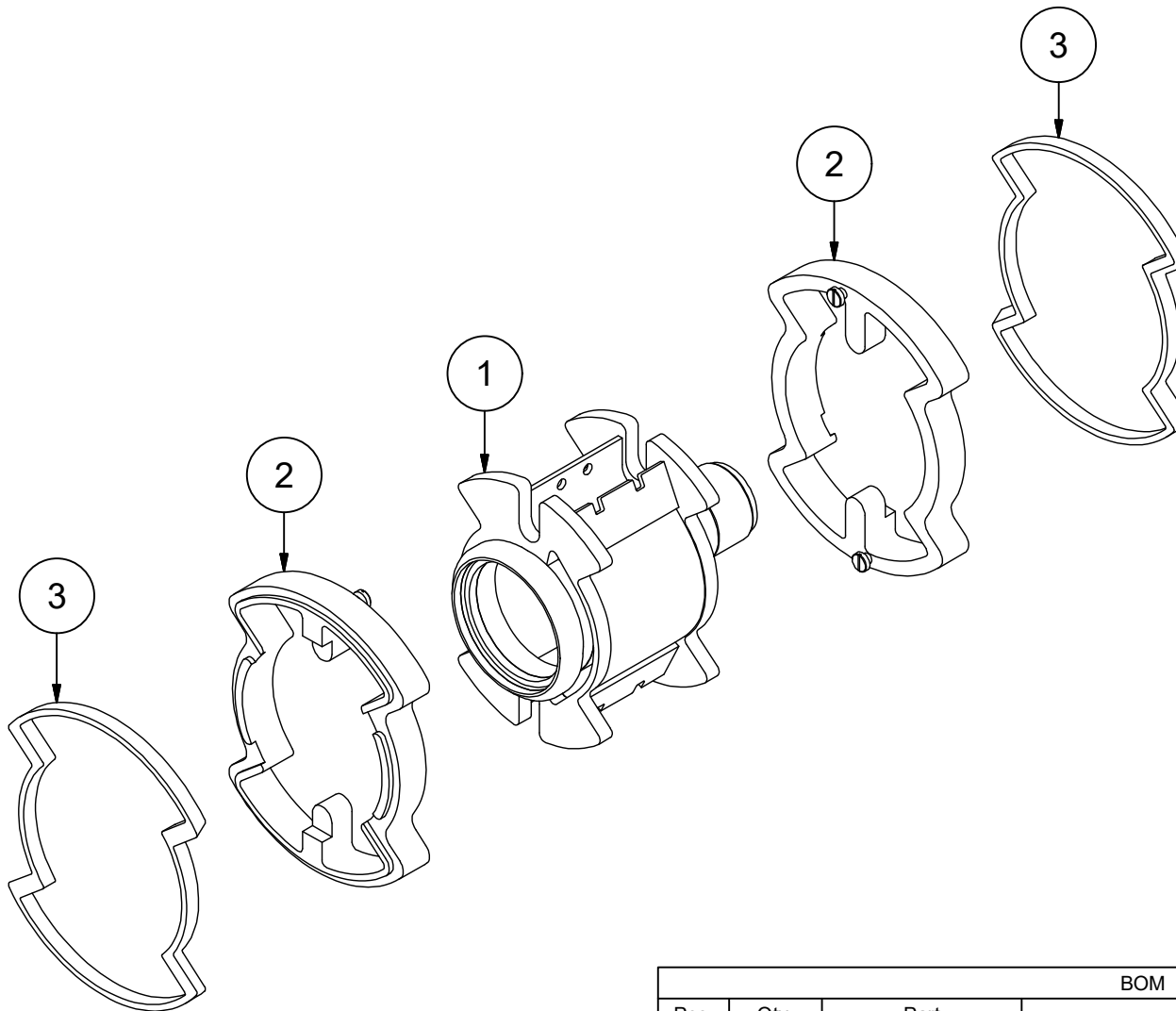
C

TAS.016

© Hugo Vogelsang Maschinenbau GmbH.

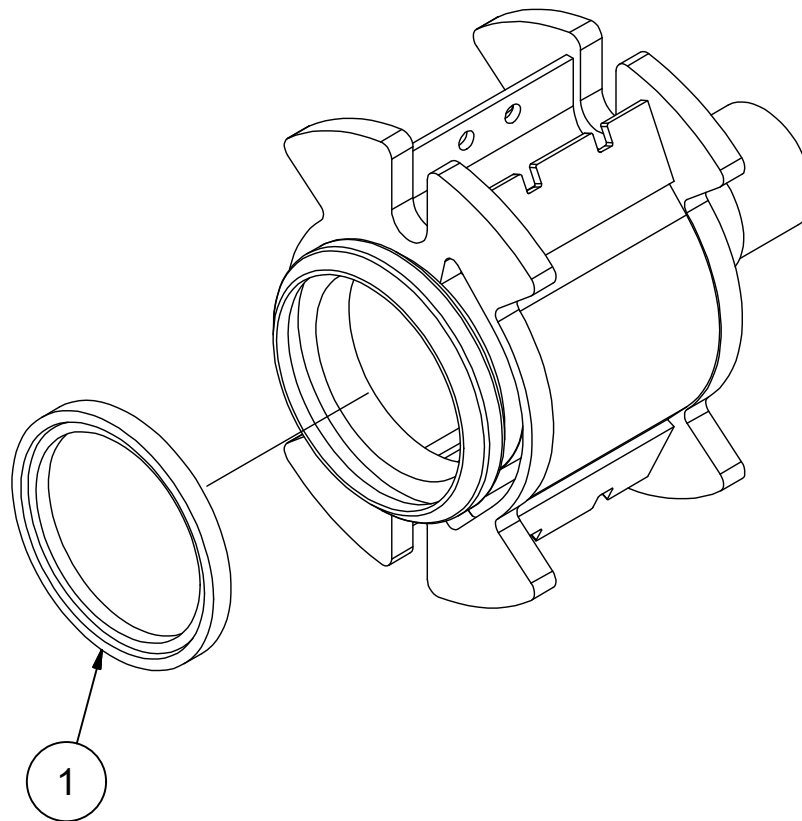
**VOGELSANG**





BOM			
Pos.	Qty.	Part	Description
1	1	GER0011	Rotor ExaCut DN 100
2	2	TMH0021	Blade Holder Set ECL/ECV Inlet Size: DN 100
3	2	TMS0051	Blade Ring ECL/ECV Inlet Size: DN 100

Rotor ExaCut DN 100	A	
	<b>GER0007</b>	



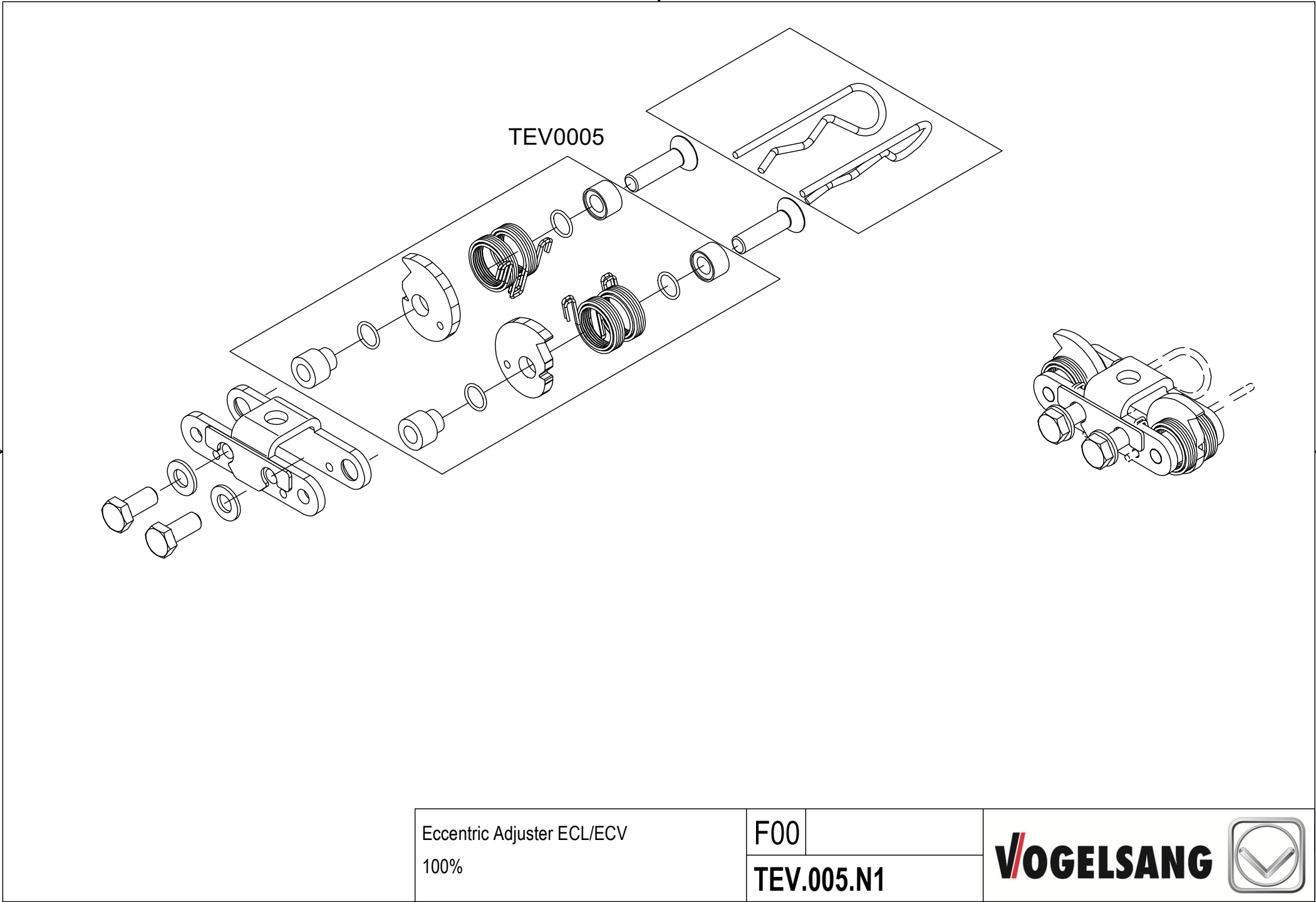
BOM			
Pos.	Qty.	Part	Description
1	1	DFD.116	Sealing Ring ECL/ECV MH24-45 Lubricated under Vacuum

Sealing Ring ECL/ECV MH24-45 Lubricated under Vacuum	<b>B</b>
	<b>GER0011</b>
<b>© Vogelsang GmbH &amp; Co. KG</b>	

**VOGELSANG**







Eccentric Adjuster ECL/ECV 100%	F00
	TEV.005.N1





## **Vogelsang GmbH & Co. KG**

Holthöge 10-14, 49632 Essen (Oldenburg), GERMANY

Phone: +49 (0) 5434 83 83 83  
+49 (0) 5434 83 99 99

Fax: +49 (0) 5434 83 10

[service@vogelsang.info](mailto:service@vogelsang.info)

[www.vogelsang.info](http://www.vogelsang.info)

## **Vogelsang Lutherstadt Eisleben**

Gewerbegebiet Rothenschirmbach Nr. 8, 06295 Lutherstadt Eisleben, GERMANY

Phone: +49 (0) 34776 91 92 14

Fax: +49 (0) 34776 91 92 60



Subject to change without notice. Schematic drawings without claim to completeness.

