



Spare Parts List

Serial Number

ExaCut ECL40 DN40

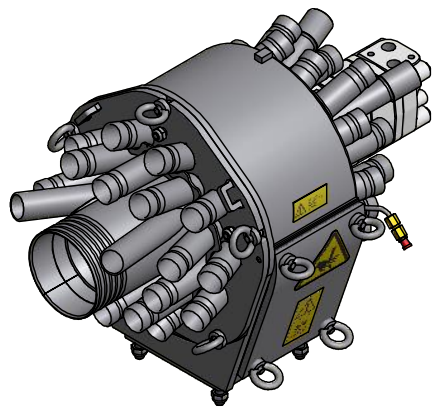
Machine Type

DPK0000450

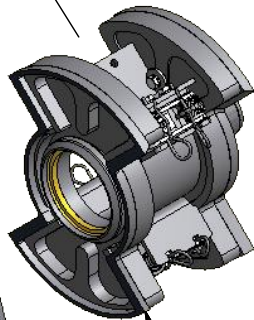
Part Number

Customer

Order Number



50



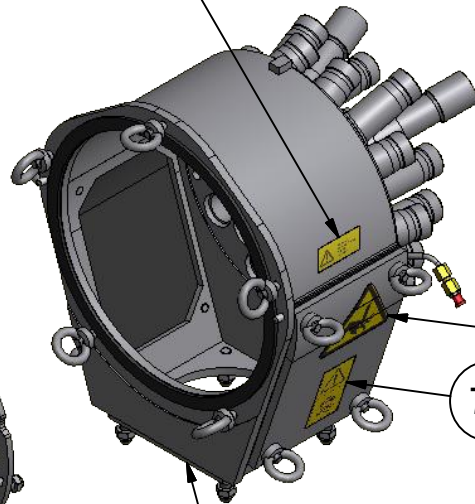
30



20

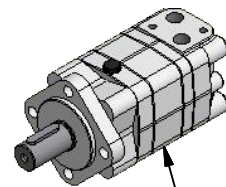


20



80

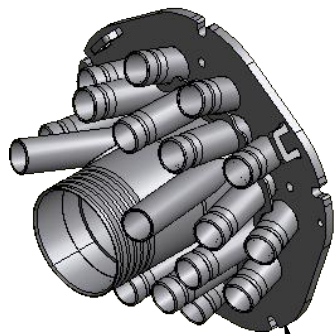
10



40

60

70



10

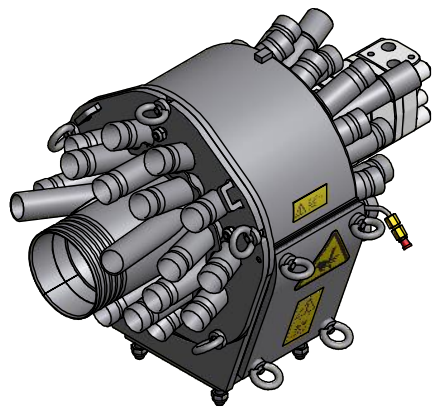
ExaCut ECL40-40
für ETL

A

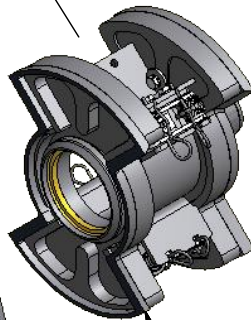
VOGELSANG



Pos.	Denomination	Quantity	Part	Page
0	ExaCut ECL40 DN40		DPK0000450	4
10	Housing, Parts Kit ECL40-40	1 St	GEC.003	5
10.3000	ExaCut, Installation Parts	1 St	TZL.702	6
10.3000.1000	Drive Adapter Double Ventilation 90°	1 St	TAS.015	7
10.3000.1000.1000	Seal Kit ExaCut Shaft Diameter \varnothing 32 mm	1 St	DDS0016	8
20	Cutting Ring ECL40-40	2 St	TFL.717	
30	ExaCut Rotor DN 125	1 St	GER0004	9
30.1000	ExaCut Rotor DN 125	1 St	GER0016	10
40	Hydraulic Motor Painted 315 cm ³ /U, 32,0 mm	1 St	AOM.074.TF	
50	Eccentric Adjuster ECL/ECV 75%	4 St	TEV.005.N1.T1	11
50.2000	Torsion Spring Set Double Torsion Spring with Torsion	1 St	NFE0085	12
60	Label Turn off Drive	2 St	VAU.013.00	
70	Label Caution: Risk of Hand Injuries 100 mm x 113 mm	2 St	VAU.014	
80	Label Operating Instructions	1 St	VAU.133	
90	Label Vogelsang Logo	2 St	VAU0046	
100		1 St	VAU0120	



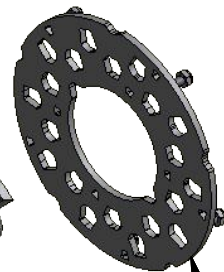
50



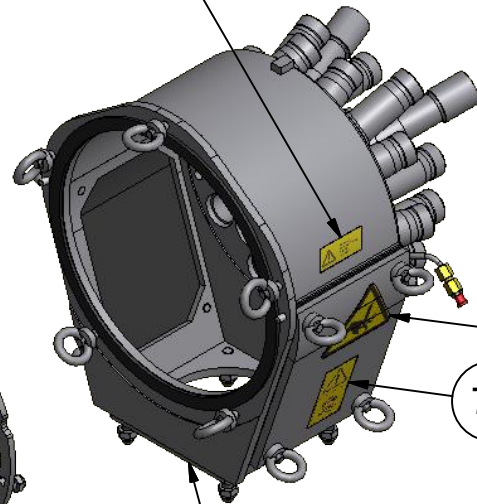
30



20



20

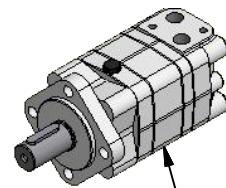


80

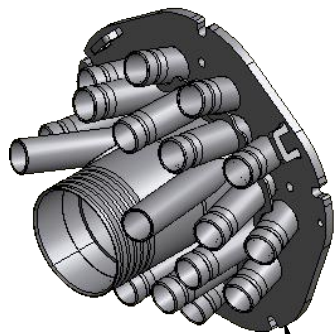
10

60

70



40



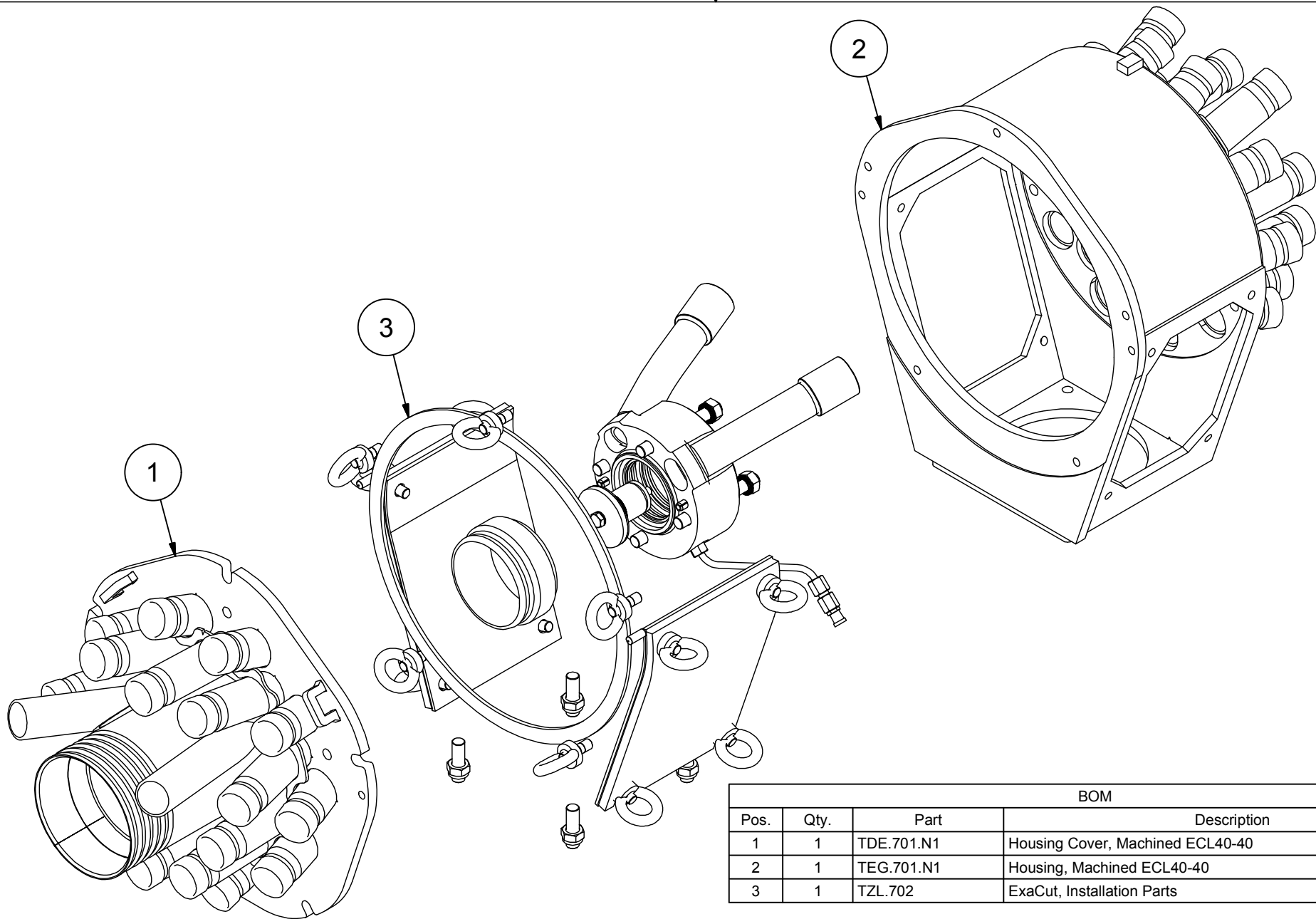
10

ExaCut ECL40-40
für ETL

A

VOGELSANG





BOM			
Pos.	Qty.	Part	Description
1	1	TDE.701.N1	Housing Cover, Machined ECL40-40
2	1	TEG.701.N1	Housing, Machined ECL40-40
3	1	TZL.702	ExaCut, Installation Parts

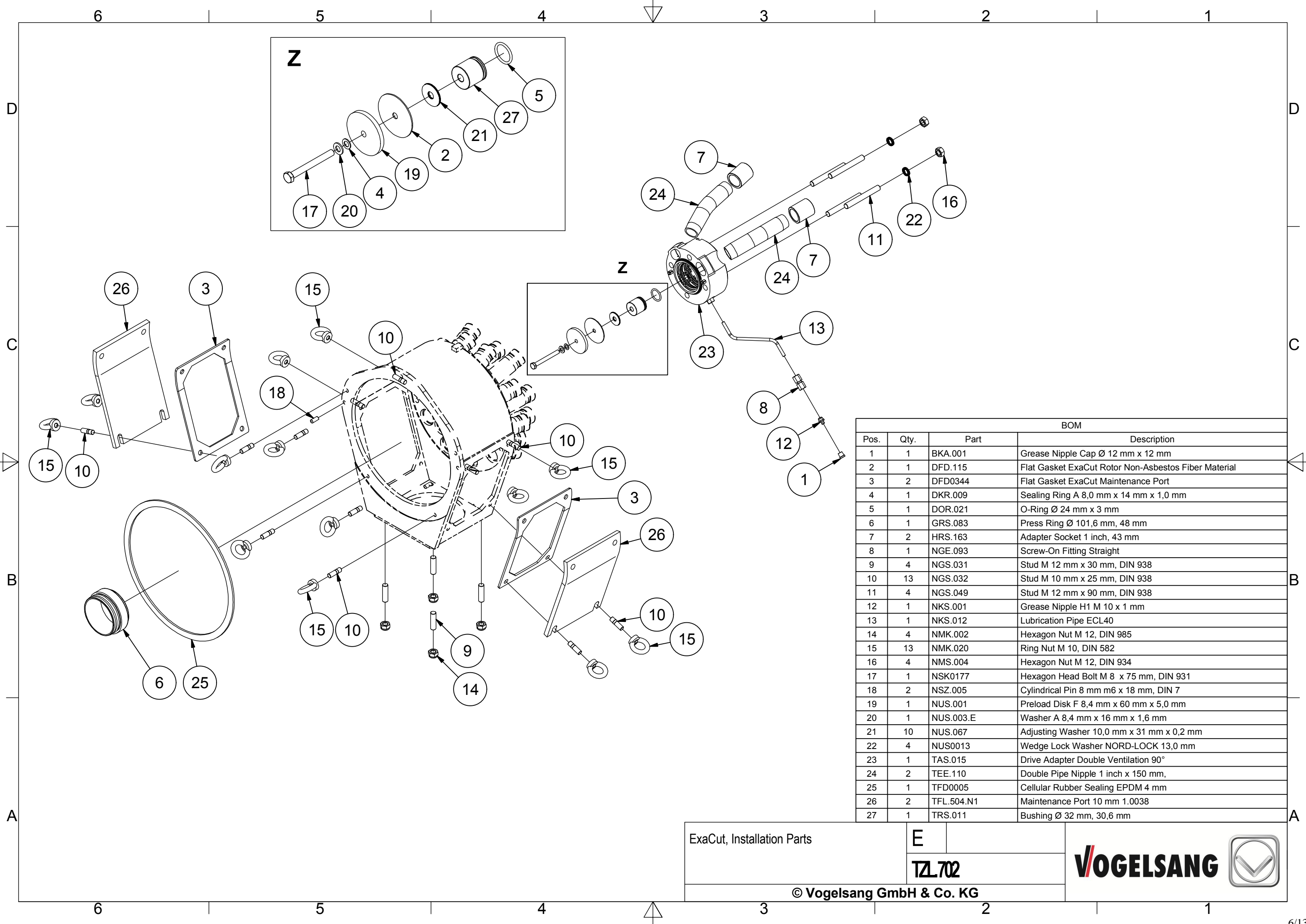
Housing, Parts Kit
ECL40-40

A

GEC.003

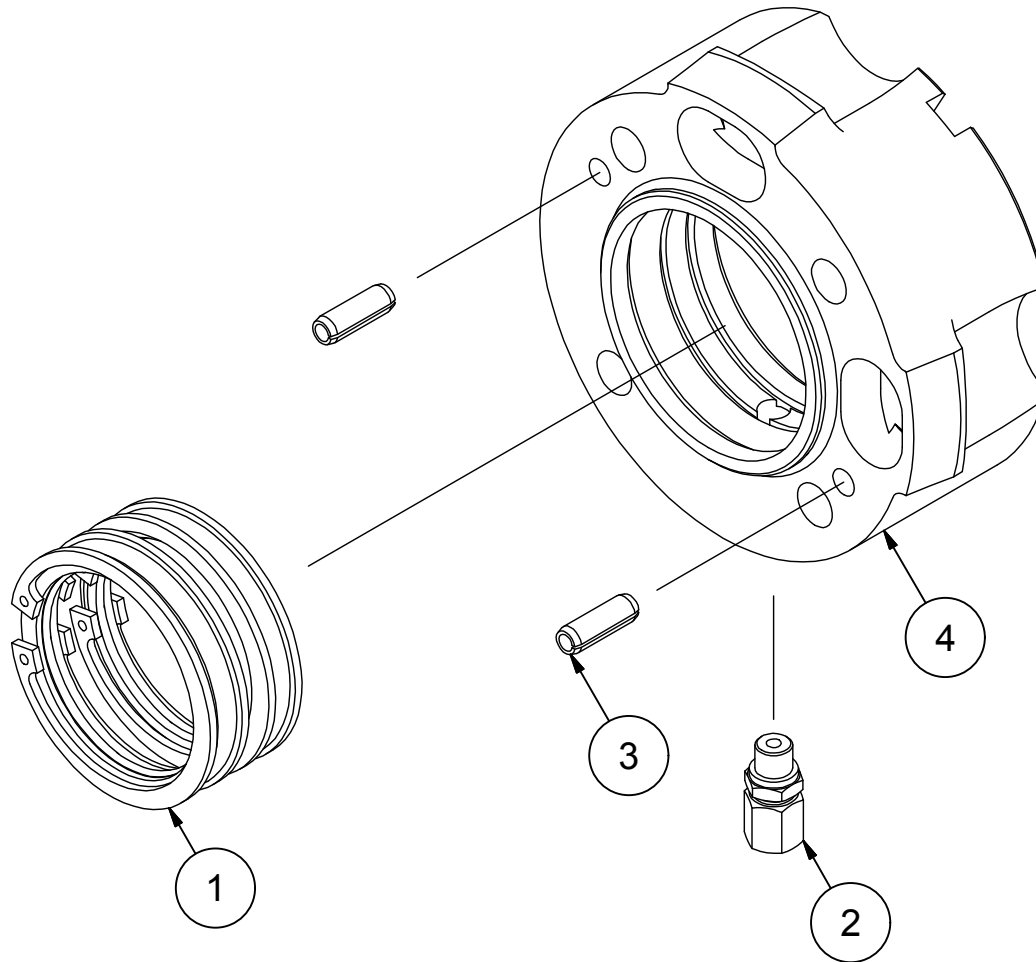
VOGELSANG





BOM			
Pos.	Qty.	Part	Description
1	1	BKA.001	Grease Nipple Cap Ø 12 mm x 12 mm
2	1	DFD.115	Flat Gasket ExaCut Rotor Non-Asbestos Fiber Material
3	2	DFD0344	Flat Gasket ExaCut Maintenance Port
4	1	DKR.009	Sealing Ring A 8,0 mm x 14 mm x 1,0 mm
5	1	DOR.021	O-Ring Ø 24 mm x 3 mm
6	1	GRS.083	Press Ring Ø 101,6 mm, 48 mm
7	2	HRS.163	Adapter Socket 1 inch, 43 mm
8	1	NGE.093	Screw-On Fitting Straight
9	4	NGS.031	Stud M 12 mm x 30 mm, DIN 938
10	13	NGS.032	Stud M 10 mm x 25 mm, DIN 938
11	4	NGS.049	Stud M 12 mm x 90 mm, DIN 938
12	1	NKS.001	Grease Nipple H1 M 10 x 1 mm
13	1	NKS.012	Lubrication Pipe ECL40
14	4	NMK.002	Hexagon Nut M 12, DIN 985
15	13	NMK.020	Ring Nut M 10, DIN 582
16	4	NMS.004	Hexagon Nut M 12, DIN 934
17	1	NSK0177	Hexagon Head Bolt M 8 x 75 mm, DIN 931
18	2	NSZ.005	Cylindrical Pin 8 mm m6 x 18 mm, DIN 7
19	1	NUS.001	Preload Disk F 8,4 mm x 60 mm x 5,0 mm
20	1	NUS.003.E	Washer A 8,4 mm x 16 mm x 1,6 mm
21	10	NUS.067	Adjusting Washer 10,0 mm x 31 mm x 0,2 mm
22	4	NUS0013	Wedge Lock Washer NORD-LOCK 13,0 mm
23	1	TAS.015	Drive Adapter Double Ventilation 90°
24	2	TEE.110	Double Pipe Nipple 1 inch x 150 mm,
25	1	TFD0005	Cellular Rubber Sealing EPDM 4 mm
26	2	TFL.504.N1	Maintenance Port 10 mm 1.0038
27	1	TRS.011	Bushing Ø 32 mm, 30,6 mm

ExaCut, Installation Parts	E	
	TZL702	
© Vogelsang GmbH & Co. KG		



BOM			
Pos.	Qty.	Part	Description
1	1	DDS0016	Seal Kit ExaCut Shaft Diameter Ø 32 mm
2	1	NGE.094	Screw-In Fitting Straight 6 L - M 10 x 1
3	2	NSP.025	Spring Pin 8 mm x 24 mm, ISO 8752
4	1	TRS0016	Drive Adapter Ø 149 mm, 62 mm

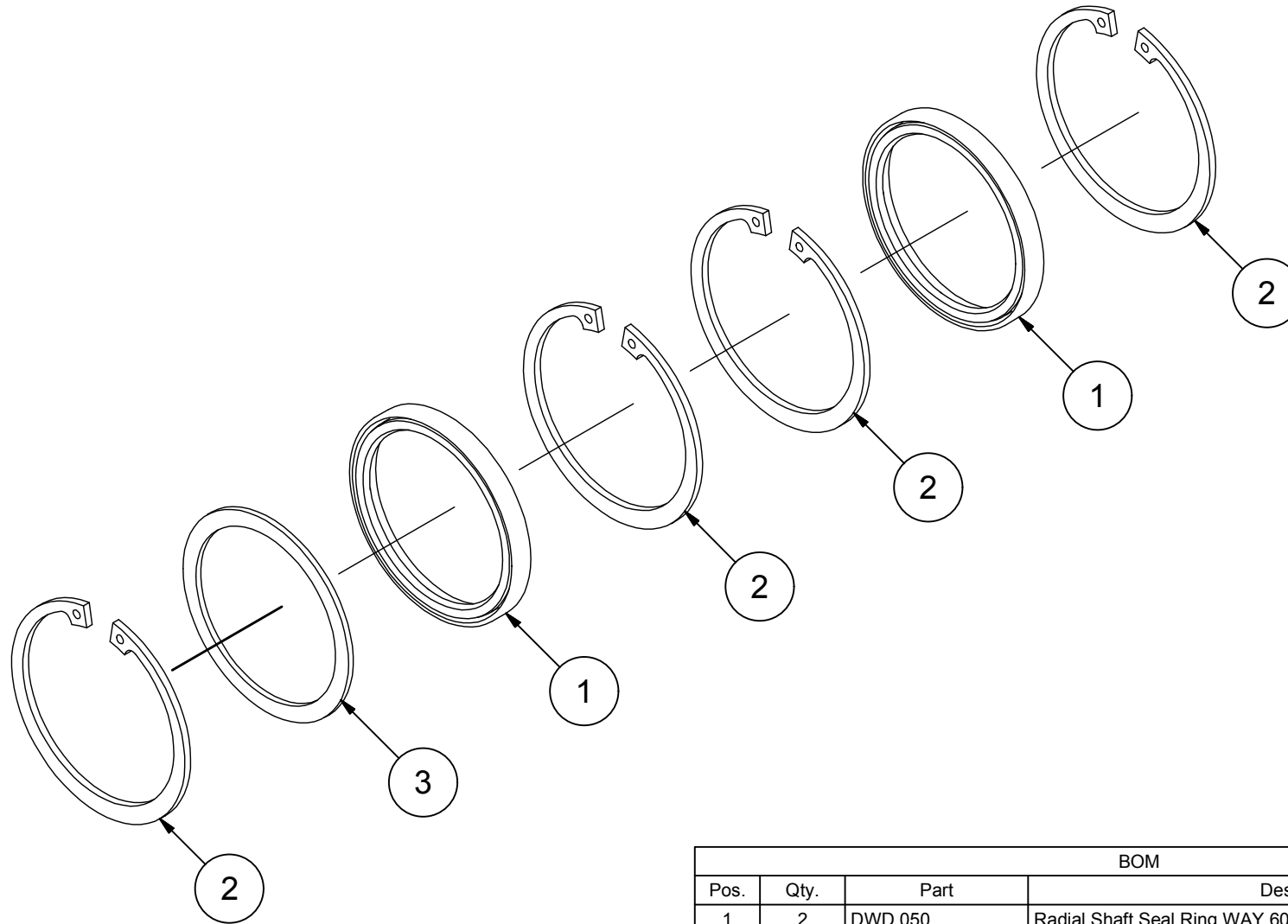
Drive Adapter
Double Ventilation 90°

C

TAS015

VOGELSANG





BOM			
Pos.	Qty.	Part	Description
1	2	DWD.050	Radial Shaft Seal Ring WAY 60 mm x 72 mm x 7 mm
2	4	NSR.025	Retaining Ring Ø 72 mm x 2,5 mm
3	1	NUS.060	Washer 60,0 mm x 71,8 mm x 2,0 mm

Seal Kit ExaCut
Shaft Diameter Ø 32 mm

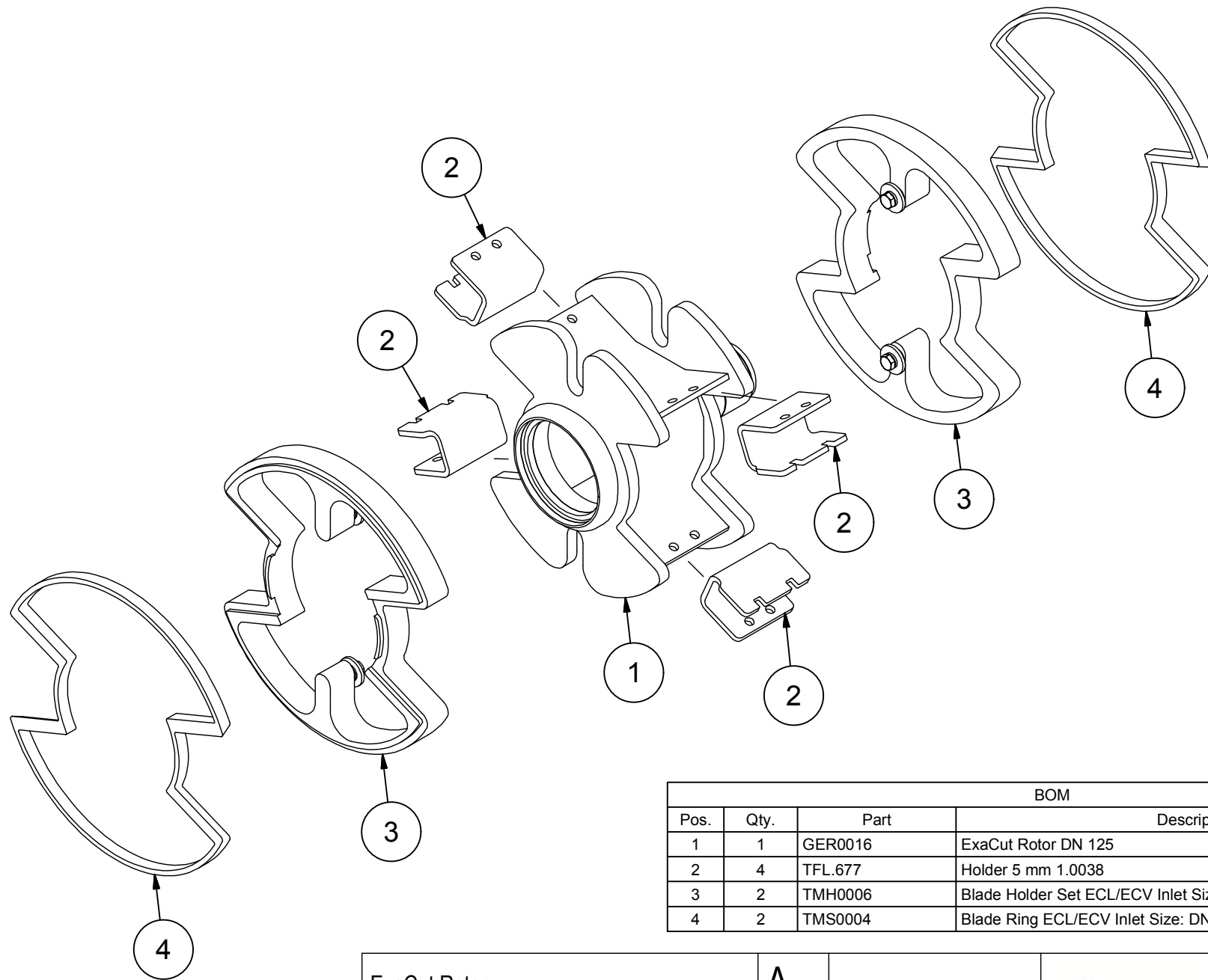
A

DDS0016

VOGELSANG



© Hugo Vogelsang Maschinenbau GmbH.



BOM			
Pos.	Qty.	Part	Description
1	1	GER0016	ExaCut Rotor DN 125
2	4	TFL.677	Holder 5 mm 1.0038
3	2	TMH0006	Blade Holder Set ECL/ECV Inlet Size: DN 125
4	2	TMS0004	Blade Ring ECL/ECV Inlet Size: DN 125

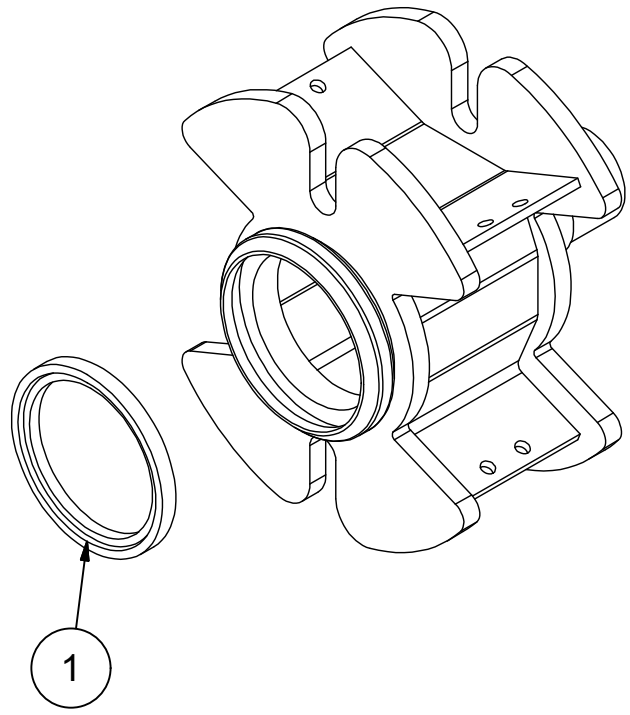
ExaCut Rotor
DN 125

A

GER0004

VOGELSANG





BOM			
Pos.	Qty.	Part	Description
1	1	DFD.116	Sealing Ring ECL/ ECV MH24-45 Lubricated under Vacuum

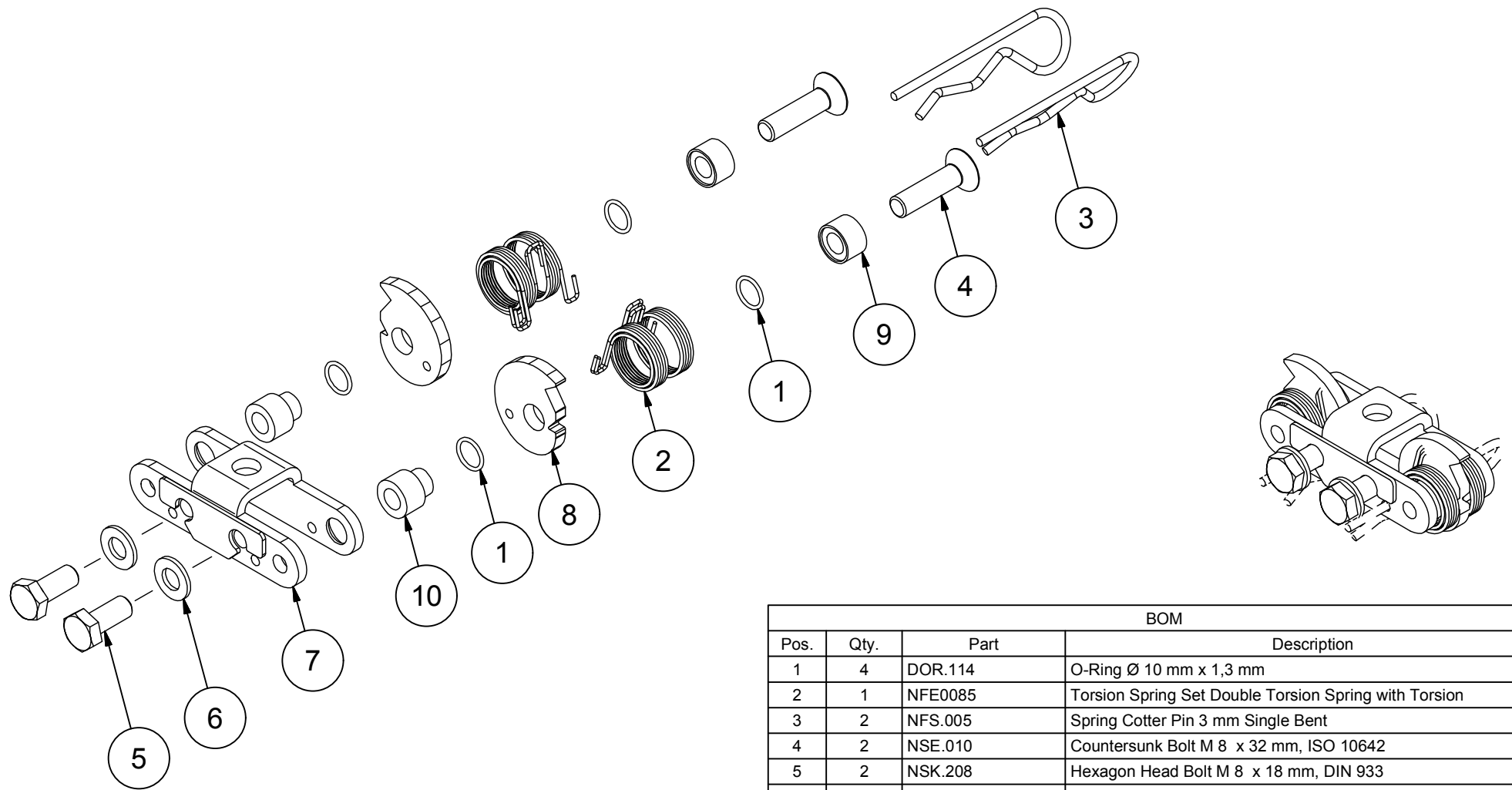
Sealing Ring ECL/ ECV MH24-45
Lubricated under Vacuum

A

GER0016

© Hugo Vogelsang Maschinenbau GmbH.





BOM			
Pos.	Qty.	Part	Description
1	4	DOR.114	O-Ring Ø 10 mm x 1,3 mm
2	1	NFE0085	Torsion Spring Set Double Torsion Spring with Torsion
3	2	NFS.005	Spring Cotter Pin 3 mm Single Bent
4	2	NSE.010	Countersunk Bolt M 8 x 32 mm, ISO 10642
5	2	NSK.208	Hexagon Head Bolt M 8 x 18 mm, DIN 933
6	2	NUS.003.E	Washer A 8,4 mm x 16 mm x 1,6 mm
7	1	TEA.012	Support Bracket 1.4301
8	2	TFL.566.N2	Eccentric for Adjuster 4,75 mm 1.4034
9	2	TRS.025.N1	Turned Part, Raw Part Ø 14,4 mm x 8,9 mm
10	2	TRS.026.N1	Turned Part, Raw Part Ø 14,4 mm x 15,1 mm

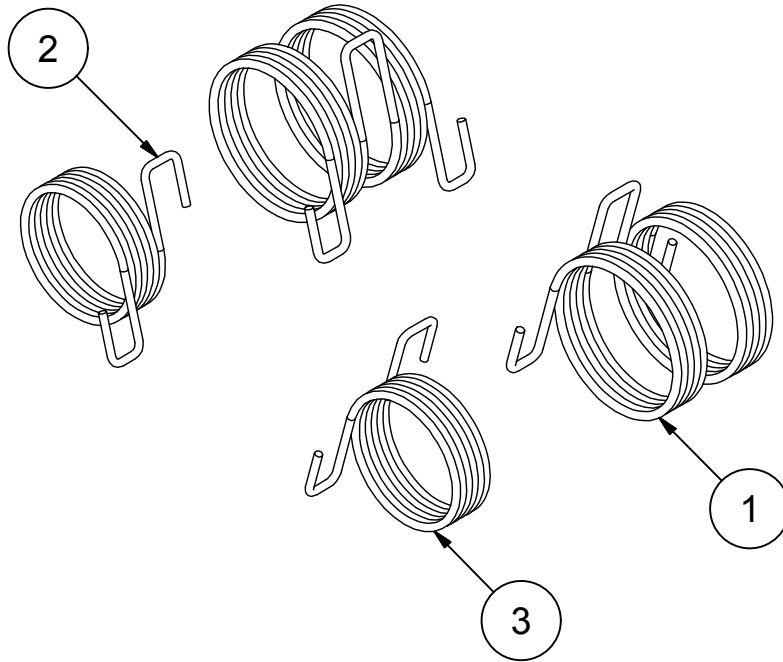
Eccentric Adjuster ECL/ECV
75%

C

TEV.005.N1.T1

VOGELSANG





BOM			
Pos.	Qty.	Part	Description
1	2	NFE.042	Double Torsion Spring 1,2 mm x 21,5 mm
2	1	NFE.040	Torsion Spring 1,1 mm x 18,4 mm
3	1	NFE.041	Torsion Spring 1,1 mm x 18,4 mm

Torsion Spring Set Double
Torsion Spring with Torsion

A

NFE0085

VOGELSANG



© Hugo Vogelsang Maschinenbau GmbH.

**Vogelsang GmbH & Co. KG**

Holthöhe 10-14, 49632 Essen/Oldb., GERMANY

Phone: +49 (0) 5434 83 83 83
+49 (0) 5434 83 99 99

Fax: +49 (0) 5434 83 10

service@vogelsang.info

www.vogelsang.info

Vogelsang Lutherstadt Eisleben

Gewerbegebiet Rothenschirmbach Nr. 8, 06295 Lutherstadt Eisleben, GERMANY

Phone: +49 (0) 34776 91 92 14

Fax: +49 (0) 34776 91 92 60

ENGINEERED TO WORK**Australia**
Vogelsang Pty. Ltd.
vogelsang.com.au**Denmark**
Vogelsang A/S
vogelsang-as.dk**Italy**
Vogelsang Italy Srl
vogelsang-srl.it**Russia**
Vogelsang Russland
vogelsang.ru**USA**
Vogelsang USA Ltd.
vogelsangusa.com**Austria**
Vogelsang Austria GmbH
vogelsang-austria.at**Finland**
Vogelsang Oy
vogelsang.fi**Malaysia**
Vogelsang Malaysia
vogelsang.info**South Korea**
Vogelsang Korea Co., Ltd.
vogelsang.co.kr**Brasil**
Vogelsang Brasil Ltda.
vogelsang.com.br**France**
Vogelsang France S.A.R.L.
vogelsang.fr**Mexico**
Vogelsang De México
S.de R.L. de CV
vogelsang.mx**Spain**
Vogelsang S.L.
vogelsang.es**China**
Vogelsang Mechanical
Engineering (Shanghai) Co., Ltd.
vogelsang.com.cn**India**
Vogelsang India Private Limited
vogelsangindia.com**Poland**
Vogelsang Poland Sp. z o.o.
vogelsang.pl**Sweden**
Vogelsang Sverige AB
vogelsang.se**Czech Republic**
Vogelsang CZ s.r.o.
vogelsang-czech.cz**Ireland**
Vogelsang Irland
vogelsang.ie**Romania**
Vogelsang Romania SRL
vogelsang.ro**United Kingdom**
Vogelsang Ltd.
vogelsang.co.uk

We reserve the right to make technical modifications to the diagrams and information presented in this document in the event that such modifications become necessary for the enhancement of the machine.