



Spare Parts List

Serial Number

ExaCut ECV48 DN40

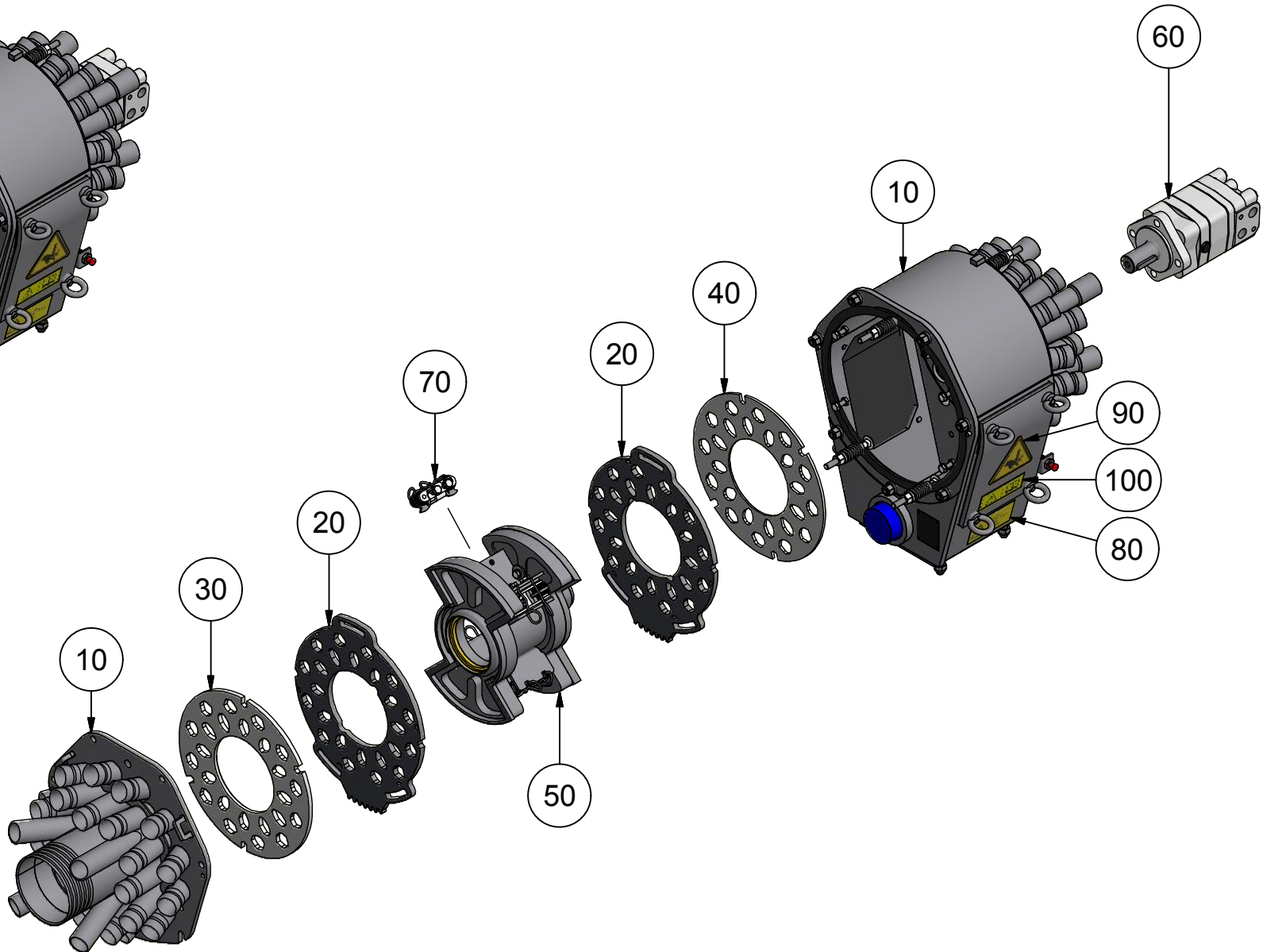
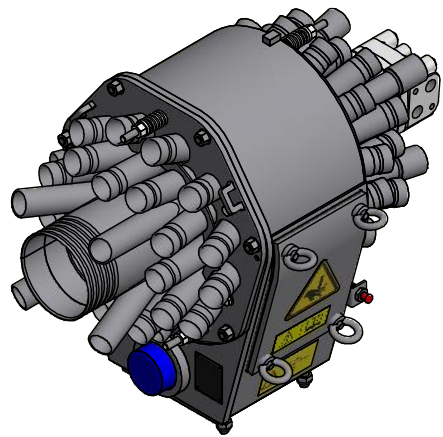
Machine Type

DPK0000355

Part Number

Customer

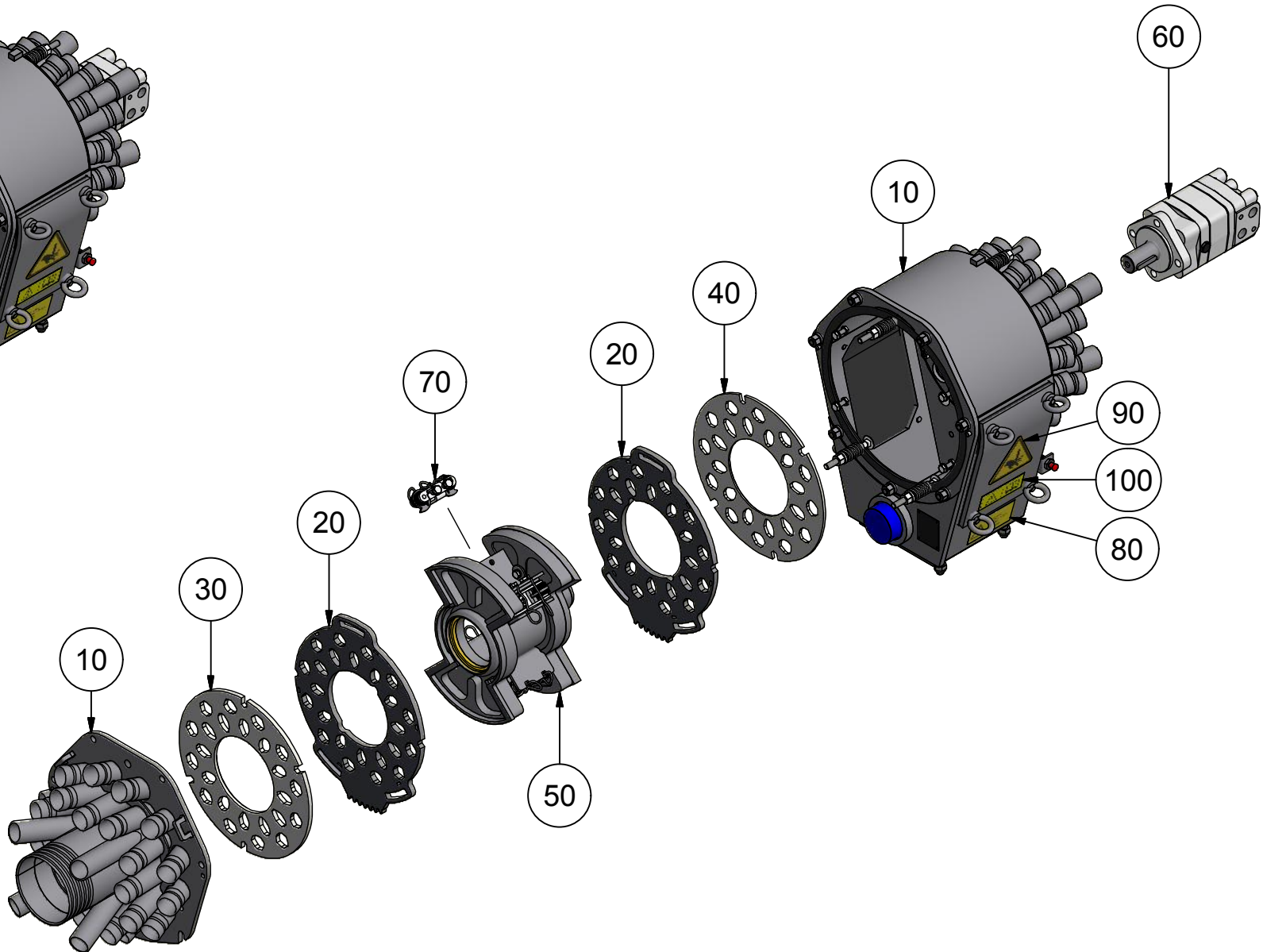
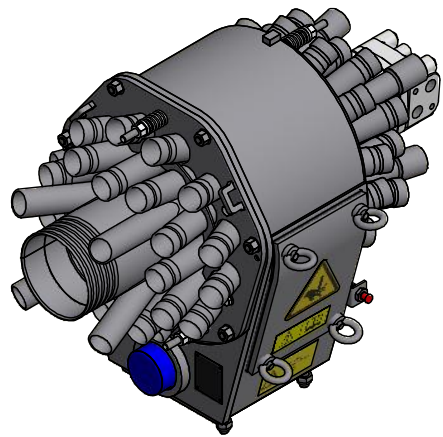
Order Number



A	
DKJXX	
© Hugo Vogelsang Maschinenbau GmbH.	

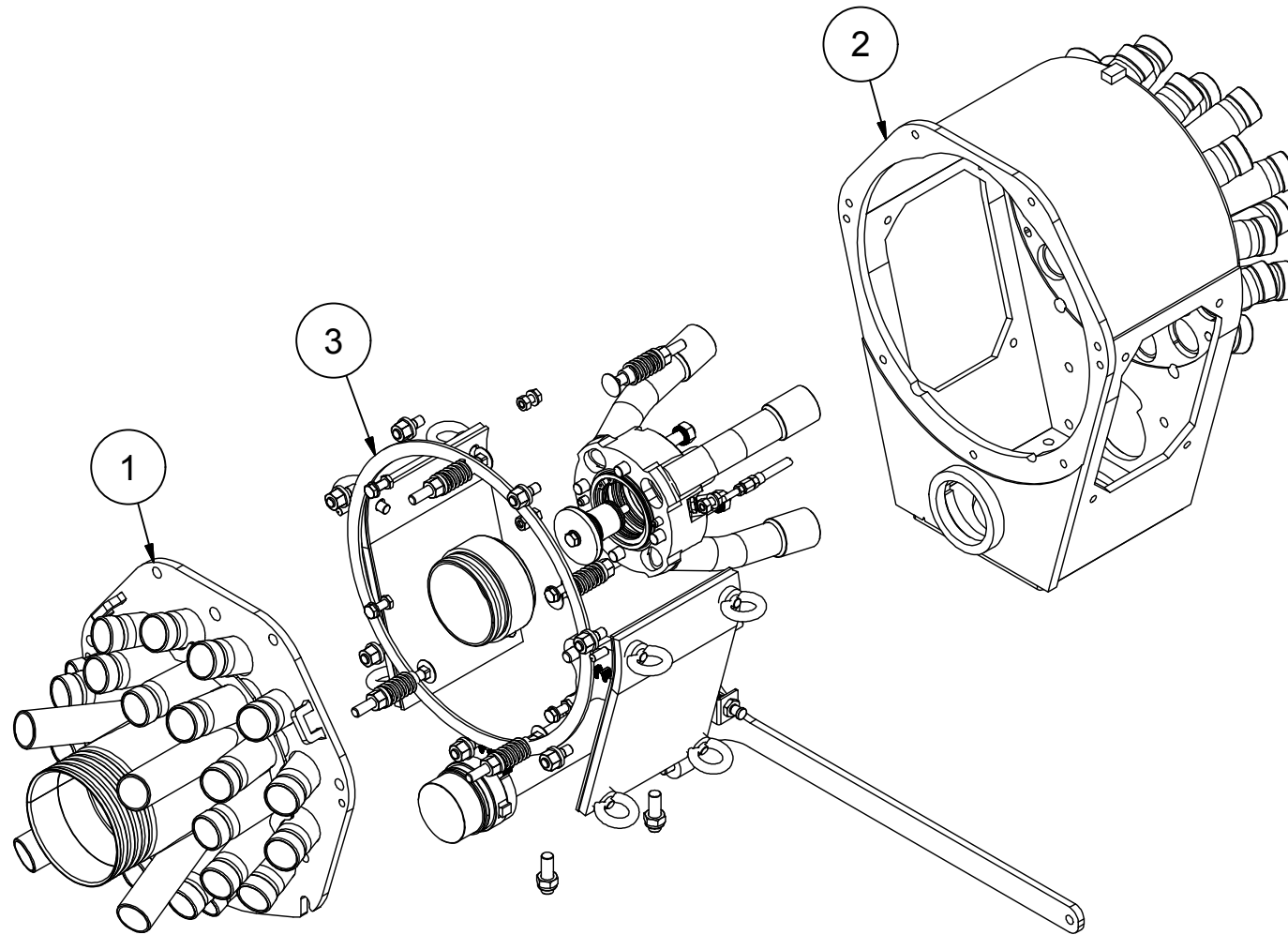


Pos.	Denomination	Quantity	Part	Page
0	ExaCut ECV48 DN40		DPK0000355	4
10	Housing, Parts Kit ECV48-40	1 St	GEC0014	5
10.3000	ExaCut, Installation Parts	1 St	TZL0030	6
10.3000.1000	Drive Adapter Fourfold Ventilation 90°	1 St	TAS0015	7
10.3000.1000.1000	Seal Kit ExaCut Shaft Diameter Ø 32 mm	1 St	DDS0016	8
10.3000.19000	Vario Adjustment Preassembled Bearing Cover, Fixed Bearing	1 St	TEE.005	9
10.3000.22000	Vario Adjustment Preassembled Adjusting Unit	1 St	TEE.008	10
10.3000.28000	Vario Adjustment Preassembled Bearing Cover, Floating	1 St	TEE.004	11
10.3000.31000	Vario Adjustment Preassembled Tensioning Assembly	6 St	TEE.006	12
20	Cutting Ring ECV48-40	2 St	TFL.917	
30	Vario Adjustment EC Spacer Ring	1 St	TFM.033	
40	Vario Adjustment EC Spacer Ring	1 St	TFM.034	
50	ExaCut Rotor DN 125	1 St	GER0004	13
50.1000	ExaCut Rotor DN 125	1 St	GER0016	14
60	Hydraulic Motor Painted 160 cm ³ /U, 32,0 mm	1 St	AOM.015.TF	
70	Eccentric Adjuster ECL/ECV 75%	4 St	TEV.005.N1.T1	15
70.2000	Torsion Spring Set Double Torsion Spring with Torsion	1 St	NFE0085	16
80	Label Turn off Drive	2 St	VAU.013.00	
90	Label Caution: Risk of Hand Injuries 100 mm x 113 mm	2 St	VAU.014	
100	Label Operating Instructions	1 St	VAU.133	
110	Label Vogelsang Logo	2 St	VAU0046	
120	Name Plate 50 x 60 General	1 St	VAU0001	



A	
DKJXX	
© Hugo Vogelsang Maschinenbau GmbH.	





Partlist			
pos.	quantit	part	description
2	1	TEG0021	Housing, Machined ECV48-40
1	1	TDE0026	Housing Cover, Machined ECV48-40
3	1	TZL0030	ExaCut, Installation Parts

Housing, Parts Kit
ECV48-40

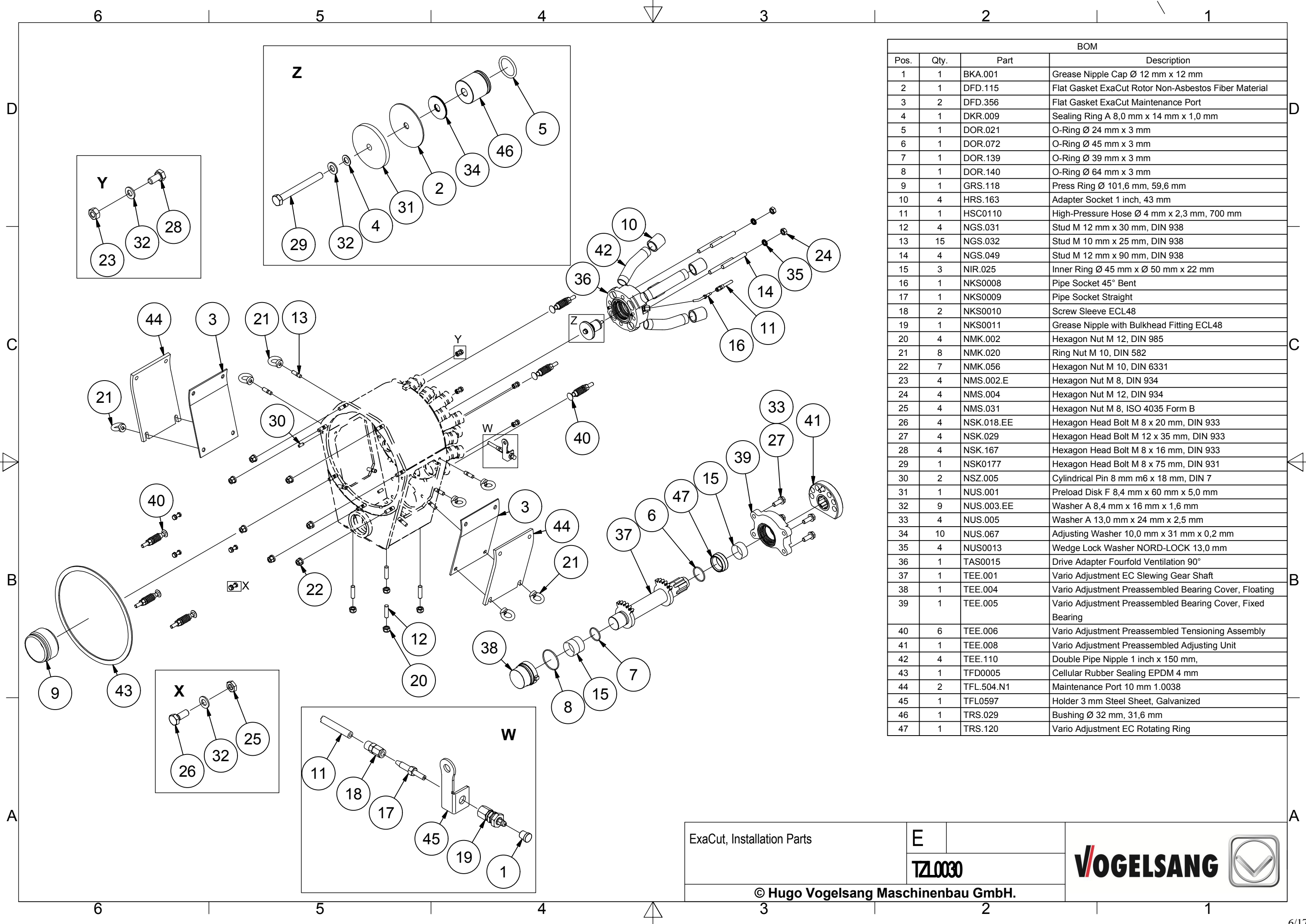
B

GEC0014

VOGELSANG

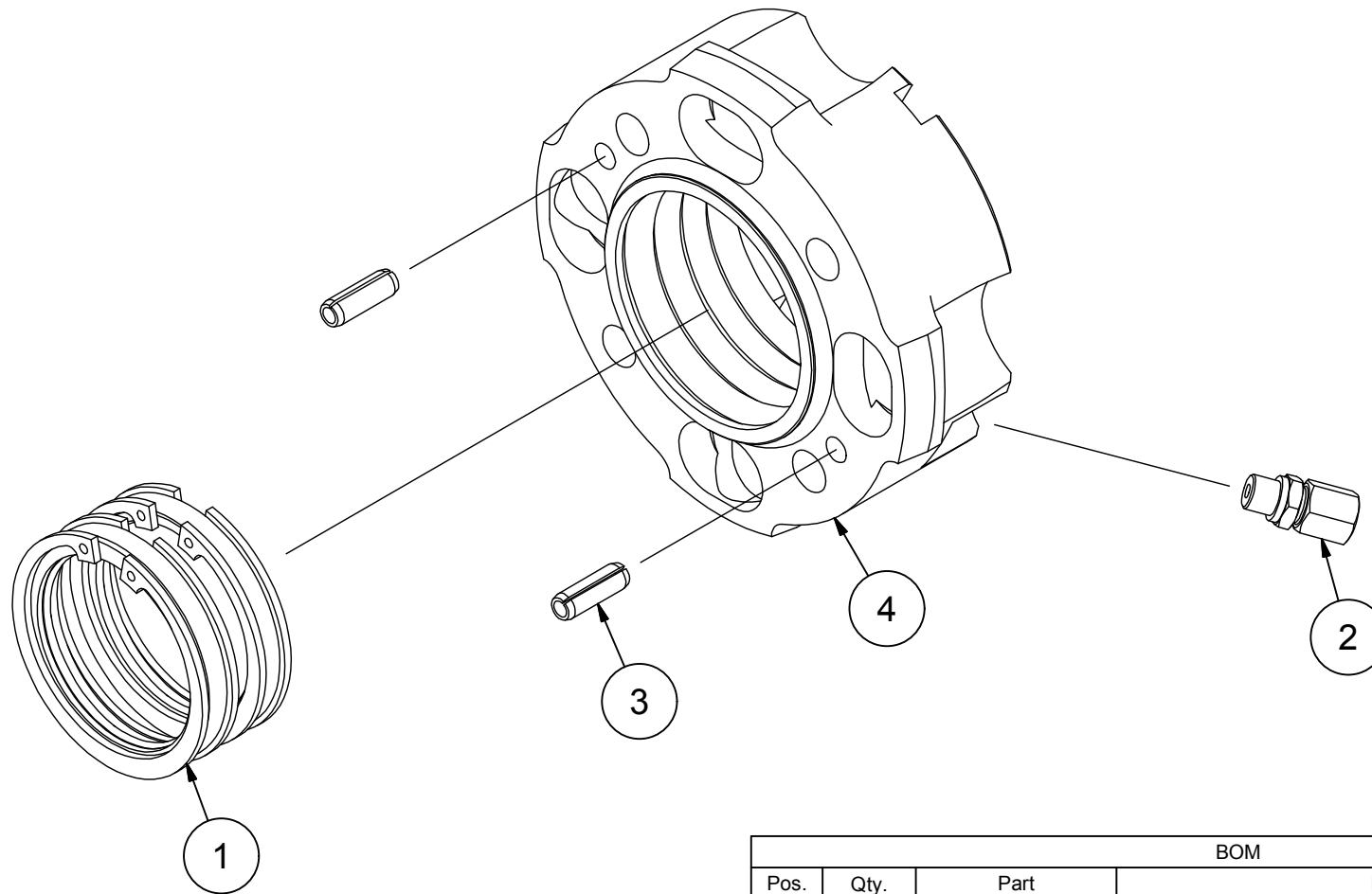


© Hugo Vogelsang Maschinenbau GmbH.



BOM			
Pos.	Qty.	Part	Description
1	1	BKA.001	Grease Nipple Cap Ø 12 mm x 12 mm
2	1	DFD.115	Flat Gasket ExaCut Rotor Non-Asbestos Fiber Material
3	2	DFD.356	Flat Gasket ExaCut Maintenance Port
4	1	DKR.009	Sealing Ring A 8,0 mm x 14 mm x 1,0 mm
5	1	DOR.021	O-Ring Ø 24 mm x 3 mm
6	1	DOR.072	O-Ring Ø 45 mm x 3 mm
7	1	DOR.139	O-Ring Ø 39 mm x 3 mm
8	1	DOR.140	O-Ring Ø 64 mm x 3 mm
9	1	GRS.118	Press Ring Ø 101,6 mm, 59,6 mm
10	4	HRS.163	Adapter Socket 1 inch, 43 mm
11	1	HSC0110	High-Pressure Hose Ø 4 mm x 2,3 mm, 700 mm
12	4	NGS.031	Stud M 12 mm x 30 mm, DIN 938
13	15	NGS.032	Stud M 10 mm x 25 mm, DIN 938
14	4	NGS.049	Stud M 12 mm x 90 mm, DIN 938
15	3	NIR.025	Inner Ring Ø 45 mm x Ø 50 mm x 22 mm
16	1	NKS0008	Pipe Socket 45° Bent
17	1	NKS0009	Pipe Socket Straight
18	2	NKS0010	Screw Sleeve ECL48
19	1	NKS0011	Grease Nipple with Bulkhead Fitting ECL48
20	4	NMK.002	Hexagon Nut M 12, DIN 985
21	8	NMK.020	Ring Nut M 10, DIN 582
22	7	NMK.056	Hexagon Nut M 10, DIN 6331
23	4	NMS.002.E	Hexagon Nut M 8, DIN 934
24	4	NMS.004	Hexagon Nut M 12, DIN 934
25	4	NMS.031	Hexagon Nut M 8, ISO 4035 Form B
26	4	NSK.018.EE	Hexagon Head Bolt M 8 x 20 mm, DIN 933
27	4	NSK.029	Hexagon Head Bolt M 12 x 35 mm, DIN 933
28	4	NSK.167	Hexagon Head Bolt M 8 x 16 mm, DIN 933
29	1	NSK0177	Hexagon Head Bolt M 8 x 75 mm, DIN 931
30	2	NSZ.005	Cylindrical Pin 8 mm m6 x 18 mm, DIN 7
31	1	NUS.001	Preload Disk F 8,4 mm x 60 mm x 5,0 mm
32	9	NUS.003.EE	Washer A 8,4 mm x 16 mm x 1,6 mm
33	4	NUS.005	Washer A 13,0 mm x 24 mm x 2,5 mm
34	10	NUS.067	Adjusting Washer 10,0 mm x 31 mm x 0,2 mm
35	4	NUS0013	Wedge Lock Washer NORD-LOCK 13,0 mm
36	1	TAS0015	Drive Adapter Fourfold Ventilation 90°
37	1	TEE.001	Vario Adjustment EC Slewing Gear Shaft
38	1	TEE.004	Vario Adjustment Preassembled Bearing Cover, Floating
39	1	TEE.005	Vario Adjustment Preassembled Bearing Cover, Fixed Bearing
40	6	TEE.006	Vario Adjustment Preassembled Tensioning Assembly
41	1	TEE.008	Vario Adjustment Preassembled Adjusting Unit
42	4	TEE.110	Double Pipe Nipple 1 inch x 150 mm,
43	1	TFD0005	Cellular Rubber Sealing EPDM 4 mm
44	2	TFL.504.N1	Maintenance Port 10 mm 1.0038
45	1	TFL0597	Holder 3 mm Steel Sheet, Galvanized
46	1	TRS.029	Bushing Ø 32 mm, 31,6 mm
47	1	TRS.120	Vario Adjustment EC Rotating Ring

ExaCut, Installation Parts	E	
	TZL0030	
© Hugo Vogelsang Maschinenbau GmbH.		



BOM			
Pos.	Qty.	Part	Description
1	1	DDS0016	Seal Kit ExaCut Shaft Diameter Ø 32 mm
2	1	NGE.094	Screw-In Fitting Straight 6 L - M 10 x 1
3	2	NSP.025	Spring Pin 8 mm x 24 mm, ISO 8752
4	1	PRS0727	Drive Adapter Ø 149 mm, 56 mm

Drive Adapter
Fourfold Ventilation 90°

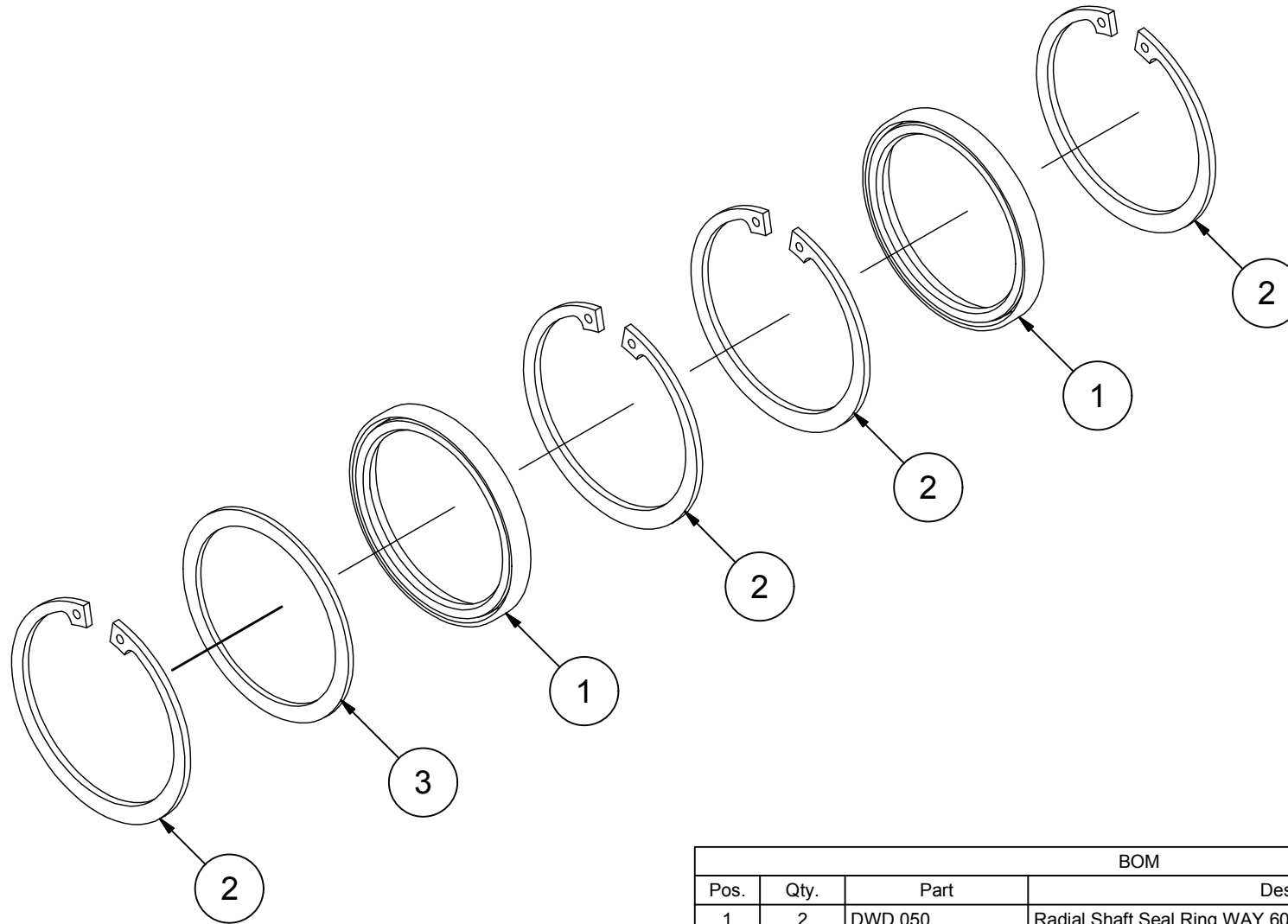
B

TAS0015

VOGELSANG



© Hugo Vogelsang Maschinenbau GmbH.



BOM			
Pos.	Qty.	Part	Description
1	2	DWD.050	Radial Shaft Seal Ring WAY 60 mm x 72 mm x 7 mm
2	4	NSR.025	Retaining Ring Ø 72 mm x 2,5 mm
3	1	NUS.060	Washer 60,0 mm x 71,8 mm x 2,0 mm

Seal Kit ExaCut
Shaft Diameter Ø 32 mm

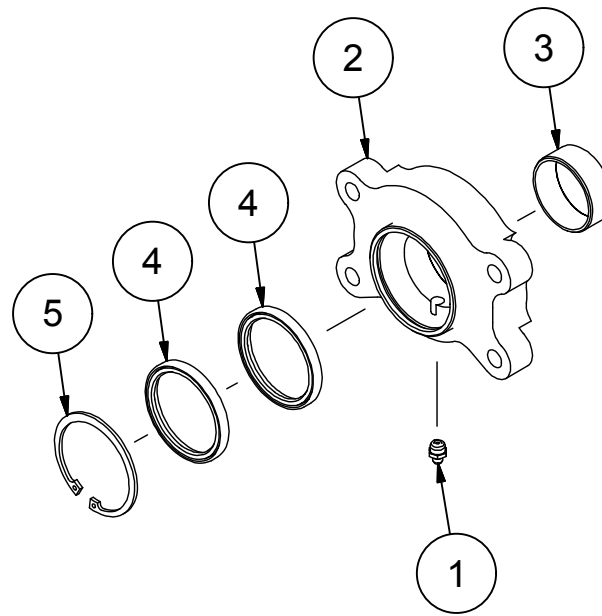
A

DDS0016

VOGELSANG



© Hugo Vogelsang Maschinenbau GmbH.



BOM			
Pos.	Qty.	Part	Description
1	1	NKS.001	Grease Nipple H1 M 10 x 1 mm
2	1	TRS.037	Vario Adjustment EC Bearing Cover, Fixed Bearing
3	1	NLG.041	Plain Bearing Cylindrical 50 mm x 55 mm x 20 mm
4	2	DWD.050	Radial Shaft Seal Ring WAY 60 mm x 72 mm x 7 mm
5	1	NSR.025	Retaining Ring Ø 72 mm x 2,5 mm

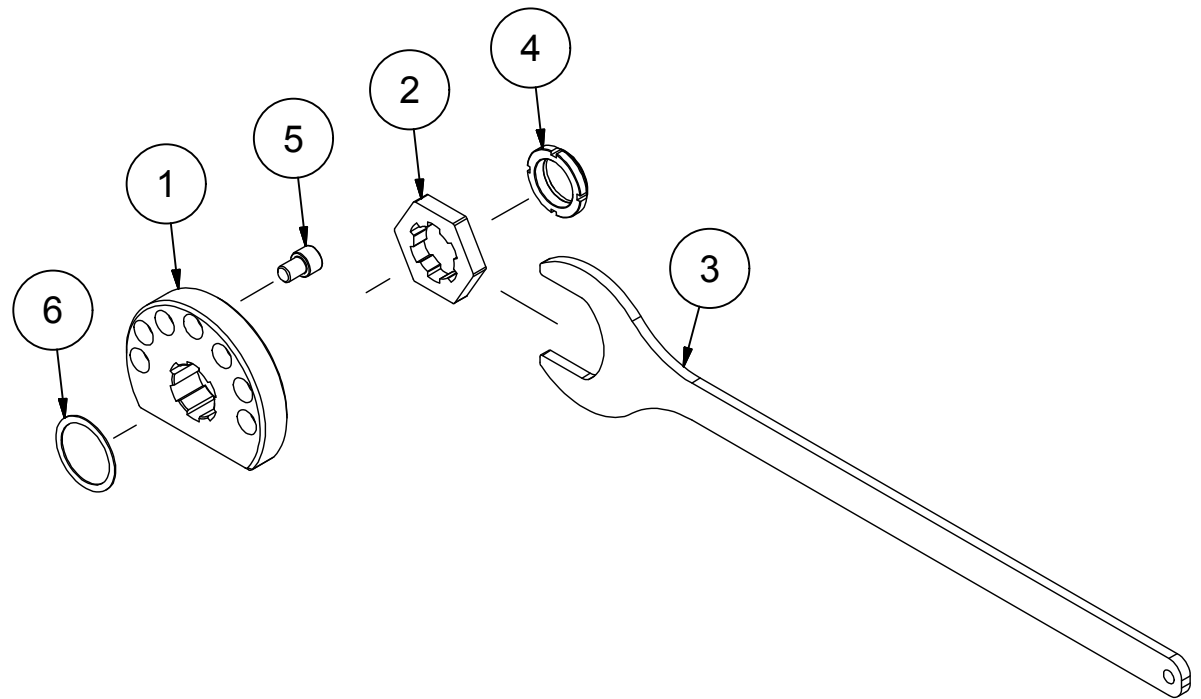
Vario Adjustment Preassembled
Bearing Cover, Fixed Bearing

A

TEE005

VOGELSANG





BOM			
Pos.	Qty.	Part	Description
1	1	TFL.925	Vario Adjustment EC Adjusting Plate
2	1	TFL.926	Laser-Cut Part Material Thickness 12 mm
3	1	GMS.003	Open-End Wrench SW65
4	1	NMN.006	Slotted Nut M 35 x 1,5 mm, GUK
5	1	NSI.014	Cylinder Head Bolt M 12 x 16 mm, ISO 4762
6	1	NUS.057	Adjusting Washer 45,0 mm x 55 mm x 1,0 mm

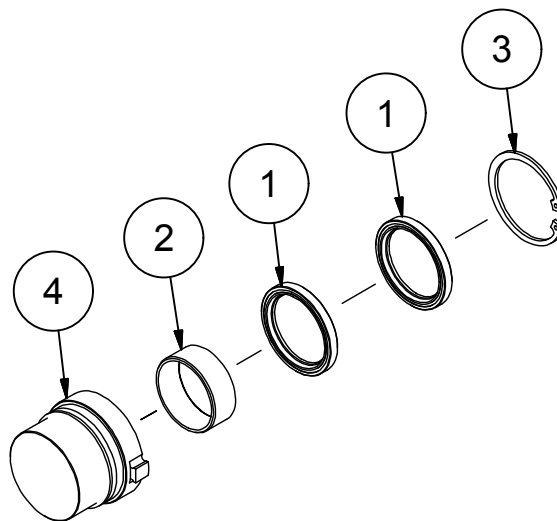
Vario Adjustment Preassembled
Adjusting Unit

A

TEE008

VOGELSANG





BOM			
Pos.	Qty.	Part	Description
1	2	DWD.054	Radial Shaft Seal Ring WAY 50 mm x 65 mm x 7 mm
2	1	NLG.041	Plain Bearing Cylindrical 50 mm x 55 mm x 20 mm
3	1	NSR.015	Retaining Ring Ø 65 mm x 2,5 mm
4	1	TRS.034	Vario Adjustment EC Bearing Cover, Floating Bearing Mated

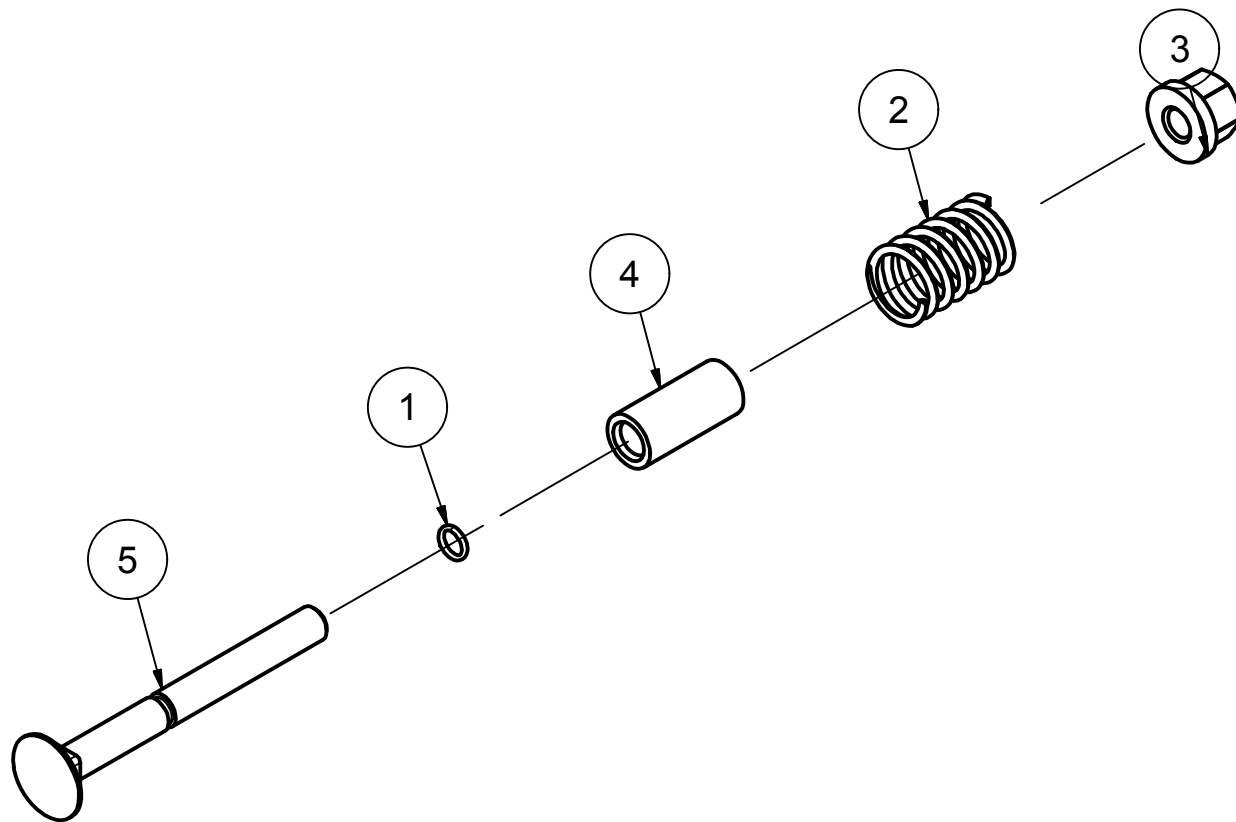
Vario Adjustment Preassembled
Bearing Cover, Floating

A

TEE004

VOGELSANG





BOM			
Pos.	Qty.	Part	Description
1	1	DOR.128	O-Ring Ø 7,5 mm x 1,5 mm
2	1	NFE.016	Compression Spring 2,5 mm x 20 mm x 54 mm
3	1	NMK.018.EE	Hexagon Nut M 10, DIN 6331
4	1	TRS.111	Receptacle Ø 16 mm, 35 mm
5	1	TRS.112	Mushroom Head Bolt M 10 x 100 mm,

Vario Adjustment Preassembled
Tensioning Assembly

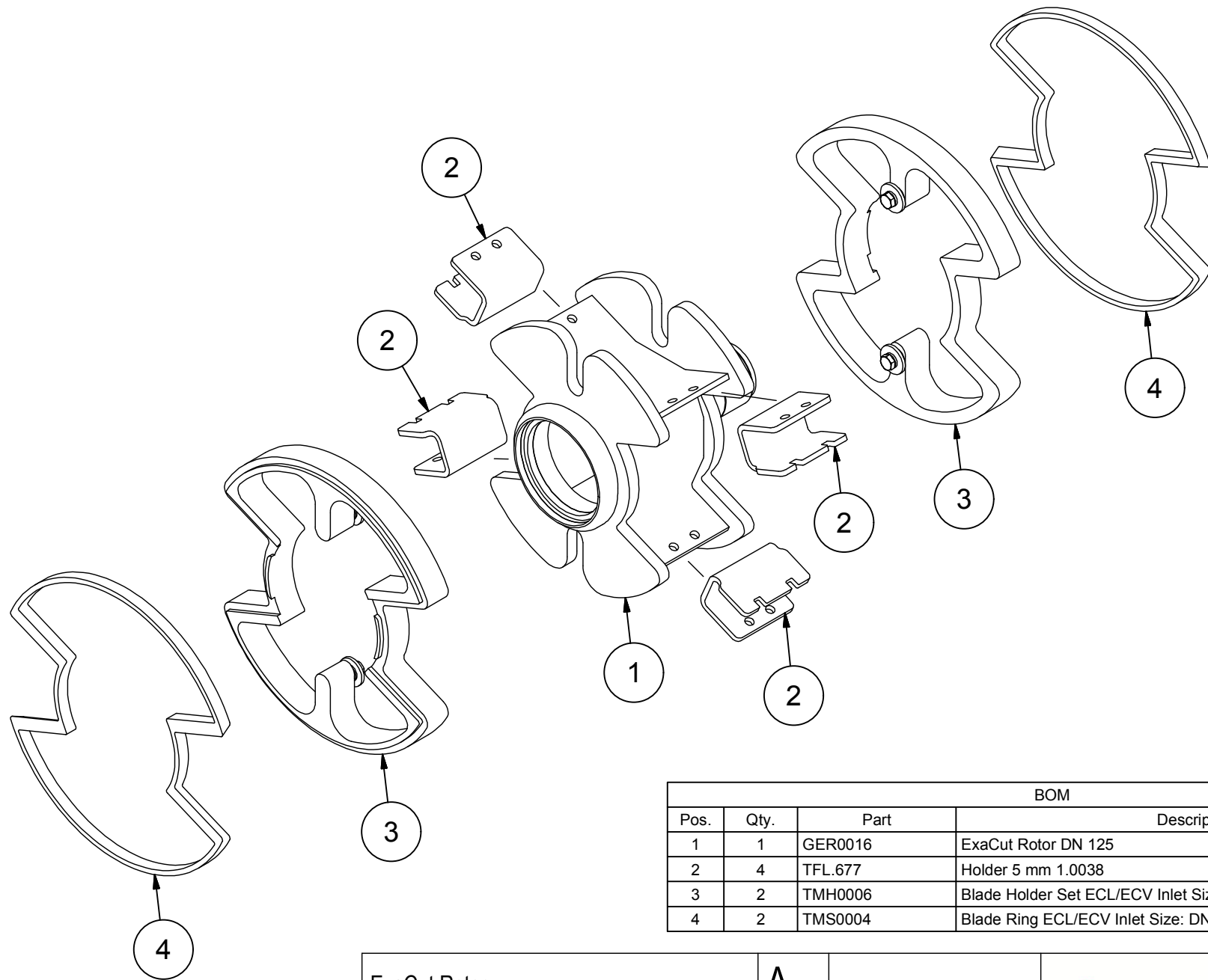
B

TEE006

© Hugo Vogelsang Maschinenbau GmbH.

VOGELSANG





BOM			
Pos.	Qty.	Part	Description
1	1	GER0016	ExaCut Rotor DN 125
2	4	TFL.677	Holder 5 mm 1.0038
3	2	TMH0006	Blade Holder Set ECL/ECV Inlet Size: DN 125
4	2	TMS0004	Blade Ring ECL/ECV Inlet Size: DN 125

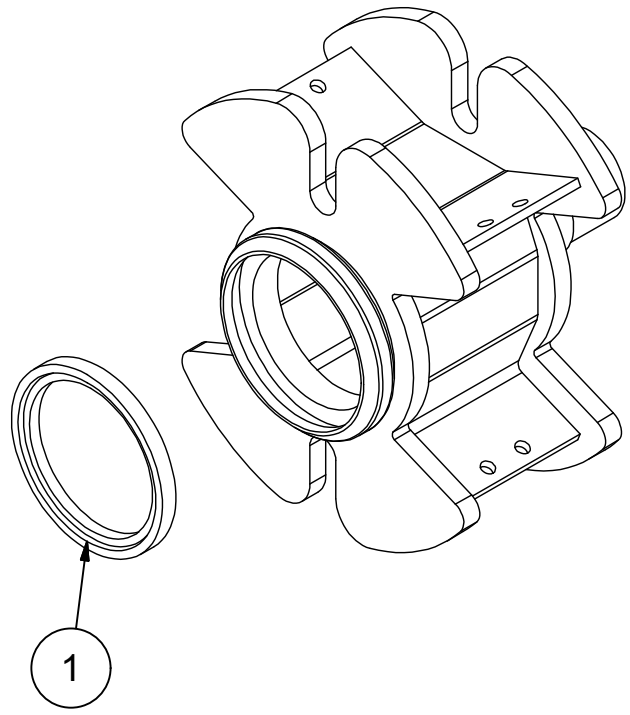
ExaCut Rotor
DN 125

A

GER0004

VOGELSANG





BOM			
Pos.	Qty.	Part	Description
1	1	DFD.116	Sealing Ring ECL/ ECV MH24-45 Lubricated under Vacuum

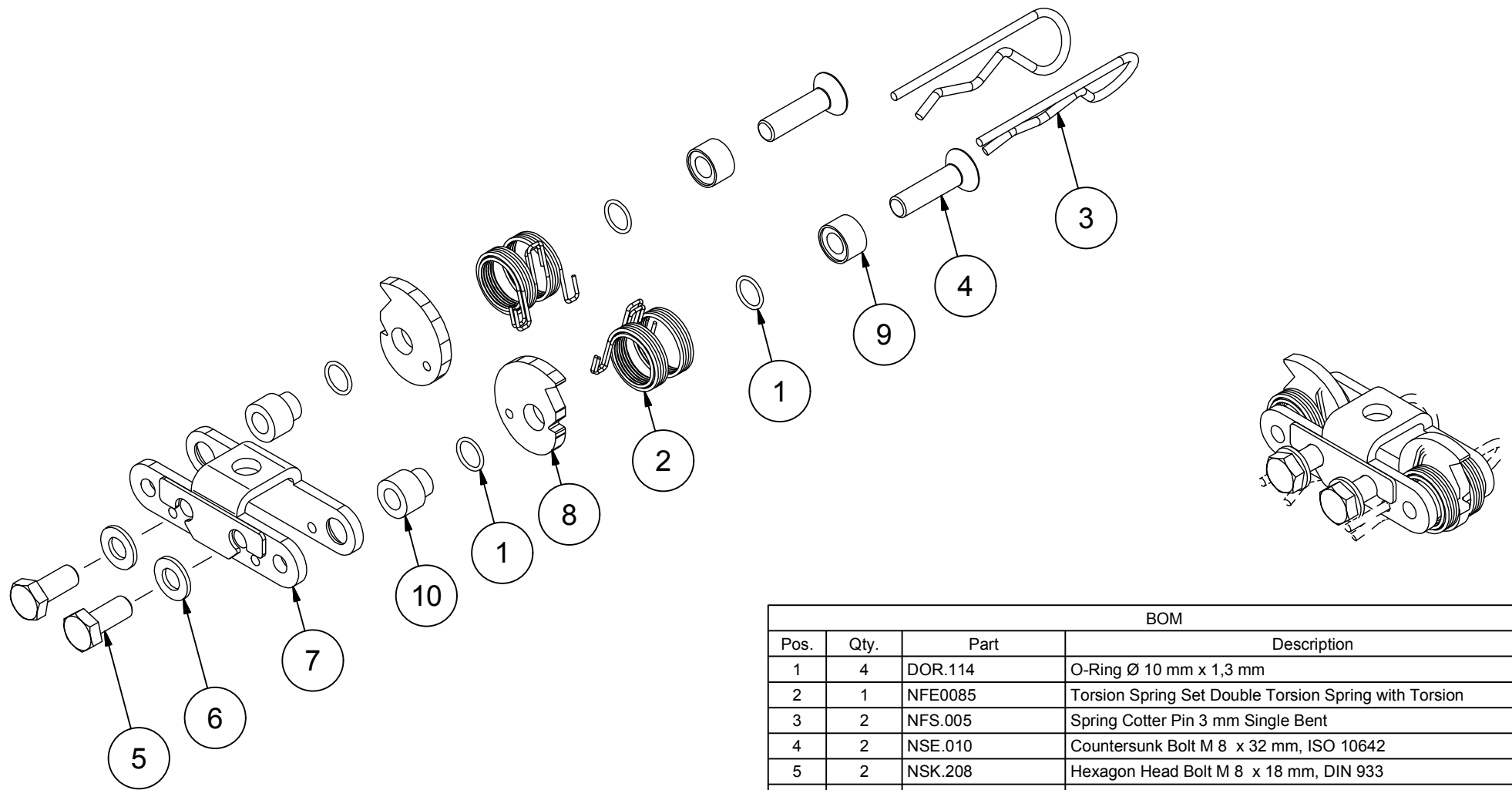
Sealing Ring ECL/ ECV MH24-45
Lubricated under Vacuum

A

GER0016

© Hugo Vogelsang Maschinenbau GmbH.

VOGELSANG



BOM			
Pos.	Qty.	Part	Description
1	4	DOR.114	O-Ring Ø 10 mm x 1,3 mm
2	1	NFE0085	Torsion Spring Set Double Torsion Spring with Torsion
3	2	NFS.005	Spring Cotter Pin 3 mm Single Bent
4	2	NSE.010	Countersunk Bolt M 8 x 32 mm, ISO 10642
5	2	NSK.208	Hexagon Head Bolt M 8 x 18 mm, DIN 933
6	2	NUS.003.E	Washer A 8,4 mm x 16 mm x 1,6 mm
7	1	TEA.012	Support Bracket 1.4301
8	2	TFL.566.N2	Eccentric for Adjuster 4,75 mm 1.4034
9	2	TRS.025.N1	Turned Part, Raw Part Ø 14,4 mm x 8,9 mm
10	2	TRS.026.N1	Turned Part, Raw Part Ø 14,4 mm x 15,1 mm

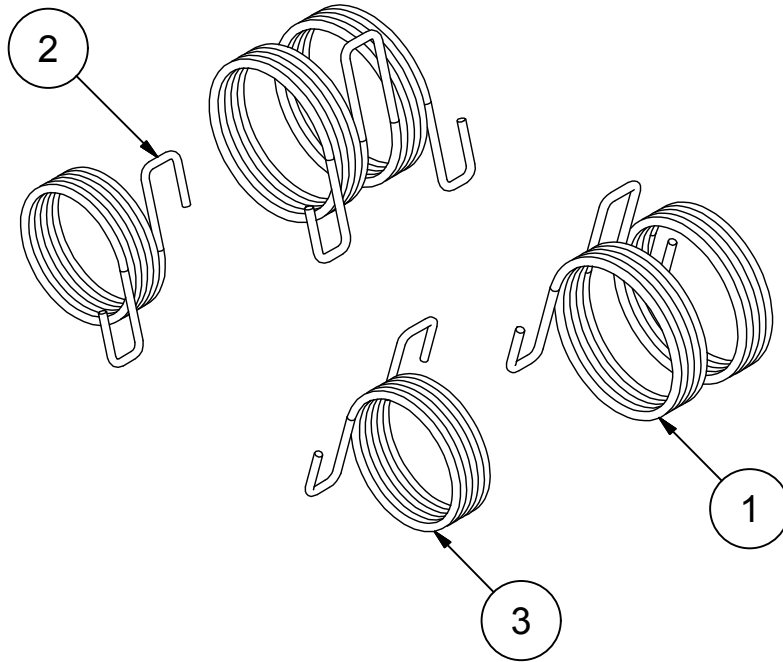
Eccentric Adjuster ECL/ECV
75%

C

TEV.005.N1.T1

VOGELSANG





BOM			
Pos.	Qty.	Part	Description
1	2	NFE.042	Double Torsion Spring 1,2 mm x 21,5 mm
2	1	NFE.040	Torsion Spring 1,1 mm x 18,4 mm
3	1	NFE.041	Torsion Spring 1,1 mm x 18,4 mm

Torsion Spring Set Double
Torsion Spring with Torsion

A

NFE0085

VOGELSANG



© Hugo Vogelsang Maschinenbau GmbH.

**Vogelsang GmbH & Co. KG**

Holthöge 10-14, 49632 Essen/Oldb., GERMANY

Phone: +49 (0) 5434 83 83 83
+49 (0) 5434 83 99 99

Fax: +49 (0) 5434 83 10

service@vogelsang.info

www.vogelsang.info

Vogelsang Lutherstadt Eisleben

Gewerbegebiet Rothenschirmbach Nr. 8, 06295 Lutherstadt Eisleben, GERMANY

Phone: +49 (0) 34776 91 92 14

Fax: +49 (0) 34776 91 92 60

ENGINEERED TO WORK**Australia****Vogelsang Pty. Ltd.**

vogelsang.com.au

Denmark**Vogelsang A/S**

vogelsang-as.dk

Italy**Vogelsang Italy Srl**

vogelsang-srl.it

Russia**Vogelsang Russland**

vogelsang.ru

USA**Vogelsang USA Ltd.**

vogelsangusa.com

Austria**Vogelsang Austria GmbH**

vogelsang-austria.at

Finland**Vogelsang Oy**

vogelsang.fi

Malaysia**Vogelsang Malaysia**

vogelsang.info

South Korea**Vogelsang Korea Co., Ltd.**

vogelsang.co.kr

Brasil**Vogelsang Brasil Ltda.**

vogelsang.com.br

France**Vogelsang France S.A.R.L.**

vogelsang.fr

Mexico**Vogelsang De México****S.de R.L. de CV**

vogelsang.mx

Spain**Vogelsang S.L.**

vogelsang.es

China**Vogelsang Mechanical
Engineering (Shanghai) Co., Ltd.**

vogelsang.com.cn

India**Vogelsang India Private Limited**

vogelsangindia.com

Poland**Vogelsang Poland Sp. z o.o.**

vogelsang.pl

Sweden**Vogelsang Sverige AB**

vogelsang.se

Czech Republic**Vogelsang CZ s.r.o.**

vogelsang-czech.cz

Ireland**Vogelsang Irland**

vogelsang.ie

Romania**Vogelsang Romania SRL**

vogelsang.ro

United Kingdom**Vogelsang Ltd.**

vogelsang.co.uk

We reserve the right to make technical modifications to the diagrams and information presented in this document in the event that such modifications become necessary for the enhancement of the machine.