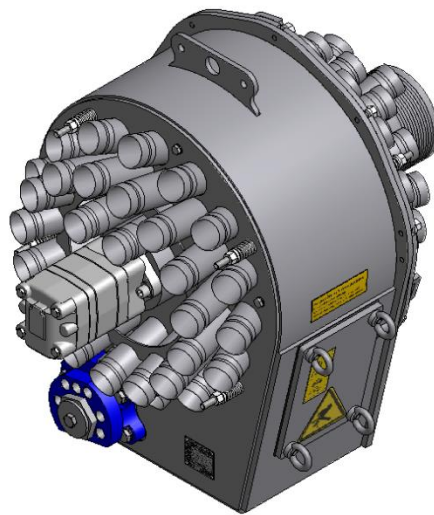




# Spare parts list

**ExaCut**  
**ECV60-50**

ENGINEERED TO WORK



### **Issuer**

Hugo Vogelsang Maschinenbau GmbH  
Holthöge 10-14  
49632 Essen/Oldb.

Phone: +49 54 34 83 0  
Fax: +49 54 34 83 10

vogelsang-gmbh.com  
info@vogelsang-gmbh.com

In the absence of express, written authorisation from the issuer, the reproduction or partial reproduction of this document in any form is prohibited.

We reserve the right to make technical modifications to the diagrams and information presented in this document in the event that such modifications become necessary for the enhancement of the machine.

© 2013 Hugo Vogelsang Maschinenbau GmbH

### **Registered trademarks of Vogelsang**

Vogelsang, Vogelsang Logo, RotaCut, HiFlo, ACC, CFC, BioCrack, XTill and EnergyJet are registered trademarks of Hugo Vogelsang Maschinenbau GmbH.

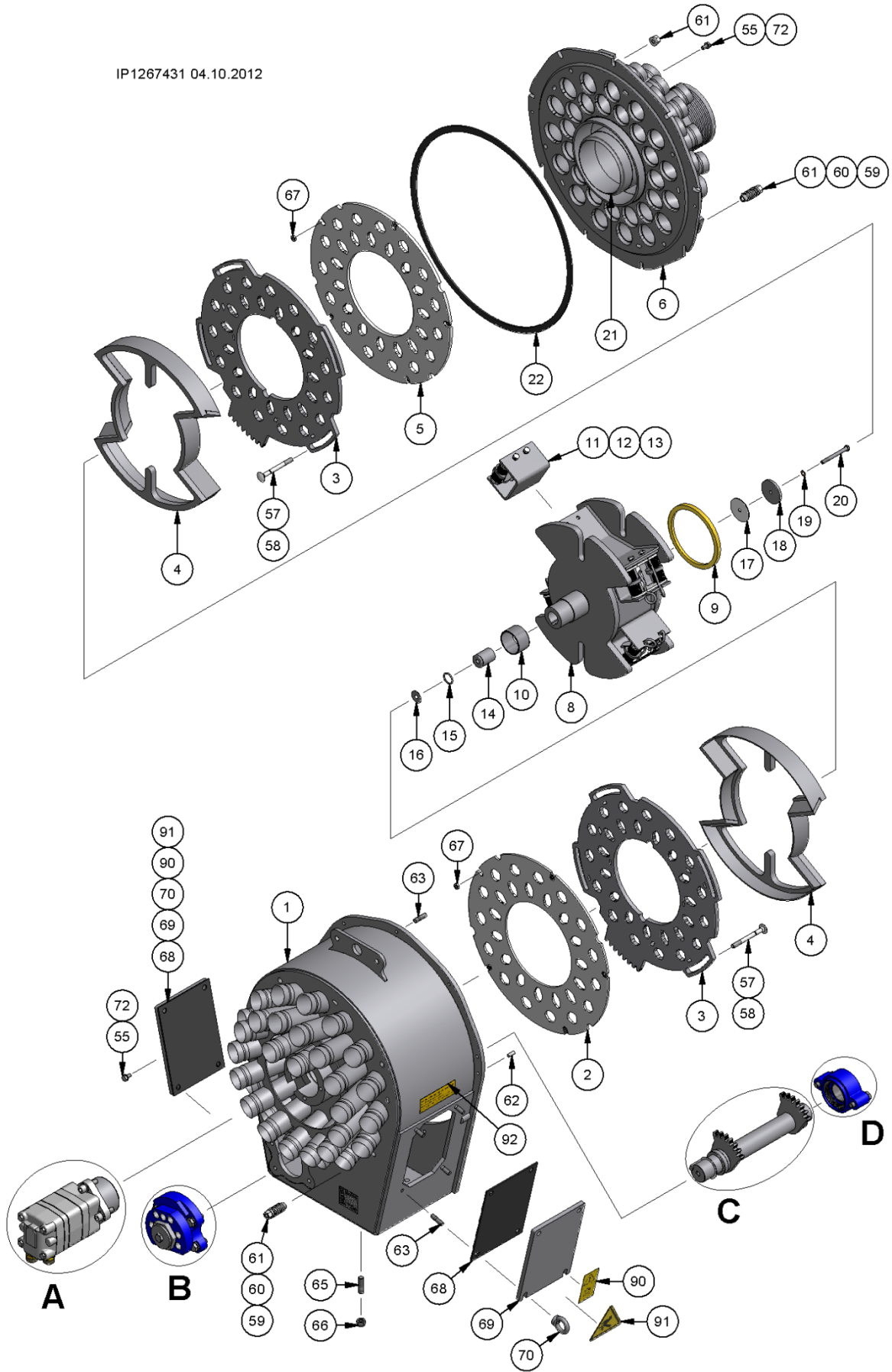
The registered trademarks are not always designated with a ® symbol in this document.

**Contents**

**Exploded view** .....4  
**Housing, Cutting ring, Cutting knife**.....5  
Position 1-7 .....5  
**Rotor** .....5  
Pos. 8-20.....5  
**Accessories** .....5  
Position 21-22 .....5  
**Detail A** .....6  
**Adapter for hydraulic motor**.....6  
Position 23-30 .....6  
**Hydraulic motor**.....6  
Position 31-32 .....6  
**Detail B** .....7  
**Bearing cover, fixed bearing**.....7  
Position 33-40 .....7  
**Adjusting plate + accessories**.....7  
Position 41-47 .....7  
**Detail C** .....8  
**Slew drive unit**.....8  
Position 48-53 .....8  
**Tensioning assembly**.....8  
Positions 57-61 .....8  
**Accessories** .....8  
Positions 62-67 .....8  
**Maintenance port** .....8  
Pos. 68-70.....8  
**Accessories** .....9  
Position 71-79 .....9  
**Detail D** .....9  
**Bearing cover, floating bearing** .....9  
Position 80-87 .....9  
**Safety sticker** .....9  
Position 90-92 .....9

Exploded view

IP1267431 04.10.2012



### Housing, Cutting ring, Cutting knife

#### Position 1-7

Pos.	Part number	Description	Dimension	Notes	Qty
1	TFG.100.T2	Housing			1
2	TFM.132	Intermediate ring		Plastic 5 mm	1
3	TFM.141	Cutting ring			2
4	TMH.803	Cutting knife			2
5	TFM.131	Intermediate ring		Plastic 8 mm	1
6	TDF.100.T2	Housing cover			1

### Rotor

#### Pos. 8-20

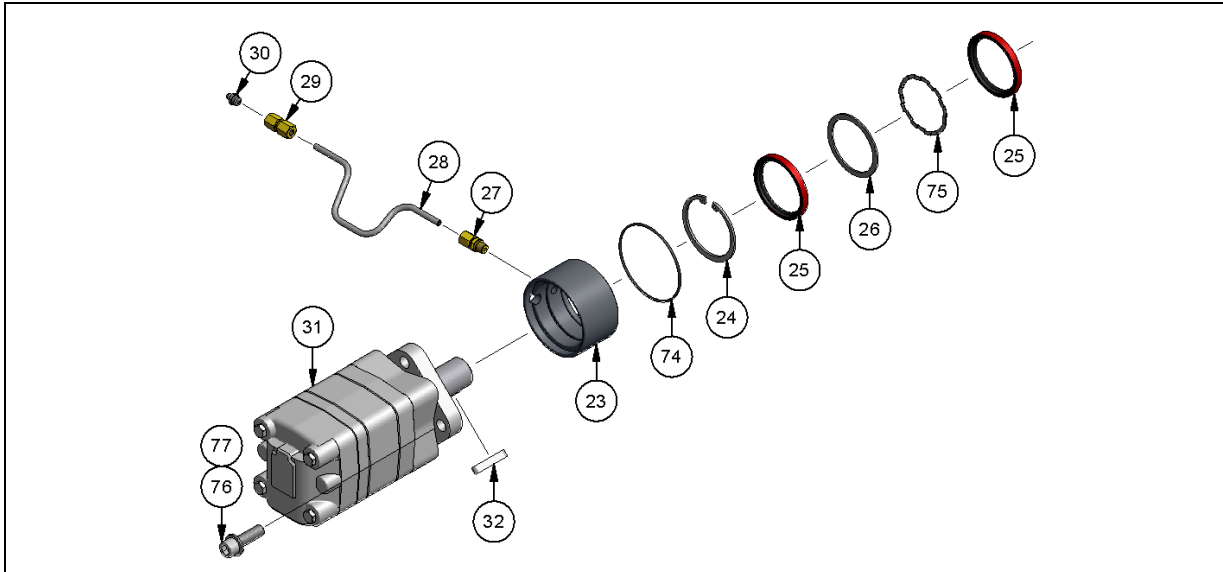
Pos.	Part number	Description	Dimension	Notes	Qty
8	TRO.805	Rotor			1
9	DFD.372	Ring gasket, foam PU	MH24-30	Grease impregnated	1
10	NIR.023	Inner ring	JR 55 x 60 x 35	Nitride	1
11	TFL.851	Channel for eccentric adjuster			4
12	TEV.007	Eccentric adjuster			4
13	NSK.167	Hex head screw	M 8 x 16	Included in TEV.007	8
14	TRS.030	Bushing for rotor			1
15	DOR.021	O-ring	24 x 3	NBR 70	1
16	NUS.067	Shim	10 x 31 x 0,2	DIN 522A	2
17	DFD.115	Gasket ABIL	60 x 8 x 1.5		1
18	NUS.001	Washer	ø8.5 x ø60 x 6		1
19	DKR.009	Copper ring	A 14 x 8 x 1		1
20	NSK.062	Hexagon head screw	M 8 x 80; 8.8	DIN 931	1

### Accessories

#### Position 21-22

Pos.	Part number	Description	Dimension	Notes	Qty
21	GRS0048	Press ring			1
22	TFD.021	Gasket	15 x 4		1,7 m

Detail A



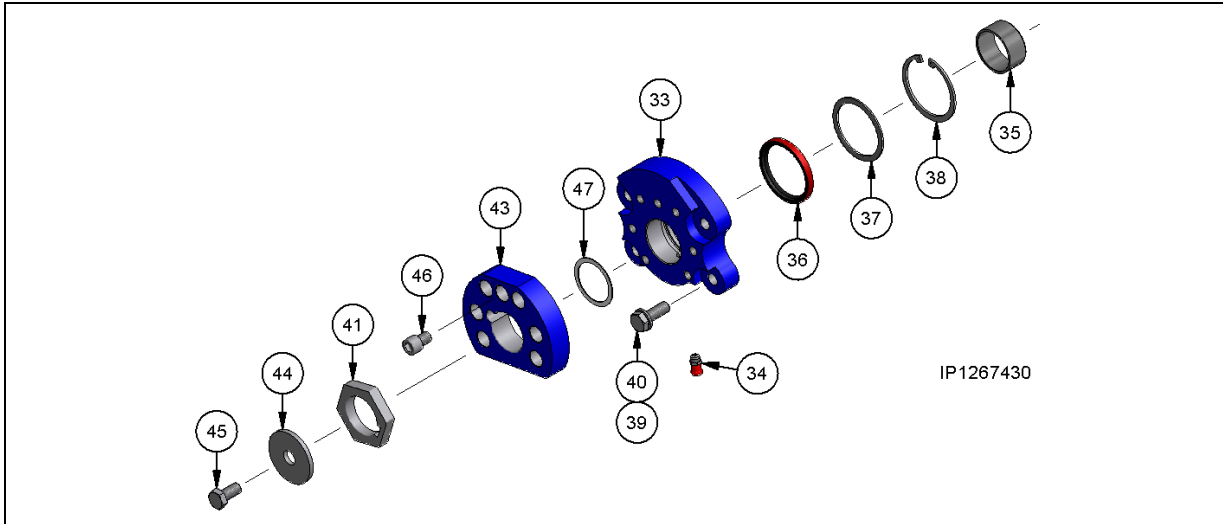
**Adapter for hydraulic motor**  
Position 23-30

Pos.	Part number	Description	Dimension	Notes	Qty
23	GRS0047	Adapter for hydraulic motor			1
24	NSR.025	Retaining ring	72 x 2,5	DIN 472	1
25	DWD.050	Radial shaft seal ring	60 x 72 x 7	NBR 70	2
26	NUS.060	Washer	71.8 x 65 x 2	DIN 6930	1
27	NGE.094	Screw connection	AL6 M10 x 1		1
28	NKS0001	Lubricating pipe			1
29	NGE.093	Screw connection	GAIL6 M10 x 1		1
30	NKS.001	Grease nipple	M10 x 1	DIN71412-A	1
	BKA.001	Grease nipple cap			1

**Hydraulic motor**  
Position 31-32

Pos.	Part number	Description	Dimension	Notes	Qty
31	AOM.018	Hydraulic motor	OMS 250 M	Shaft $\varnothing$ 32	1
	DDS.003	Sealing set for hydraulic motor	A 10 x 8 x 45	Included in Pos. 31	(1)
32	NPF.053	Fitting key	A 10 x 8 x 45	Included in Pos. 31	(1)

**Detail B**



**Bearing cover, fixed bearing**

**Position 33-40**

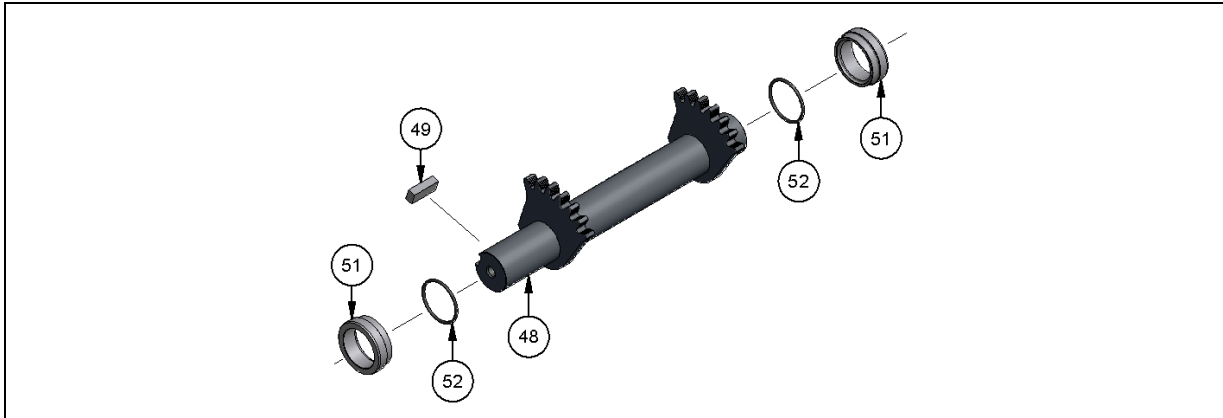
Pos.	Part number	Description	Dimension	Notes	Qty
33	TRS.321	Shaft bearing		Drive side	1
34	NKS.001	Grease nipple	M 10 x 1	DIN 71412-A	1
	BKA.001	Grease nipple cap			1
35	NLG0007	Slide bearing			1
36	DWD.050	Radial shaft seal ring	60 x 72 x 7	NBR 70	2
37	NUS.060	Washer	71.8 x 65 x 2	DIN 6930	1
38	NSR.025	Retaining ring	72 x 2.5	DIN 472	1
39	NUS.005	Washer	A 13 x 24 x 2.5	DIN 125	4
40	NSK.029	Hexagon head screw	M 12 x 35	DIN 933	4

**Adjusting plate + accessories**

**Position 41-47**

Pos.	Part number	Description	Dimension	Notes	Qty
41	TFL.927	Nut		Width A/F 65	1
43	TFL.929	Adjusting plate			1
44	NUS.090	Washer	16.5 x 60 x 5	DIN 522	1
45	NSK.042	Hexagon head screw	M 12 x 25	DIN 933	1
46	NSI.014	Hexagon socket head cap screw	M 12 x 16	ISO 4762	1
47	NUS.057	Shim	45 x 55 x 1	DIN 988	1

**Detail C**



**Slew drive unit  
Position 48-53**

Pos.	Part number	Description	Dimension	Notes	Qty
48	TRS.101	Slew shaft			1
49	NPF.022	Fitting key	B 14 x 9 x 35	DIN 6885	1
51	TRS.107	Rotating ring			2
52	DOR.072	O-ring	45 x 3	NBR 70	2
55	NSK.167	Hexagon head screw	M 8 x 16	DIN 933	10

**Tensioning assembly  
Positions 57-61**

Pos.	Part number	Description	Dimension	Notes	Qty
	TEE.006	Tensioning assembly ExaCut Vario		One assembly included Pos. 57-61 ever one time	8
57	TRS.112	Tensioning screw	M10 x 100	DIN 603	(8 x 1)
58	DOR.128	O-ring	7.5 x 1.5	NBR	(8 x 1)
59	TRS.111	Housing for tensioning assembly			(8 x 1)
60	NFE.016	Compression spring			(8 x 1)
61	NMK.018.EE	Hex nut	M 10	DIN 6331	(8 x 1)

**Accessories  
Positions 62-67**

Pos.	Part number	Description	Dimension	Notes	Qty
62	NSZ.005	Dowel pin	8 x 18	DIN 7	2
63	NGS.032	Stud	M 10 x 35	DIN 938	17
65	NGS.031	Stud	M 12 x 30; 5.8	DIN 938	4
66	NMK.002	Hexagon nut	M 12	DIN 985	4
67	NMS.031	Hexagon nut	M 8	DIN 439	10

**Maintenance port  
Pos. 68-70**

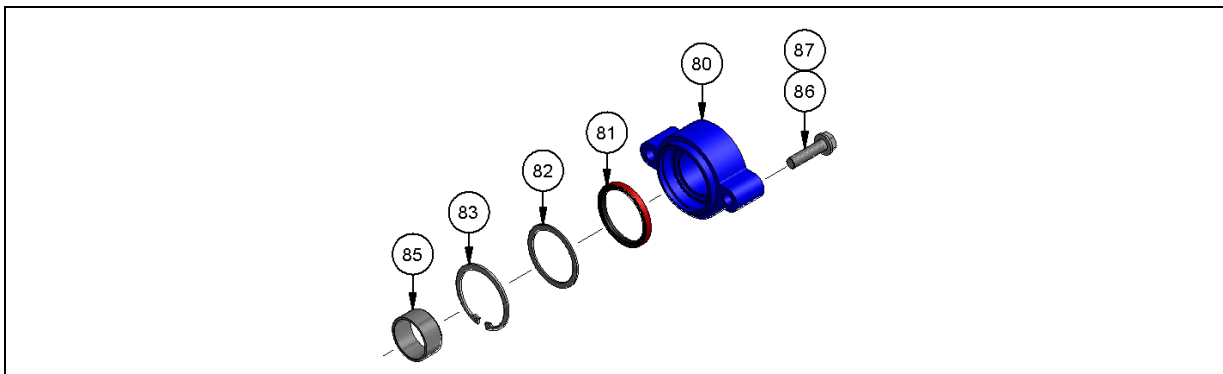
Pos.	Part number	Description	Dimension	Notes	Qty
68	DFD.356	Gasket maintenance port			2
69	TFM.133	Maintenance port			2
70	NMK.020	Eye nut	M 10	DIN 582	8



**Accessories**  
**Position 71-79**

Pos.	Part number	Description	Dimension	Notes	Qty
72	NUS.003	Washer	A 8.4 x 16 x 1.6	DIN 125	10/ 4
74	DOR.044	O-ring	85 x 2.5		1
75	PRS0024	Distance washer	60 x 68 x 2		1
76	NSI.004	Hexagon socket head cap screw	M 12 x 40	ISO 4762	4
77	NUS.005	Washer	13 x 24 x 2.5	DIN 125	4

**Detail D**



**Bearing cover, floating bearing**  
**Position 80-87**

Pos.	Part number	Description	Dimension	Notes	Qty
80	TRS.106	Shaft bearing		Inlet side	1
81	DWD.050	Radial shaft seal ring	60 x 72 x 7	NBR 70	2
82	NUS.060	Washer	71.8 x 65 x 2	DIN 6930	1
83	NSR.025	Retaining ring	72 x 2.5	DIN 472	1
85	NLG0007	Slide bearing			1
86	NSK.047	Hexagon head screw	M 12 x 45	DIN 933	2
87	NUS.005	Washer	A 13 x 24 x 2.5	DIN 125	4

**Safety sticker**  
**Position 90-92**

Pos.	Part number	Description	Dimension	Notes	Qty
90	VAU.133	Sticker			1
91	VAU.014	Sticker			2
92	VAU.013.EN	Sticker			2



**Hugo Vogelsang Maschinenbau GmbH**  
Holthöge 10-14  
49632 Essen/Oldb.

Phone: +49 (0) 54 34 83 0  
Fax: +49 (0) 54 34 83 10

vogelsang-gmbh.com  
info@vogelsang-gmbh.com

ENGINEERED TO WORK

**USA**  
**Vogelsang USA Ltd.**  
vogelsangusa.com

**Spanien**  
**Vogelsang S.L.**  
vogelsang.es

**Schweden**  
**Vogelsang Sverige AB**  
vogelsang.se

**Großbritannien**  
**Vogelsang Ltd.**  
vogelsang.co.uk

**Australien**  
**Vogelsang Pty. Ltd.**  
vogelsang.com.au

**Malaysia**  
**Vogelsang Malaysia**  
vogelsang.info

**Frankreich**  
**Vogelsang France S.A.R.L.**  
vogelsang.fr

**Indien**  
**Vogelsang India Private Limited**  
vogelsangindia.com

**Finnland**  
**Vogelsang Oy**  
vogelsang.fi

**Italien**  
**Vogelsang Italy Srl**  
vogelsang-srl.it

**Tschechische Republik**  
**Vogelsang CZ s.r.o.**  
vogelsang-czech.cz

**Irland**  
**Vogelsang Irland**  
vogelsang.ie

**Polen**  
**Vogelsang Poland Sp. z o.o.**  
vogelsang.pl

**Dänemark**  
**Vogelsang A/S**  
vogelsang-as.dk

**Deutschland - Niederlassung Ost**  
**Vogelsang Lutherstadt Eisleben**  
vogelsang-gmbh.com

**Rumänien**  
**Vogelsang Romania SRL**  
vogelsang.ro

**Brasilien**  
**Vogelsang Brasil Ltda.**  
vogelsang.com.br

**China**  
**Vogelsang Mechanical Engineering (Shanghai) Co., Ltd.**  
vogelsang.com.cn

**Mexico**  
**Vogelsang De México S.de R.L. de CV**  
vogelsang.mx