

Spare Parts List

Rotary Lobe Pump

VX186QD

Issuer

Vogelsang GmbH & Co. KG
Holthöge 10-14
49632 Essen/Oldb.

Phone: +49 54 34 83 0
Fax: +49 54 34 83 10

www.vogelsang.info
info@vogelsang.info

In the absence of express, written authorisation from the issuer, the reproduction or partial reproduction of this document in any form is prohibited.

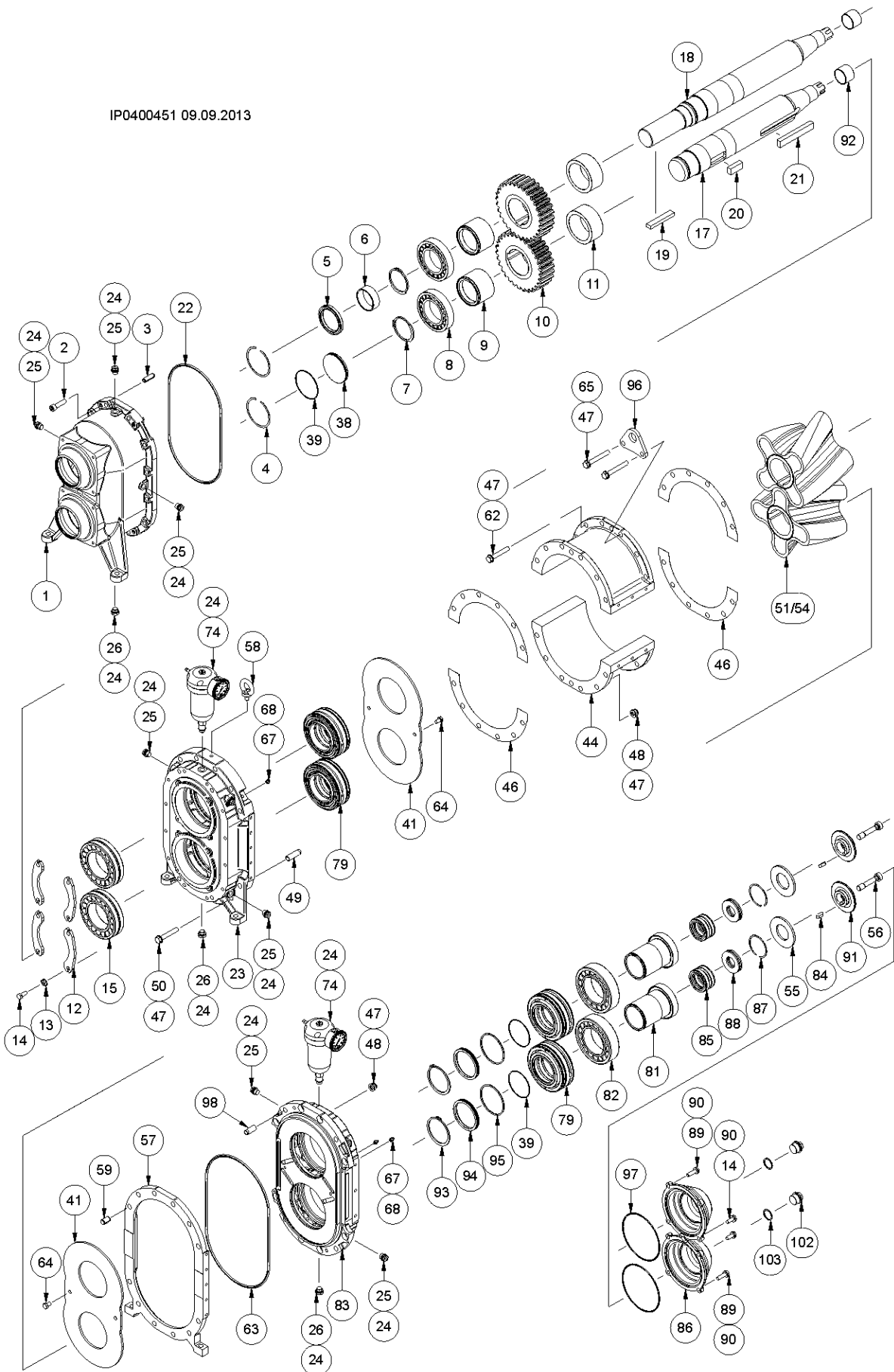
We reserve the right to make technical modifications to the diagrams and information presented in this document in the event that such modifications become necessary for the enhancement of the machine.

Contents

Exploded view	4
Gearbox housing and accessories.....	5
Position 1-16	5
PTO shaft.....	5
Position 17-19	5
Motor shaft.....	6
Position 17-19	6
Fitting key.....	6
Position 1-15	6
Bearing seal housing + accessories	7
Positions 22-26 + 38-39	7
Wear plate.....	7
Position 41	7
Pump housing segment	8
Position 44	8
Injection module pump housing segment without radial wear plate	9
Position 44	9
Injection module pump housing segment with radial wear plate	10
Position 44	10
Gasket for pump housing segment.....	11
Position 46	11
Bolts and accessories	11
Position 47-50	11
Rotary lobes	12
Position 51-54	12
HiFlo.....	13
Rotary lobes; bi-lobe	15
Solid material lobe.....	15
O-ring for solid material rotary lobes	15
Preload.....	16
Position 52-56	16
Cover flange and accessories	16
Position 57-77	16
Buffer chamber enlargement.....	16
Position 74	16
Cartridge mechanical seal.....	17
Pos. 79.....	17
"Loose parts" for Cartridge mechanical seal.....	18
Bearing seal housing + accessories	19
Position 81-95	19
Accessories.....	19
Pos. 96-103	19
Option: Intermediate flange.....	20
Position 72-73 + 75-78 + 80	20
Option: Component mechanical seal	21
Pos. 200-213	21
Tools.....	22
Material for connectors	23
Required spare parts for rotary lobe change	23
Necessary spare parts for Cartridge mechanical seal change	24
Necessary spare parts for wear part replacement with Cartridge mechanical seal	25
Necessary spare parts for component mechanical seal change.....	27
Component mechanical seal:.....	27
Necessary spare parts for wear part replacement with component mechanical seal.....	28
Component mechanical seal:.....	28

Exploded view

IP0400451 09.09.2013



Gearbox housing and accessories

Position 1-16

Pos.	Part number	Description	Dimensions	Notes	Rep.	92	130	184	260	368	390	520	736
1	PGP.A019.T3	Gear box housing											
	PGP1045	Gear box housing		Option: Alu									1
2	NSI.091	Cylinder head bolt	M12 x 45	DIN 912									12
3	NSP.017	Spring pin	13 x 40	DIN 1481									4
	NSP.002	Spring pin	8 x 40	DIN 1481									4
4	NSR.027	Multi-disc ring	95 x 5 x 0,98										2
Motor shaft:													
5	DWD.049.HNB	Radial shaft seal ring	72 x 95 x 10	HNBR									1
	DWD.049.VI	Radial shaft seal ring	72 x 95 x 10	FKM									1
6	NIR.014	Inner ring	JR 65 x 72 x 25										1
PTO shaft:													
5	DWD.049.HNB	Radial shaft seal ring	72 x 95 x 10	HNBR									2
	DWD.049.VI	Radial shaft seal ring	72 x 95 x 10	FKM									2
6	NIR.014	Inner ring	JR 65 x 72 x 25										2
7	NSR.011	Retaining ring	AS 75 x 4	DIN 471									2
8	NLG.027	Cylindrical roller bearing											2
9	PRS.A001.N1	Distance sleeve											2
10	PZH.A004	Gear											2
11	PRS.A002	Distance sleeve											2
12	PFL.A016	Bearing fixing sheet											4
13	NUS.066	Lock washer	10,5	DIN 432									8
14	NSK.027	Hexagon head bolt	M 10 x 25										12
				Option: intermediate flange									
15	NLG.025	Spherical roller bearing											2

PTO shaft

Position 17-19

Pos.	Part number	Description	Dimensions	Notes	Rep.	92	130	184	260	368	390	520	736
17/ 18	PWL.A031.N1	PTO shaft	VX186-130-P6-QD			-	2	-	-	-	-	-	-
	PWL.A032.N1	PTO shaft	VX186-184-P6-QD			-	-	2	-	-	-	-	-
	PWL.A033.N1	PTO shaft	VX186-260-P6-QD			-	-	-	2	-	-	-	-
	PWL.A034.N1	PTO shaft	VX186-368-P6-QD			-	-	-	-	2	-	-	-
	PWL.A038.N1	PTO shaft	VX186-390-P6-QD			-	-	-	-	-	2	-	-
	PWL.A035.N1	PTO shaft	VX186-520-P6-QD			-	-	-	-	-	-	2	-
	PWL.A041.N1	PTO shaft	VX186-736-P6-QD			-	-	-	-	-	-	-	2
17/ 18	PWL.A014.N1	PTO shaft	VX186-368-P20-QD			-	-	-	-	2	-	-	-
	PWL.A040.N1	PTO shaft	VX186-390-P20-QD			-	-	-	-	-	2	-	-
	PWL.A039.N1	PTO shaft	VX186-520-P20-QD			-	-	-	-	-	-	2	-

Motor shaft

Position 17-19

Pos.	Part number	Description	Dimensions	Notes	Rep.	92	130	184	260	368	390	520	736
17	PWL0019	Motor shaft	VX186-92-MK-QD	Short		1	-	-	-	-	-	-	-
	PWL.A008.N1	Motor shaft	VX186-130-MK-QD	Short		-	1	-	-	-	-	-	-
	PWL.A009.N1	Motor shaft	VX186-184-MK-QD	Short		-	-	1	-	-	-	-	-
	PWL.A010.N1	Motor shaft	VX186-260-MK-QD	Short		-	-	-	1	-	-	-	-
	PWL.A011.N1	Motor shaft	VX186-368-MK-QD	Short		-	-	-	-	1	-	-	-
	PWL.A037.N1	Motor shaft	VX186-390-MK-QD	Short		-	-	-	-	-	1	-	-
	PWL.A012.N1	Motor shaft	VX186-520-MK-QD	Short		-	-	-	-	-	-	1	-
	PWL.A015.N1	Motor shaft	VX186-736-MK-QD	Short		-	-	-	-	-	-	-	1
18	PWL0018	Motor shaft	VX186-92-M60-QD	Long		1	-	-	-	-	-	-	-
	PWL.A002.N1	Motor shaft	VX186-130-M60-QD	Long		-	1	-	-	-	-	-	-
	PWL.A003.N1	Motor shaft	VX186-184-M60-QD	Long		-	-	1	-	-	-	-	-
	PWL.A004.N1	Motor shaft	VX186-260-M60-QD	Long		-	-	-	1	-	-	-	-
	PWL.A005.N1	Motor shaft	VX186-368-M60-QD	Long		-	-	-	-	1	-	-	-
	PWL.A036.N1	Motor shaft	VX186-390-M60-QD	Long		-	-	-	-	-	1	-	-
	PWL.A006.N1	Motor shaft	VX186-520-M60-QD	Long		-	-	-	-	-	-	1	-
	PWL.A016.N1	Motor shaft	VX186-736-M60-QD	Long		-	-	-	-	-	-	-	1
18	PWL.A008.N1.H	Hollow shaft ⁽⁷⁾	VX186-130QD	MH Ø40, Ø80 mm		-	1	-	-	-	-	-	-
	PWL.A003.N1.H	Hollow shaft ⁽⁷⁾	VX186-184QD	MH Ø40, Ø80 mm		-	-	1	-	-	-	-	-
	PWL.A004.N1.H	Hollow shaft ⁽⁷⁾	VX186-260QD	MH Ø40, Ø80 mm		-	-	-	1	-	-	-	-
	PWL.A005.N1.H	Hollow shaft ⁽⁷⁾	VX186-368QD	MH Ø40, Ø80 mm		-	-	-	-	1	-	-	-
	PWL.A037.N1.H	Hollow shaft ⁽⁷⁾	VX186-390QD	MH Ø40, Ø80 mm		-	-	-	-	-	1	-	-
	PWL.A006.N1.H	Hollow shaft ⁽⁷⁾	VX186-520QD	MH Ø40, Ø80 mm		-	-	-	-	-	-	1	-
	PWL.A015.N1.H	Hollow shaft ⁽⁷⁾	VX186-736QD	MH Ø40, Ø80 mm		-	-	-	-	-	-	-	1
18	PWQ0169	Hollow shaft ⁽⁷⁾	VX186-184QD	MH Ø50, Ø80 mm		-	-	1	-	-	-	-	-
	PWQ0121	Hollow shaft ⁽⁷⁾	VX186-368QD	MH Ø50, Ø80 mm		-	-	-	-	1	-	-	-
	PWQ0122	Hollow shaft ⁽⁷⁾	VX186-390QD	MH Ø50, Ø80 mm		-	-	-	-	-	1	-	-
	PWQ0096	Hollow shaft ⁽⁷⁾	VX186-520QD	MH Ø50, Ø80 mm		-	-	-	-	-	-	1	-
	PWQ0224	Hollow shaft ⁽⁷⁾	VX186-736QD	MH Ø50, Ø80 mm		-	-	-	-	-	-	-	1

⁽⁷⁾ for hydraulic motor

Fitting key

Position 1-15

Pos.	Part number	Description	Dimensions	Notes	Rep.	92	130	184	260	368	390	520	736
19	NPF.047	Fitting key	B 18 x 11 x 100	Motor shaft long		1	1	1	1	1	1	1	1
20	NPF.040	Fitting key	B 22 x 14 x 50	DIN 6885		2	2	2	2	2	2	2	2
21	NPF.040	Fitting key	B 22 x 14 x 50	DIN 6885		2	-	-	-	-	-	-	-
	NPF.041	Fitting key	B 22 x 14 x 70	DIN 6885		-	-	-	-	-	2	-	-
	NPF.042	Fitting key	B 22 x 14 x 90	DIN 6885		-	2	-	-	-	-	-	-
	NPF.043	Fitting key	B 22 x 14 x 100	DIN 6885		-	-	-	-	2	-	4	4
	NPF.044	Fitting key	B 22 x 14 x 140	DIN 6885		-	-	2	-	-	4	4	4
	NPF.045	Fitting key	B 22 x 14 x 220	DIN 6885		-	-	-	2	2	-	-	2

Bearing seal housing + accessories

Positions 22-26 + 38-39

Pos.	Part number	Description	Dimensions	Notes	Rep.	92	130	184	260	368	390	520	736
22	DOR.026	O-ring	330 x 6	NBR 70									
	DOR.026.VI	O-ring	330 x 6	FKM						1			
23	PGP.A018.T1	Bearing seal housing											
	PGP0951	Bearing seal housing		Option: Alu						1			
24	DKR.005	Copper ring	C 16 x 22 x 2							16			
25	NSK.081	Screw plug	M 16 x 1.5							11			
26	NSK.088	Screw plug	M16	Magnetic						3			
38	PRS.A028	Plug disc		Motor shaft short						1			
39	DOR.044	O-ring	85 x 2,5; NBR	Motor shaft short									
	DOR.044.VI	O-ring	85 x 2,5; FKM								1		
39	DOR.044	O-ring	85 x 2,5; NBR	QD cover									
	DOR.044.VI	O-ring	85 x 2,5; FKM								2		

Wear plate

Position 41

Pos.	Part number	Description	Dimensions	Notes	Rep.	92	130	184	260	368	390	520	736
41	PFL.A017	Wear plate	6 mm										
	PFL.A017.G1	Wear plate	6 mm	Tungsten carbide coated									
	PFL.A017.T2	Wear plate	5,7 mm										

Pump housing segment

Position 44

Pos.	Part number	Description	Dimensions	Notes	Rep.	92	130	184	260	368	390	520	736
------	-------------	-------------	------------	-------	------	----	-----	-----	-----	-----	-----	-----	-----



44	PGP.A007	Pump housing segment	92	0.6025		2	-	-	-	-	-	-	-
	PGP.A008	Pump housing segment	130	0.6025		-	2	-	-	-	2	-	-
	PGP.A009	Pump housing segment	184	0.6025		-	-	2	-	4	-	-	8
	PGP.A010	Pump housing segment	260	0.6025		-	-	-	2	-	2	4	-
	PGP.A007.G1	Pump housing segment	92	Tungsten carbide coated		2	-	-	-	-	-	-	-
	PGP.A008.G1	Pump housing segment	130	Tungsten carbide coated		-	2	-	-	-	2	-	-
	PGP.A009.G1	Pump housing segment	184	Tungsten carbide coated		-	-	2	-	4	-	-	8
	PGP.A010.G1	Pump housing segment	260	Tungsten carbide coated		-	-	-	2	-	2	4	-
	PGP.A007.G2	Pump housing segment	92	EN-JS-1100 (ADI)		2	-	-	-	-	-	-	-
	PGP.A008.G2	Pump housing segment	130	EN-JS-1100 (ADI)		-	2	-	-	-	2	-	-
	PGP.A009.G2	Pump housing segment	184	EN-JS-1100 (ADI)		-	-	2	-	4	-	-	8
	PGP.A010.G2	Pump housing segment	260	EN-JS-1100 (ADI)		-	-	-	2	-	2	4	-



Injection S

44	PGP.A040	Pump housing segment	92	0.6025		2	-	-	-	-	-	-	-
	PGP.A041	Pump housing segment	130	0.6025		-	2	-	-	-	2	-	-
	PGP.A042	Pump housing segment	184	0.6025		-	-	2	-	4	-	-	8
	PGP.A043	Pump housing segment	260	0.6025		-	-	-	2	-	2	4	-
	PGP.A040.G1	Pump housing segment	92	Tungsten carbide coated		2	-	-	-	-	-	-	-
	PGP.A041.G1	Pump housing segment	130	Tungsten carbide coated		-	2	-	-	-	2	-	-
	PGP.A042.G1	Pump housing segment	184	Tungsten carbide coated		-	-	2	-	4	-	-	8
	PGP.A043.G1	Pump housing segment	260	Tungsten carbide coated		-	-	-	2	-	2	4	-
	PGP.A040.G2	Pump housing segment	92	EN-JS-1100 (ADI)		2	-	-	-	-	-	-	-
	PGP.A041.G2	Pump housing segment	130	EN-JS-1100 (ADI)		-	2	-	-	-	2	-	-
	PGP.A042.G2	Pump housing segment	184	EN-JS-1100 (ADI)		-	-	2	-	4	-	-	8
	PGP.A043.G2	Pump housing segment	260	EN-JS-1100 (ADI)		-	-	-	2	-	2	4	-

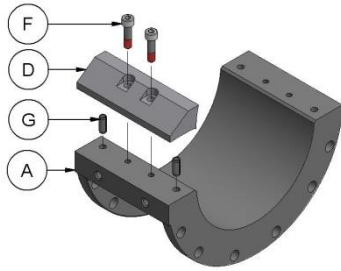


Injection A

44	PGP0089	Pump housing segment	92	0.6025		2	-	-	-	-	-	-	-
	PGP0086	Pump housing segment	130	0.6025		-	2	-	-	-	2	-	-
	PGP0087	Pump housing segment	184	0.6025		-	-	2	-	4	-	-	8
	PGP0088	Pump housing segment	260	0.6025		-	-	-	2	-	2	4	-
	PGP0113	Pump housing segment	92	EN-JS-1100 (ADI)		2	-	-	-	-	-	-	-
	PGP0080	Pump housing segment	130	EN-JS-1100 (ADI)		-	2	-	-	-	2	-	-
	PGP0114	Pump housing segment	184	EN-JS-1100 (ADI)		-	-	2	-	4	-	-	8
	PGP0115	Pump housing segment	260	EN-JS-1100 (ADI)		-	-	-	2	-	2	4	-

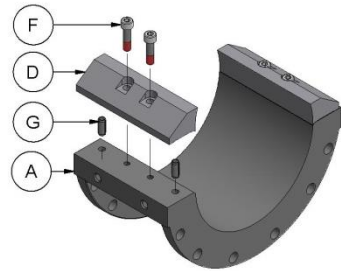
Injection module pump housing segment without radial wear plate

Position 44



Injection A

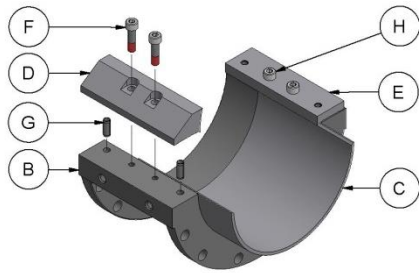
Pos.	Part number	Description	Dimensions	Notes	Rep.	92	130	184	260	368	390	520	736
A	PGP0266	Pump housing segment	92			2	-	-	-	-	-	-	-
	PGP0267	Pump housing segment	130			-	2	-	-	-	2	-	-
	PGP0268	Pump housing segment	184			-	-	2	-	4	-	-	8
	PGP0269	Pump housing segment	260			-	-	-	2	-	2	4	-
D	PGP0703	Injection Module	92			2	-	-	-	-	-	-	-
	PGP0702	Injection Module	130			-	2	-	-	-	2	-	-
	PGP0704	Injection Module	184			-	-	2	-	4	-	-	8
	PGP0705	Injection Module	260			-	-	-	2	-	2	4	-
F	NSI0172	Cylinder head bolt	M 10 x 30 mm	ISO 4762		4	4	4	4	8	8	8	16
G	NSP0019	Spring pin	8 mm x 20 mm	ISO 13337		4	4	4	4	8	8	8	16



Injection S

Pos.	Part number	Description	Dimensions	Notes	Rep.	92	130	184	260	368	390	520	736
A	PGP0266	Pump housing segment	92			2	-	-	-	-	-	-	-
	PGP0267	Pump housing segment	130			-	2	-	-	-	2	-	-
	PGP0268	Pump housing segment	184			-	-	2	-	4	-	-	8
	PGP0269	Pump housing segment	260			-	-	-	2	-	2	4	-
D	PGP0703	Injection Module	92			4	-	-	-	-	-	-	-
	PGP0702	Injection Module	130			-	4	-	-	-	4	-	-
	PGP0704	Injection Module	184			-	-	4	-	8	-	-	16
	PGP0705	Injection Module	260			-	-	-	4	-	4	8	-
F	NSI0172	Cylinder head bolt	M 10 x 30 mm	ISO 4762		8	8	8	8	16	16	16	32
G	NSP0019	Spring pin	8 mm x 20 mm	ISO 13337		8	8	8	8	16	16	16	32

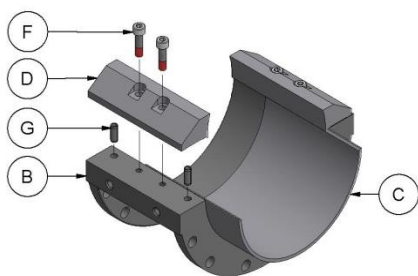
Injection module pump housing segment with radial wear plate
Position 44



Injection A

Pos.	Part number	Description	Dimensions	Notes	Rep.	92	130	184	260	368	390	520	736
B	PGP0262	Pump housing segment	92	Radial wear plate		2	-	-	-	-	-	-	-
	PGP0263	Pump housing segment	130	Radial wear plate		-	2	-	-	-	2	-	-
	PGP0264	Pump housing segment	184	Radial wear plate		-	-	2	-	4	-	-	8
	PGP0265	Pump housing segment	260	Radial wear plate		-	-	-	2	-	2	4	-
C	PFL0131	Wear plate	92	Radial		2	-	-	-	-	-	-	-
	RFL4611	Wear plate	130	Radial		-	2	-	-	-	2	-	-
	RFL4612	Wear plate	184	Radial		-	-	2	-	4	-	-	8
	RFL4613	Wear plate	260	Radial		-	-	-	2	-	2	4	-
D	PGP0703	Injection Module	92			2	-	-	-	-	-	-	-
	PGP0702	Injection Module	130			-	2	-	-	-	2	-	-
	PGP0704	Injection Module	184			-	-	2	-	4	-	-	8
	PGP0705	Injection Module	260			-	-	-	2	-	2	4	-
E	PGP0552	Module, straight	92			2	-	-	-	-	-	-	-
	PGP0553	Module, straight	130			-	2	-	-	-	2	-	-
	PGP0554	Module, straight	184			-	-	2	-	4	-	-	8
	PGP0555	Module, straight	260			-	-	-	2	-	2	4	-
F	NSI0172	Cylinder head bolt	M 10 x 30 mm	ISO 4762		4	4	4	4	8	8	8	16
G	NSP0019	Spring pin	8 mm x 20 mm	ISO 13337		8	8	8	8	16	16	16	32
H	NSI0173	Cylinder head bolt	M 10 x 20 mm	ISO 4762		4	4	4	4	8	8	8	16

Continuation see next page



Injection S

Pos.	Part number	Description	Dimensions	Notes	Rep.	92	130	184	260	368	390	520	736
B	PGP0262	Pump housing segment	92	Radial wear plate		2	-	-	-	-	-	-	-
	PGP0263	Pump housing segment	130	Radial wear plate		-	2	-	-	-	2	-	-
	PGP0264	Pump housing segment	184	Radial wear plate		-	-	2	-	4	-	-	8
	PGP0265	Pump housing segment	260	Radial wear plate		-	-	-	2	-	2	4	-
C	PFL0131	Wear plate	92	Radial		2	-	-	-	-	-	-	-
	RFL4611	Wear plate	130	Radial		-	2	-	-	-	2	-	-
	RFL4612	Wear plate	184	Radial		-	-	2	-	4	-	-	8
	RFL4613	Wear plate	260	Radial		-	-	-	2	-	2	4	-
D	PGP0703	Injection Module	92			4	-	-	-	-	-	-	-
	PGP0702	Injection Module	130			-	4	-	-	-	4	-	-
	PGP0704	Injection Module	184			-	-	4	-	8	-	-	16
	PGP0705	Injection Module	260			-	-	-	4	-	4	8	-
F	NSI0172	Cylinder head bolt	M 10 x 30 mm	ISO 4762		8	8	8	8	16	16	16	32
G	NSP0019	Spring pin	8 mm x 20 mm	ISO 13337		8	8	8	8	16	16	16	32

Gasket for pump housing segment

Position 46

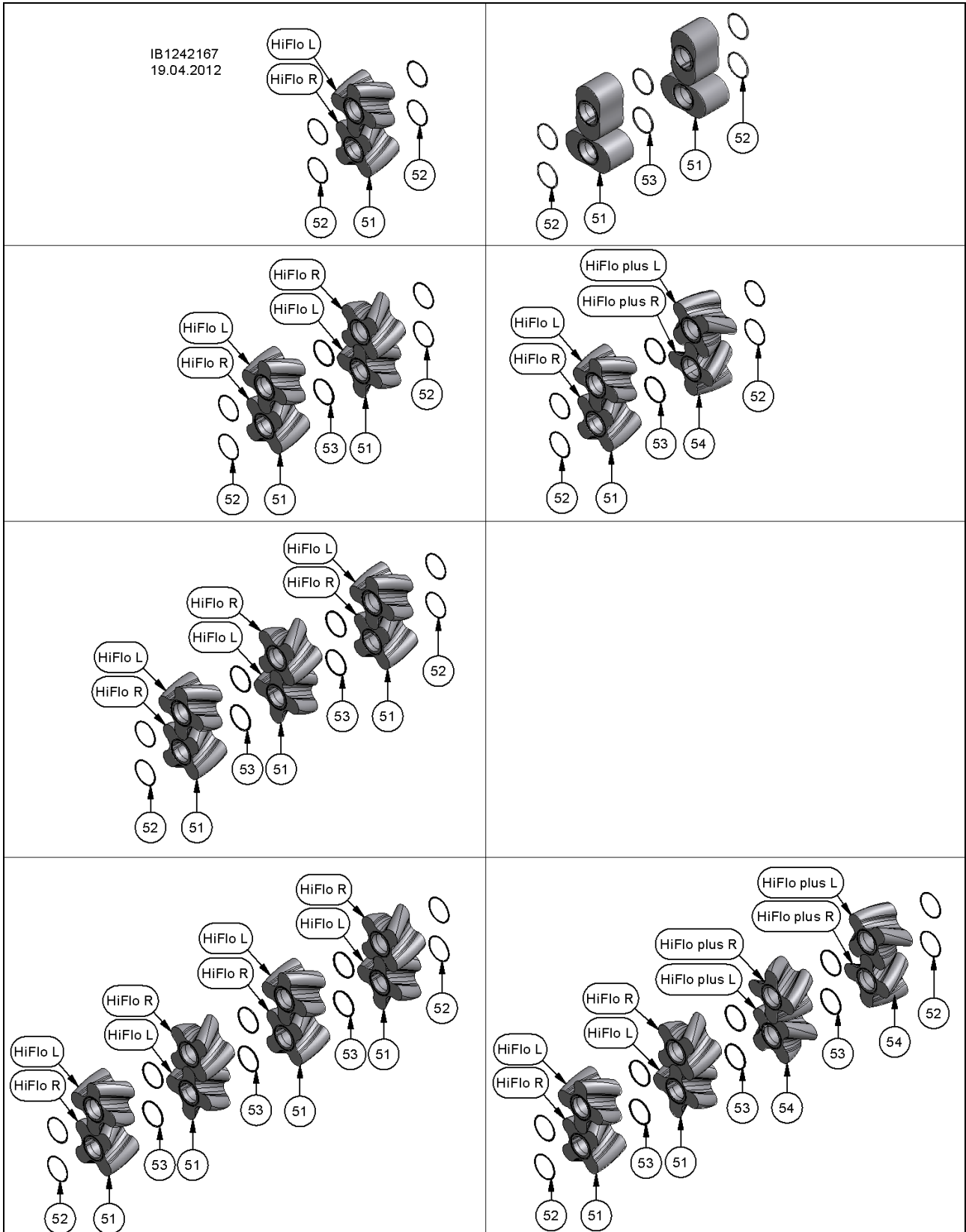
Pos.	Part number	Description	Dimensions	Notes	Rep.	92	130	184	260	368	390	520	736
46	DAD.028	Flat gasket		Asbestos-free		4	4	4	4	6	6	6	10

Bolts and accessories

Position 47-50

Pos.	Part number	Description	Dimensions	Notes	Rep.	92	130	184	260	368	390	520	736
47	NUS.005	Washer	A 13 x 24 x 2,5	DIN 125		48	48	48	48	-	-	-	-
48	NMK.002	Hexagon nut	M12	Self-locking		32	32	32	32	8	8	8	8
	NMK.019	Hexagon nut	M12	DIN 6331		-	-	-	-	24	24	24	24
49	NSP.022	Spring pin	16 x 50	DIN 7346		4	4	4	4	4	4	4	4
50	NSK.176	Hexagon head bolt	M12 x 75	DIN 931		12	12	12	12	-	-	-	-

Rotary lobes
Position 51-54



HiFlo

HiFlo SBR

Pos.	Part number	Description	Dimensions	Notes	Rep.	92	130	184	260	368	390	520	736
51	PKD.A040.TL	Rotary lobe	92; 4K45L HiFlo	SBR		1	-	-	-	-	-	-	-
	PKD.A040.TR	Rotary lobe	92; 4K45L HiFlo	SBR		1	-	-	-	-	-	-	-
	PKD.A031.TL	Rotary lobe	130; 4K45L HiFlo	SBR		-	1	-	2 (1)	-	3	4 (2)	-
	PKD.A031.TR	Rotary lobe	130; 4K45R HiFlo	SBR		-	1	-	2 (1)	-	3	4 (2)	-
	PKD.A025.TL	Rotary lobe	184; 4K45L HiFlo	SBR		-	-	1	-	2 (1)	-	-	4 (2)
	PKD.A025.TR	Rotary lobe	184; 4K45R HiFlo	SBR		-	-	1	-	2 (1)	-	-	4 (2)
54		Rotary lobe	130; 4K45L HiFloplus	SBR70		-	-	-	(1)	-	-	(2)	-
		Rotary lobe	130; 4K45R HiFloplus	SBR70		-	-	-	(1)	-	-	(2)	-
		Rotary lobe	184; 4K45L HiFloplus	SBR70		-	-	-	-	(1)	-	-	(2)
		Rotary lobe	184; 4K45R HiFloplus	SBR70		-	-	-	-	(1)	-	-	(2)

HiFlo NBR

Pos.	Part number	Description	Dimensions	Notes	Rep.	92	130	184	260	368	390	520	736
51	PKD.A039.TL	Rotary lobe	92; 4K45L HiFlo	NBR		1	-	-	-	-	-	-	-
	PKD.A039.TR	Rotary lobe	92; 4K45L HiFlo	NBR		1	-	-	-	-	-	-	-
	PKD.A030.TL	Rotary lobe	130; 4K45L HiFlo	NBR		-	1	-	2 (1)	-	3	4 (2)	-
	PKD.A030.TR	Rotary lobe	130; 4K45R HiFlo	NBR		-	1	-	2 (1)	-	3	4 (2)	-
	PKD.A024.TL	Rotary lobe	184; 4K45L HiFlo	NBR		-	-	1	-	2 (1)	-	-	4 (2)
	PKD.A024.TR	Rotary lobe	184; 4K45R HiFlo	NBR		-	-	1	-	2 (1)	-	-	4 (2)
54	PKD0019	Rotary lobe	130; 4K45L HiFloplus	NBR		-	-	-	(1)	-	-	(2)	-
	PKD0020	Rotary lobe	130; 4K45R HiFloplus	NBR		-	-	-	(1)	-	-	(2)	-
	PKD0017	Rotary lobe	184; 4K45L HiFloplus	NBR		-	-	-	-	(1)	-	-	(2)
	PKD0018	Rotary lobe	184; 4K45R HiFloplus	NBR		-	-	-	-	(1)	-	-	(2)

() quantity for HiFlo plus

51	PKD0561	Rotary lobe	130; 4K45L HiFlo	NBR Alu		-	1	-	2	-	3	4	-
	PKD0562	Rotary lobe	130; 4K45R HiFlo	NBR Alu		-	1	-	2	-	3	4	-
	PKD0512	Rotary lobe	184; 4K45L HiFlo	NBR Alu		-	-	1	-	2	-	-	4
	PKD0511	Rotary lobe	184; 4K45R HiFlo	NBR Alu		-	-	1	-	2	-	-	4
51	PKD0029	Rotary lobe	184; 4K45L HiFlo	NBR white		-	-	1	-	2	-	-	4
	PKD0030	Rotary lobe	184; 4K45R HiFlo	NBR white		-	-	1	-	2	-	-	4

HiFlo PUR

Pos.	Part number	Description	Dimensions	Notes	Rep.	92	130	184	260	368	390	520	736
51	PKD128	Rotary lobe	130 3K60L	PUR		-	1	-	2	-	3	4	-
	PKD129	Rotary lobe	130 3K60R	PUR		-	1	-	2	-	3	4	-

HiFlo EPDM

Pos.	Part number	Description	Dimensions	Notes	Rep.	92	130	184	260	368	390	520	736
51	PKD.A047.TL	Rotary lobe	92; 4K45L HiFlo	EPDM-SL		1	-	-	-	-	-	-	-
	PKD.A047.TR	Rotary lobe	92; 4K45L HiFlo	EPDM-SL		1	-	-	-	-	-	-	-
	PKD.A048.TL	Rotary lobe	130; 4K45L HiFlo	EPDM-SL		-	1	-	2 (1)	-	3	4 (2)	-
	PKD.A048.TR	Rotary lobe	130; 4K45R HiFlo	EPDM-SL		-	1	-	2 (1)	-	3	4 (2)	-
	PKD.A049.TL	Rotary lobe	184; 4K45L HiFlo	EPDM-SL		-	-	1	-	2 (1)	-	-	4 (2)
	PKD.A049.TR	Rotary lobe	184; 4K45R HiFlo	EPDM-SL		-	-	1	-	2 (1)	-	-	4 (2)
54	PKD0050	Rotary lobe	130; 4K45L HiFloplus	EPDM-SL		-	-	-	(1)	-	-	(2)	-
	PKD0051	Rotary lobe	130; 4K45R HiFloplus	EPDM-SL		-	-	-	(1)	-	-	(2)	-
	PKD0031	Rotary lobe	184; 4K45L HiFloplus	EPDM-SL		-	-	-	-	(1)	-	-	(2)
	PKD0032	Rotary lobe	184; 4K45R HiFloplus	EPDM-SL		-	-	-	-	(1)	-	-	(2)

() quantity for HiFlo plus

HiFlo FKM

Pos.	Part number	Description	Dimensions	Notes	Rep.	92	130	184	260	368	390	520	736
51	PKD.A044.TL	Rotary lobe	92; 4K45L HiFlo	FKM ⁽¹⁾		1	-	-	-	-	-	-	-
	PKD.A044.TR	Rotary lobe	92; 4K45L HiFlo	FKM ⁽¹⁾		1	-	-	-	-	-	-	-
	PKD.A034.TL	Rotary lobe	130; 4K45L HiFlo	FKM ⁽¹⁾		-	1	-	2 (1)	-	3	4 (2)	-
	PKD.A034.TR	Rotary lobe	130; 4K45R HiFlo	FKM ⁽¹⁾		-	1	-	2 (1)	-	3	4 (2)	-
	PKD.A028.TL	Rotary lobe	184; 4K45L HiFlo	FKM ⁽¹⁾		-	-	1	-	2 (1)	-	-	4 (2)
	PKD.A028.TR	Rotary lobe	184; 4K45R HiFlo	FKM ⁽¹⁾		-	-	1	-	2 (1)	-	-	4 (2)
54		Rotary lobe	130; 4K45L HiFloplus	FKM ⁽¹⁾		-	-	-	(1)	-	-	(2)	-
		Rotary lobe	130; 4K45R HiFloplus	FKM ⁽¹⁾		-	-	-	(1)	-	-	(2)	-
		Rotary lobe	184; 4K45L HiFloplus	FKM ⁽¹⁾		-	-	-	-	(1)	-	-	(2)
		Rotary lobe	184; 4K45R HiFloplus	FKM ⁽¹⁾		-	-	-	-	(1)	-	-	(2)

⁽¹⁾ max. 6 bar [87 psi], please pay attention to the admissible pressure of pump!

HiFlo WEROBUST

Pos.	Part number	Description	Dimensions	Notes	Rep.	92	130	184	260	368	390	520	736
51	PKD.A041.TL	Rotary lobe	92; 4K45L HiFlo	WEROBUST ⁽²⁾		1	-	-	-	-	-	-	-
	PKD.A041.TR	Rotary lobe	92; 4K45L HiFlo	WEROBUST ⁽²⁾		1	-	-	-	-	-	-	-
	PKD.A032.TL	Rotary lobe	130; 4K45L HiFlo	WEROBUST ⁽²⁾		-	1	-	2 (1)	-	3	4 (2)	-
	PKD.A032.TR	Rotary lobe	130; 4K45R HiFlo	WEROBUST ⁽²⁾		-	1	-	2 (1)	-	3	4 (2)	-
	PKD.A026.TL	Rotary lobe	184; 4K45L HiFlo	WEROBUST ⁽²⁾		-	-	1	-	2 (1)	-	-	4 (2)
	PKD.A026.TR	Rotary lobe	184; 4K45R HiFlo	WEROBUST ⁽²⁾		-	-	1	-	2 (1)	-	-	4 (2)
54		Rotary lobe	130; 4K45 HiFloplus	WEROBUST ⁽²⁾		-	-	-	(1)	-	-	(2)	-
		Rotary lobe	130; 4K45 HiFloplus	WEROBUST ⁽²⁾		-	-	-	(1)	-	-	(2)	-
	PKD0064	Rotary lobe	184; 4K45 HiFloplus	WEROBUST ⁽²⁾		-	-	-	-	(1)	-	-	(1)
	PKD0065	Rotary lobe	184; 4K45 HiFloplus	WEROBUST ⁽²⁾		-	-	-	-	(1)	-	-	(1)

⁽²⁾ Attention! Usable up to 50°C medium temperature, only!

() quantity for HiFlo plus

Rotary lobes; bi-lobe

Pos.	Part number	Description	Dimensions	Notes	Rep.	92	130	184	260	368	390	520	736
51	PKD.A002	Rotary lobe, bi-lobe	92	SBR		2	-	4	-	-	-	-	-
	PKD.A001	Rotary lobe, bi-lobe	130	SBR		-	2	-	4	-	-	-	-
	PKD.A004	Rotary lobe, bi-lobe	92	NBR		2	-	4	-	-	-	-	-
	PKD.A003	Rotary lobe, bi-lobe	130	NBR		-	2	-	4	-	-	-	-
	PKD.A004.W	Rotary lobe, bi-lobe	92	NBR white		2	-	4	-	-	-	-	-
	PKD.A003.W	Rotary lobe, bi-lobe	130	NBR white		-	2	-	4	-	-	-	-
	PKD.A006.SL	Rotary lobe, bi-lobe	92	EPDM-SL		2	-	4	-	-	-	-	-
	PKD.A005.SL	Rotary lobe, bi-lobe	130	EPDM-SL		-	2	-	4	-	-	-	-
	PKD.A006.W	Rotary lobe, bi-lobe	92	EPDM white		2	-	4	-	-	-	-	-
	PKD.A005.W	Rotary lobe, bi-lobe	130	EPDM white		-	2	-	4	-	-	-	-
	PKD.A008	Rotary lobe, bi-lobe	92	FKM ⁽¹⁾		2	-	4	-	-	-	-	-
	PKD.A007	Rotary lobe, bi-lobe	130	FKM ⁽¹⁾		-	2	-	4	-	-	-	-
PKD.A009	Rotary lobe, bi-lobe	92	WEROBUST ⁽²⁾		2	-	4	-	-	-	-	-	
PKD.A010	Rotary lobe, bi-lobe	130	WEROBUST ⁽²⁾		-	2	-	4	-	-	-	-	
51	PKD0103	Rotary lobe, bi-lobe	130	PUR		-	2	-	4	-	-	-	-
51	PKD.A011.N1	Rotary lobe, bi-lobe ⁽³⁾	92	1.0503 nitrided (C45)		2	-	4	-	-	-	-	-
	PKD.A012.N1	Rotary lobe, bi-lobe ⁽³⁾	130	1.0503 nitrided (C45)		-	2	-	4	-	-	-	-

⁽¹⁾ max. 6 bar [87 psi], please pay attention to the admissible pressure of pump!

⁽²⁾ Attention! Usable up to 50°C medium temperature, only!

⁽³⁾ + O-ring for solid material lobe

Solid material lobe HiFlo

Pos.	Part number	Description	Dimensions	Notes	Rep.	92	130	184	260	368	390	520	736
51	PKD A035.N1.TL	Rotary lobe ⁽³⁾	92; 4K45L HiFlo	1.0503 nitrided (C45)		1	-	-	-	-	-	-	-
	PKD A035.N1.TR	Rotary lobe ⁽³⁾	92; 4K45L HiFlo	1.0503 nitrided (C45)		1	-	-	-	-	-	-	-
	PKD A036.N1.TL	Rotary lobe ⁽³⁾	130; 4K45L HiFlo	1.0503 nitrided (C45)		-	1	-	2 (1)	-	3	4 (2)	-
	PKD A036.N1.TR	Rotary lobe ⁽³⁾	130; 4K45R HiFlo	1.0503 nitrided (C45)		-	1	-	2 (1)	-	3	4 (2)	-
	PKD.A037.N1.TL	Rotary lobe ⁽³⁾	184; 4K45L HiFlo	1.0503 nitrided (C45)		-	-	1	-	2 (1)	-	-	4 (2)
	PKD.A037.N1.TR	Rotary lobe ⁽³⁾	184; 4K45R HiFlo	1.0503 nitrided (C45)		-	-	1	-	2 (1)	-	-	4 (2)
54	PKD0203	Rotary lobe ⁽³⁾	130; 4K45L HiFloplus	1.0503 nitrided C45)		-	-	-	(1)	-	-	(2)	-
	PKD0204	Rotary lobe ⁽³⁾	130; 4K45R HiFloplus	1.0503 nitrided (C45)		-	-	-	(1)	-	-	(2)	-
	PKD0042	Rotary lobe ⁽³⁾	184; 4K45L HiFloplus	1.0503 nitrided (C45)		-	-	-	-	(1)	-	-	(2)
	PKD0043	Rotary lobe ⁽³⁾	184; 4K45R HiFloplus	1.0503 nitrided (C45)		-	-	-	-	(1)	-	-	(2)

⁽³⁾ + O-ring for solid material lobe

() quantity for HiFlo plus

O-ring for solid material rotary lobes

Pos.	Part number	Description	Dimensions	Notes	Rep.	92	130	184	260	368	390	520	736
52	DOR.085	O-ring ⁽⁵⁾	104 x 3	NBR		4	4	4	4	4	4	4	4
	DOR.085.EP	O-ring ⁽⁵⁾	104 x 3	EPDM									
	DOR.085.VI	O-ring ⁽⁵⁾	104 x 3	FKM									
	DOR.085.PT	O-ring ⁽⁵⁾	104 x 3	Silikon FEP coated									
53	DOR.163	O-ring ⁽⁵⁾	103 x 5	NBR		-	-	0 2 ⁽⁹⁾	2	2	4	6	6
	DOR.163.EP	O-ring ⁽⁵⁾	103 x 5	EPDM									
	DOR.163.VI	O-ring ⁽⁵⁾	103 x 5	FKM									
	DOR.163.PT	O-ring ⁽⁵⁾	103 x 5	Silikon FEP coated									

⁽⁵⁾ for solid material lobe

⁽⁹⁾ quantity for rotary lobe bi-lobe

Preload

Position 52-56

Pos.	Part number	Description	Dimensions	Notes	Rep.	92	130	184	260	368	390	520	736
55	NTF.003	Spring washer	100 x 51 x 6			2							
56	PRS.102	Strain bolt	M16			2							

Cover flange and accessories

Position 57-77

Pos.	Part number	Description	Dimensions	Notes	Rep.	92	130	184	260	368	390	520	736
57	PGP.A005.T2	Cover flange				1	1	1	1	1	1	1	1
58	NKS.006	Lifting eye bolt	M 12			1	1	1	1	1	1	1	1
59	NSP.024	Spring pin	16 x 26			4	4	4	4	8	8	8	16
60	ZNGS.095.0500	Threaded rod	M 12 x 500	DIN 976		-	-	-	-	12	-	-	-
	ZNGS.095.0530	Threaded rod	M 12 x 530	DIN 976		-	-	-	-	-	12	-	-
	ZNGS.095.0640	Threaded rod	M 12 x 640	DIN 976		-	-	-	-	-	-	12	-
	ZNGS.095.0870	Threaded rod	M 12 x 870	DIN 976		-	-	-	-	-	-	-	12
61	NMS.004	Hexagon nut	M 12	DIN 934		-	-	-	-	2	2	2	2
62	NSK.217	Hexagon head bolt	M 12 x 75	DIN 933		10	10	10	10	-	-	-	-
63	DOR.052	O-ring	368 x 6	NBR		1							
	DOR.052.EP	O-ring	368 x 6	EPDM									
	DOR.052.VI	O-ring	368 x 6	FKM									
	DOR.052.PT	O-ring	368 x 6	Silicone FEP coated									
64	NSK.025.EE	Hexagon head bolt	M 10 x 16			4							
65	NSK.133	Hexagon head bolt	M 12 x 90	DIN 933		2	2	2	2	-	-	-	-
67	NSK.080	Screw plug	M10 x 1	Motor shaft		4							
	NKS.001	Grease nipple	M10 x 1	PTO shaft									
68	DKR.001	Copper ring	C 10 x 16 x 1	Motor shaft		4							
	BKA.001	Grease nipple cap		PTO shaft									

Buffer chamber enlargement

Position 74

Pos.	Part number	Description	Dimensions	Notes	Rep.	92	130	184	260	368	390	520	736
74	PSG.014	Buffer fluid tank		Pressurized		2							
	PSG.014.T1	Quenching fluid tank		Ventilated (option)									
	PSV.002.N1	Pressure valve		(Option)									

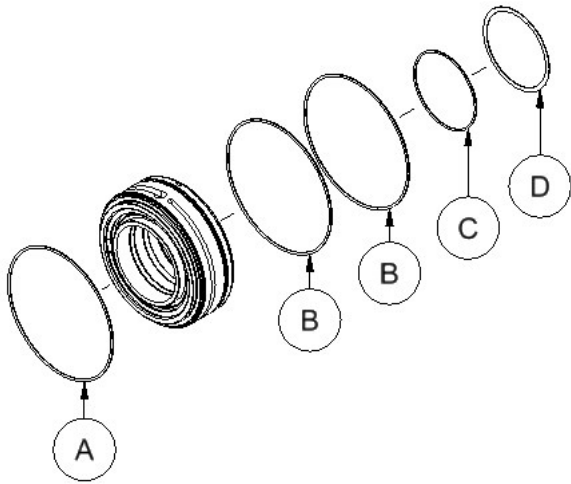
Cartridge mechanical seal

Pos. 79

Pos.	Part number	Description	Dimensions	Notes	Rep.	92	130	184	260	368	390	520	736	
Stahl nitriert														
79	PBT.A002	Cartridge mechanical seal HD; single mechanical seal		WC/SiC, HNBR, HNBR										
	PBT0450			WC/SiC, HNBR, FKM										
	PBT1716			WC/SiC, FKM, FKM										
	PBT.A004			Duronit ⁽⁴⁾ , HNBR, HNBR										
	PBT1718			Duronit ⁽⁴⁾ , FKM, FKM										
	PBT1720			WC/SiC, EPDM, FKM										
	PBT.A012	Cartridge mechanical seal Block ring single mechanical seal		WC/SiC, HNBR, HNBR										
	PBT0487			WC/SiC, HNBR, HNBR										
	PBT.A020			WC/SiC, HNBR, HNBR										
	PBT.A033			WC/SiC, HNBR, HNBR										
	PBT0195			WC/SiC, HNBR, HNBR										
	PBT0461			WC/SiC, HNBR, FKM										
	PBT0547			WC/SiC, FKM, FKM										
	PBT1706			WC/SiC, EPDM, FKM										
	PBT1709			SiC, FEPM, FKM										
	PBT1705			WC/SiC, FFKM, FKM										
	PBT1836			SiC, FFKM, PTFE										
	PBT.A014			Carbone / HNBR, NBR										
	PBT1698			Carbone / FKM, FKM										
	PBT1700			Carbone / EPDM, FKM										
	PBT.A021			CrO/Duronit ⁽⁴⁾ , HNBR, HNBR										
	PBT1014			Duronit ⁽⁴⁾ , HNBR, HNBR										
	PBT1903			Duronit ⁽⁴⁾ , HNBR, HNBR										
	PBT1712			Duronit ⁽⁴⁾ , EPDM, FKM										
	PBT0712			Duronit ⁽⁴⁾ , FKM, FKM										

4

⁽⁴⁾ up to 10 bar [145 psi] real operating pressure



"Loose parts" for Cartridge mechanical seal

Quantity per cartridge

Pos.	Part number	Description	Dimensions	Notes	Qty.
A	DOR.027	O-ring	144 x 3	NBR	1
	DOR.027.VI	O-ring	144.5 x 3	FKM	
B	DOR.027	O-ring	144 x 3	NBR	2
	DOR.027.EP	O-ring	144.5 x 3	EPDM	
	DOR.027.VI	O-ring	144.5 x 3	FKM	
	DOR.027.PT	O-ring	144 x 3	Silicone FEP coated	
C	DOR.044	O-ring	85 x 2.5	NBR	1
	DOR.044.VI	O-ring	85 x 2.5	FKM	
D	NUS.044	Shim	94.5 x 85.5 x 0.75		1

These positions are contained in the Cartridge mechanical seal as "loose parts".

For option component mechanical seal, see pos. 200-213

Bearing seal housing + accessories

Position 81-95

Pos.	Part number	Description	Dimensions	Notes	Rep.	92	130	184	260	368	390	520	736
81	PRS0789	Sleeve								2			
82	NLG.028.N1.T1	Cylindrical roller bearing	NU 2217E.TVP2.C3							2			
83	PGP.A018.T7	Bearing seal housing								1			
	PGP.A018.T8	Bearing seal housing		Option: intermediate flange									
	PGP0953	Bearing seal housing		Option: Alu									
84	NPF0003 *	Fitting key	A; 10 x 8 x 25	From 04/2009 up (shaft with positive lock)						2			
85	PRS0792 *	Spring pin		From 04/2009 up (shaft with inner ring pos. 92)						2			
	PRS0791*	Spring pin		Until 12/2008 (shaft without inner ring)									
86	PGP.A037	Bearing cover		Closed						2			
87	NSR.037	Multi-disc ring	72 x 4,1 x 0,82							2			
88	NTF.002	Spring washer	71 x 36 x 4	DIN 2039						6			
89	NSK.002	Hexagon head bolt	M10 x 35							4			
90	NUS.004	Washer	10,5 x 20 x 2	DIN 125						8			
91	PRS0766 *	Pressure disk								2			
92	NIR.021*	Inner ring		From 04/2009 up (shaft with inner ring)						2			

* For a production date of 01/2009 to 03/2009 for spare parts, please contact Vogelsang.

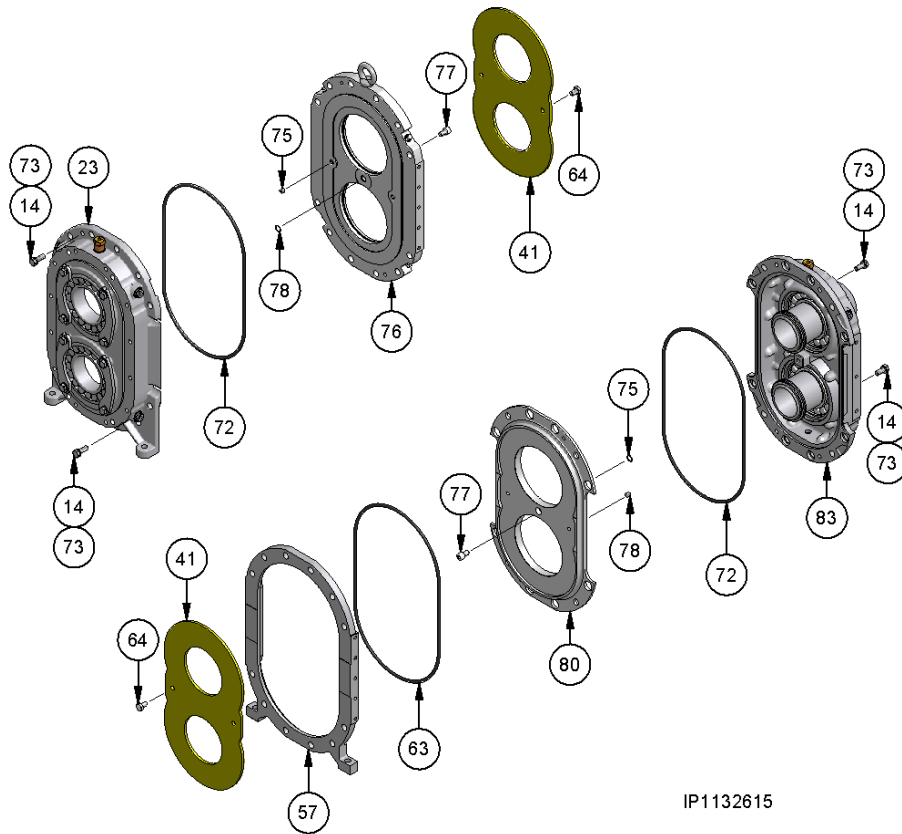
93	NSR.036	Retaining ring	AS 85 x 3	DIN 471						2			
94	PRS.A036	O-ring-carrier								2			
95	DOR.045	O-ring	92 x 4	NBR						2			
	DOR.045.VI	O-ring	92 x 4	FKM									

Accessories

Pos. 96-103

Pos.	Part number	Description	Dimensions	Notes	Rep.	92	130	184	260	368	390	520	736
96	PFL.A025	Lifting lug								1			
97	DOR.050	O-ring	150 x 3	NBR						2			
	DOR.050.VI	O-ring	150 x 3	FKM									
98	NSP.015	Dowel pin	16 x 36	DIN 7346						4			
102	NSK0106	Screw plug	M 30 x 1,5	DIN 910-1						2			
103	DKR0003	Copper ring	A; 30 x 36 x 2							2			

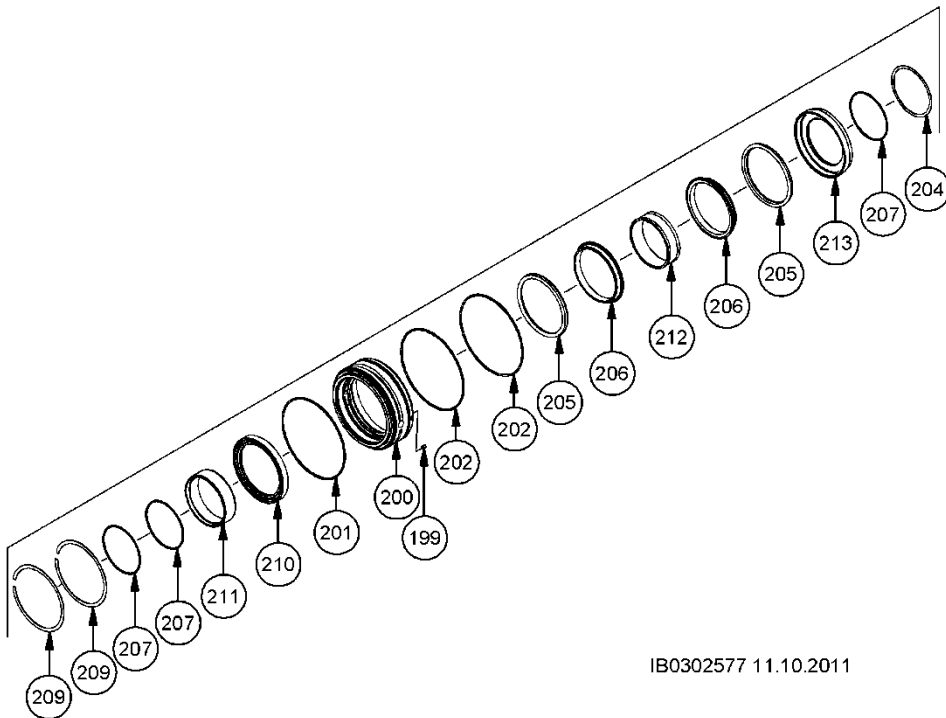
Option: Intermediate flange
Position 72-73 + 75-78 + 80



IP1132615

Pos.	Part number	Description	Dimensions	Notes	Rep.	92	130	184	260	368	390	520	736
72	DOR.052	O-ring	368 x 6	NBR						2			
	DOR.052.VI	O-ring	368 x 6	FKM									
73	NUS.004	Washer	A 10,5 x 20 x 2 mm	DIN 125						4			
75	NSK0145	Hexagon head bolt	M 10 x 10	DIN 933						4			
76	PGP.A021.N1	Intermediate flange								1			
	PFL.A021	Flame-cut part								1			
77	NSI.096.EE	Cylinder head bolt	M10 x 18	DIN 912						2			
78	DOR.040	O-ring	12 x 2	NBR						2			
	DOR.040.EP	O-ring	12 x 2	EPDM									
	DOR.040.VI	O-ring	12 x 2	FKM									
	DOR.040.PT	O-ring	12 x 2	Silicone FEP coated									
80	PGP.A021.N1.T1	Intermediate flange		1.0577						1			
	PFL.A021	Flame-cut part								1			

Option: Component mechanical seal
Pos. 200-213



IB0302577 11.10.2011

Pos.	Part number	Description	Dimensions	Notes	Rep.	Qty.
200	PRS.A026.N1.T1	Seal carrier		Seal		4
199	NGS.080.E	Hexagon socket set screw	M6 x 6	DIN 913		8
201	DOR.027	O-ring	144 x 3	NBR 70		4
	DOR.027.VI	O-ring	144,5 x 3	FKM		
202	DOR.027	O-ring	144 x 3	NBR		8
	DOR.027.EP	O-ring	144,5 x 3	EPDM		
	DOR.027.VI	O-ring	144,5 x 3	FKM		
	DOR.027.PT	O-ring	144 x 3	Silicone FEP-coated		
203	DOR.044	O-ring	85 x 2,5; NBR			12
	DOR.044.VI	O-ring	85 x 2,5; FKM			
204	NUS.044	Shim	94.5 x 85.5 x 0.75			4
205		For seal ring DGL.A013				8 4 ⁽⁸⁾
	DOR.033.HNB	O-ring	99 x 7,7	HNBR		
	DOR.033.VI	O-ring	99 x 7,7	FKM		
	DOR.033.SI	O-ring	99 x 7,7	Silicone; check resistance!		
		For seal ring DGL.A013.SC				
	DOR.091.HNB	O-ring	99 x 8	HNBR		
	DOR.091 EP	O-ring	99 x 8	EPDM		
	DOR.091 VI	O-ring	99 x 8	FKM		
DOR.091.SI	O-ring	99 x 8	Silicone; check resistance!			
206	DGL.A013	Seal ring		Duronit ⁽⁴⁾		8 4 ⁽⁸⁾
	DGL.A013.SC	Seal ring		Silicon carbide		
	DGL.A013.K	Seal ring		Carbon		



⁽⁴⁾ up to 10 bar [145 psi] real operating pressure
⁽⁸⁾ Quantity for block ring

Continuation see next page


Pos.	Part number	Description	Dimensions	Notes	Rep.	Qty.
209	NSR.028	Circlip	120 x 6 x 1			8
210	DWD.067	Radial shaft seal ring	95 x 120 x 12			4
211	PRS.A041	Rotating ring				4
212	PRS.A027	Distance ring				4
	PRS1640	Distance ring		For block ring		
213	PRS.A025.N2	Seal support				4
	DGL0031	Block ring				
	DGL0032	Block ring		Chrome oxide		

Tools



Pos.	Part number	Description	Dimensions	Notes	Rep.	92	130	184	260	368	390	520	736
	PBA.A001.T1	Lobe puller	92-260			x	x	x	x	-	-	-	-
	PBA.A001.T2	Lobe puller	368-390			-	-	-	-	x	x	-	-
	PBA.A001.T3	Lobe puller	520-736			-	-	-	-	-	-	x	x

	PBA.A011	Assembly tool		Radial shaft seal ring (DWD.049)						x			
	PBA.A012	Assembly tool		Inner ring (NIR.014)						x			
	PBA.A015	Assembly tool		Bearing seal housing (PGP.A018.T2)						x			

Cartridge mechanical seal:

	PBA0009	Tool set		Cartridge mechanical seal						x			
	WKZ0457	Disassembly tool Cartridge mechanical seal		Included in PBA0009						x			
	PBA.A014.T1	Tool		Included in WKZ0457						(1)			
	NSI.057	Cylinder head bolt	M 6 x 16							(2)			
	NSK.155	Hexagon nut	M 8 x 80							(3)			

Component mechanical seal:

	PBA.A010	Assembly tool		Mechanical seal ring support (PRS.A026.N1.T1)						x			
	PBA.A006.N1	Assembly tool		Mechanical seal (DGL.A013)						x			
	PBA.A033.T1	Multi-purpose tool	→ 92Q-260Q → 92QD	Cartridge mechanical seal + rotary lobe		x	-	-	-	-	-	-	-
	PBA.A033.T2	Multi-purpose tool	→ 130QD-368QD	Cartridge mechanical seal + rotary lobe		-	x	x	x	x	-	-	-

Material for connectors

Pos.	Part number	Description	Dimensions	Notes	Rep.	92	130	184	260	368	390	520	736
	NSK.001	Hexagon head bolt	M10 x 30	DIN 933		24	28	32	36	44	44	52	68
	NSK.004	Hexagon head bolt	M10 x 45	DIN 933 (high pressure)		24	28	32	36	44	44	52	68
	NUS.004	Washer	A 10,5 x 20 x 2	DIN 125		24	28	32	36	44	44	52	68
	PFL.120	Flange	92			2	-	-	-	-	-	-	-
	PFL.121	Flange	130			-	2	-	-	-	-	-	-
	PFL.122	Flange	184			-	-	2	-	-	-	-	-
	PFL.123	Flange	260			-	-	-	2	-	-	-	-
	PFL.139	Flange	368			-	-	-	-	2	-	-	-
	PFL.148	Flange	390			-	-	-	-	-	2	-	-
	PFL.136	Flange	520			-	-	-	-	-	-	2	-
	PFL.160	Flange	736			-	-	-	-	-	-	-	2
	DFD.070.P	Flange gasket	92			2	-	-	-	-	-	-	-
	DFD.071.P	Flange gasket	130			-	2	-	-	-	-	-	-
	DFD.072.P	Flange gasket	184			-	-	2	-	-	-	-	-
	DFD.073.P	Flange gasket	260			-	-	-	2	-	-	-	-
	DFD.074.P	Flange gasket	368			-	-	-	-	2	-	-	-
	DFD.104.P	Flange gasket	390			-	-	-	-	-	2	-	-
	DFD.088.P	Flange gasket	520			-	-	-	-	-	-	2	-
	DFD.105.P	Flange gasket	736			-	-	-	-	-	-	-	2

Required spare parts for rotary lobe change

Pos.	Part number	Description	Dimensions	Notes	Rep.	92	130	184	260	368	390	520	736
21	NPF.040	Fitting key	B 22 x 14 x 50	DIN 6885		2	-	-	-	-	-	-	-
	NPF.041	Fitting key	B 22 x 14 x 70	DIN 6885		-	-	-	-	-	2	-	-
	NPF.042	Fitting key	B 22 x 14 x 90	DIN 6885		-	2	-	-	-	-	-	-
	NPF.043	Fitting key	B 22 x 14 x 100	DIN 6885		-	-	-	-	2	-	4	4
	NPF.044	Fitting key	B 22 x 14 x 140	DIN 6885		-	-	2	-	-	4	4	4
	NPF.045	Fitting key	B 22 x 14 x 220	DIN 6885		-	-	-	2	2	-	-	2
51-54		Rotary lobe		See page 10 and following									
56	PRS.102	Strain bolt	M16							2			
63	DOR.052	O-ring	368 x 6	NBR									
	DOR.052.EP	O-ring	368 x 6	EPDM									
	DOR.052.VI	O-ring	368 x 6	FKM						1			
	DOR.052.PT	O-ring	368 x 6	Silicone FEP coated									
95	DOR.045	O-ring	92 x 4	NBR									
	DOR.045.VI	O-ring	92 x 4	FKM						2			

⁽⁵⁾ for solid material lobe

⁽⁹⁾ quantity for rotary lobe bi-lobe

Necessary spare parts for Cartridge mechanical seal change

Pos.	Part number	Description	Dimensions	Notes	Rep.	92	130	184	260	368	390	520	736
39	DOR.044	O-ring	85 x 2,5; NBR	QD cover									2
	DOR.044.VI	O-ring	85 x 2,5; FKM										
56	PRS.102	Strain bolt	M16										2
63	DOR.052	O-ring	368 x 6	NBR									1
	DOR.052.EP	O-ring	368 x 6	EPDM									
	DOR.052.VI	O-ring	368 x 6	FKM									
	DOR.052.PT	O-ring	368 x 6	Silicone FEP coated									
95	DOR.045	O-ring	92 x 4	NBR									2
	DOR.045.VI	O-ring	92 x 4	FKM									

Stahl nitriert

79	PBT.A002	Cartridge mechanical seal HD; single mechanical seal		WC/SiC, HNBR, HNBR										4
	PBT0450			WC/SiC, HNBR, FKM										
	PBT1716			WC/SiC, FKM, FKM										
	PBT.A004			Duronit ⁽⁴⁾ , HNBR, HNBR										
	PBT1718			Duronit ⁽⁴⁾ , FKM, FKM										
	PBT1720			WC/SiC, EPDM, FKM										
	PBT.A012	Cartridge mechanical seal Block ring single mechanical seal		WC/SiC, HNBR, HNBR										
	PBT0487			WC/SiC, HNBR, HNBR										
	PBT.A020			WC/SiC, HNBR, HNBR										
	PBT.A033			WC/SiC, HNBR, HNBR										
	PBT0195			WC/SiC, HNBR, HNBR										
	PBT0461			WC/SiC, HNBR, FKM										
	PBT0547			WC/SiC, FKM, FKM										
	PBT1706			WC/SiC, EPDM, FKM										
	PBT1709			SiC, FEPM, FKM										
	PBT1705			WC/SiC, FFKM, FKM										
	PBT1836			SiC, FFKM, PTFE										
	PBT.A014			Carbone / HNBR, NBR										
	PBT1698			Carbone / FKM, FKM										
	PBT1700			Carbone / EPDM, FKM										
	PBT.A021			CrO/Duronit ⁽⁴⁾ , HNBR, HNBR										
	PBT1014			Duronit ⁽⁴⁾ , HNBR, HNBR										
	PBT1903			Duronit ⁽⁴⁾ , HNBR, HNBR										
PBT1712		Duronit ⁽⁴⁾ , EPDM, FKM												
PBT0712		Duronit ⁽⁴⁾ , FKM, FKM												

⁽⁴⁾ up to 10 bar [145 psi] real operating pressure

Necessary spare parts for wear part replacement with Cartridge mechanical seal

Pos.	Part number	Description	Dimensions	Notes	Rep.	92	130	184	260	368	390	520	736
21	NPF.040	Fitting key	B 22 x 14 x 50	DIN 6885		2	-	-	-	-	-	-	-
	NPF.041	Fitting key	B 22 x 14 x 70	DIN 6885		-	-	-	-	-	2	-	-
	NPF.042	Fitting key	B 22 x 14 x 90	DIN 6885		-	2	-	-	-	-	-	-
	NPF.043	Fitting key	B 22 x 14 x 100	DIN 6885		-	-	-	-	2	-	4	4
	NPF.044	Fitting key	B 22 x 14 x 140	DIN 6885		-	-	2	-	-	4	4	4
	NPF.045	Fitting key	B 22 x 14 x 220	DIN 6885		-	-	-	2	2	-	-	2
39	DOR.044	O-ring	85 x 2,5; NBR	QD cover		2							
	DOR.044.VI	O-ring	85 x 2,5; FKM										
41	PFL.A017	Wear plate	6 mm	Tungsten carbide coated		2							
	PFL.A017.G1	Wear plate	6 mm										
	PFL.A017.T2	Wear plate	5,7 mm										
46	DAD.028	Flat gasket		Asbestos-free		4	4	4	4	6	6	6	10
51-54		Rotary lobe		See page 10 and following									
56	PRS.102	Strain bolt	M16			2							
63	DOR.052	O-ring	368 x 6	NBR		1							
	DOR.052.EP	O-ring	368 x 6	EPDM									
	DOR.052.VI	O-ring	368 x 6	FKM									
	DOR.052.PT	O-ring	368 x 6	Silicone FEP coated									
64	NSK.025.EE	Hexagon head bolt	M 10 x 16			4							
95	DOR.045	O-ring	92 x 4	NBR		2							
	DOR.045.VI	O-ring	92 x 4	FKM									
97	DOR.050	O-ring	150 x 3	NBR		2							
	DOR.050.VI	O-ring	150 x 3	FKM									

Continuation see next page

Pos.	Part number	Description	Dimensions	Notes	Rep.	92	130	184	260	368	390	520	736
------	-------------	-------------	------------	-------	------	----	-----	-----	-----	-----	-----	-----	-----

Stahl nitriert

79	PBT.A002	Cartridge mechanical seal HD; single mechanical seal		WC/SiC, HNBR, HNBR										
	PBT0450			WC/SiC, HNBR, FKM										
	PBT1716			WC/SiC, FKM, FKM										
	PBT.A004			Duronit ⁽⁴⁾ , HNBR, HNBR										
	PBT1718			Duronit ⁽⁴⁾ , FKM, FKM										
	PBT1720			WC/SiC, EPDM, FKM										
	PBT.A012	Cartridge mechanical seal Block ring single mechanical seal		WC/SiC, HNBR, HNBR										
	PBT0487			WC/SiC, HNBR, HNBR										
	PBT.A020			WC/SiC, HNBR, HNBR										
	PBT.A033			WC/SiC, HNBR, HNBR										
	PBT0195			WC/SiC, HNBR, HNBR										
	PBT0461			WC/SiC, HNBR, FKM										
	PBT0547			WC/SiC, FKM, FKM										
	PBT1706			WC/SiC, EPDM, FKM										
	PBT1709			SiC, FEPM, FKM										
	PBT1705			WC/SiC, FFKM, FKM										
	PBT1836			SiC, FFKM, PTFE										
	PBT.A014			Carbone / HNBR, NBR										
	PBT1698			Carbone / FKM, FKM										
	PBT1700			Carbone / EPDM, FKM										
	PBT.A021			CrO/Duronit ⁽⁴⁾ , HNBR, HNBR										
	PBT1014			Duronit ⁽⁴⁾ , HNBR, HNBR										
	PBT1903			Duronit ⁽⁴⁾ , HNBR, HNBR										
	PBT1712			Duronit ⁽⁴⁾ , EPDM, FKM										
	PBT0712			Duronit ⁽⁴⁾ , FKM, FKM										

4

⁽⁴⁾ up to 10 bar [145 psi] real operating pressure

Necessary spare parts for component mechanical seal change

Pos.	Part number	Description	Dimensions	Notes	Rep.	92	130	184	260	368	390	520	736
39	DOR.044	O-ring	85 x 2,5; NBR	QD cover									2
	DOR.044.VI	O-ring	85 x 2,5; FKM										
56	PRS.102	Strain bolt	M16										2
63	DOR.052	O-ring	368 x 6	NBR									1
	DOR.052.EP	O-ring	368 x 6	EPDM									
	DOR.052.VI	O-ring	368 x 6	FKM									
	DOR.052.PT	O-ring	368 x 6	Silicone FEP coated									
95	DOR.045	O-ring	92 x 4	NBR									2
	DOR.045.VI	O-ring	92 x 4	FKM									

Component mechanical seal:

Pos.	Part number	Description	Dimensions	Notes	Rep.	Qty.
201	DOR.027	O-ring	144 x 3	NBR 70		4
	DOR.027.VI	O-ring	144,5 x 3	FKM		
202	DOR.027	O-ring	144 x 3	NBR		8
	DOR.027.EP	O-ring	144,5 x 3	EPDM		
	DOR.027.VI	O-ring	144,5 x 3	FKM		
	DOR.027.PT	O-ring	144 x 3	Silicone FEP-coated		
203	DOR.044	O-ring	85 x 2,5; NBR			12
	DOR.044.VI	O-ring	85 x 2,5; FKM			
204	NUS.044	Shim	94.5 x 85.5 x 0.75			4
205		For seal ring DGL.A013				8 4 ⁽⁸⁾
	DOR.033.HNB	O-ring	99 x 7,7	HNBR		
	DOR.033.VI	O-ring	99 x 7,7	FKM		
	DOR.033.SI	O-ring	99 x 7,7	Silicone; check resistance!		
		For seal ring DGL.A013.SC				
	DOR.091.HNB	O-ring	99 x 8	HNBR		
	DOR.091 EP	O-ring	99 x 8	EPDM		
	DOR.091 VI	O-ring	99 x 8	FKM		
DOR.091.SI	O-ring	99 x 8	Silicone; check resistance!			
206	DGL.A013	Seal ring		Duronit ⁽⁴⁾		8 4 ⁽⁸⁾
	DGL.A013.SC	Seal ring		Silicon carbide		
	DGL.A013.K	Seal ring		Carbon		

⁽⁴⁾ up to 10 bar [145 psi] real operating pressure

⁽⁸⁾ Quantity for block ring

Necessary spare parts for wear part replacement with component mechanical seal

Pos.	Part number	Description	Dimensions	Notes	Rep.	92	130	184	260	368	390	520	736
21	NPF.040	Fitting key	B 22 x 14 x 50	DIN 6885		2	-	-	-	-	-	-	-
	NPF.041	Fitting key	B 22 x 14 x 70	DIN 6885		-	-	-	-	-	2	-	-
	NPF.042	Fitting key	B 22 x 14 x 90	DIN 6885		-	2	-	-	-	-	-	-
	NPF.043	Fitting key	B 22 x 14 x 100	DIN 6885		-	-	-	-	2	-	4	4
	NPF.044	Fitting key	B 22 x 14 x 140	DIN 6885		-	-	2	-	-	4	4	4
	NPF.045	Fitting key	B 22 x 14 x 220	DIN 6885		-	-	-	2	2	-	-	2
39	DOR.044	O-ring	85 x 2,5; NBR	QD cover		2							
	DOR.044.VI	O-ring	85 x 2,5; FKM										
41	PFL.A017	Wear plate	6 mm	Tungsten carbide coated		2							
	PFL.A017.G1	Wear plate	6 mm										
	PFL.A017.T2	Wear plate	5,7 mm										
46	DAD.028	Flat gasket		Asbestos-free		4	4	4	4	6	6	6	10
51-54		Rotary lobe		See page 10 and following									
56	PRS.102	Strain bolt	M16			2							
63	DOR.052	O-ring	368 x 6	NBR		1							
	DOR.052.EP	O-ring	368 x 6	EPDM									
	DOR.052.VI	O-ring	368 x 6	FKM									
	DOR.052.PT	O-ring	368 x 6	Silicone FEP coated									
64	NSK.025.EE	Hexagon head bolt	M 10 x 16			4							
95	DOR.045	O-ring	92 x 4	NBR		2							
	DOR.045.VI	O-ring	92 x 4	FKM									
97	DOR.050	O-ring	150 x 3	NBR		2							
	DOR.050.VI	O-ring	150 x 3	FKM									

Component mechanical seal:

Pos.	Part number	Description	Dimensions	Notes	Rep.	Qty.
201	DOR.027	O-ring	144 x 3	NBR 70		4
	DOR.027.VI	O-ring	144,5 x 3	FKM		
202	DOR.027	O-ring	144 x 3	NBR		8
	DOR.027.EP	O-ring	144,5 x 3	EPDM		
	DOR.027.VI	O-ring	144,5 x 3	FKM		
	DOR.027.PT	O-ring	144 x 3	Silicone FEP-coated		
203	DOR.044	O-ring	85 x 2,5; NBR			12
	DOR.044.VI	O-ring	85 x 2,5; FKM			
204	NUS.044	Shim	94.5 x 85.5 x 0.75			4
205		For seal ring DGL.A013				8 4 ⁽⁸⁾
	DOR.033.HNB	O-ring	99 x 7,7	HNBR		
	DOR.033.VI	O-ring	99 x 7,7	FKM		
	DOR.033.SI	O-ring	99 x 7,7	Silicone; check resistance!		
		For seal ring DGL.A013.SC				
	DOR.091.HNB	O-ring	99 x 8	HNBR		
	DOR.091 EP	O-ring	99 x 8	EPDM		
	DOR.091 VI	O-ring	99 x 8	FKM		
DOR.091.SI	O-ring	99 x 8	Silicone; check resistance!			
206	DGL.A013	Seal ring		Duronit ⁽⁴⁾		8 4 ⁽⁸⁾
	DGL.A013.SC	Seal ring		Silicon carbide		
	DGL.A013.K	Seal ring		Carbon		

⁽⁴⁾ up to 10 bar [145 psi] real operating pressure

⁽⁸⁾ Quantity for block ring



Vogelsang GmbH & Co. KG

Holthöge 10-14
49632 Essen/Oldb.

Phone: +49 (0) 54 34 83 0

Fax: +49 (0) 54 34 83 10

www.vogelsang.info
info@vogelsang.info

