



# Spare Parts List

RotaCut®

RCQ-26G

ENGINEERED TO WORK



**Issuer**

Hugo Vogelsang Maschinenbau GmbH  
Holthöge 10-14  
49632 Essen/Oldb.

Phone: +49 54 34 83 0  
Fax: +49 54 34 83 10

vogelsang-gmbh.com  
info@vogelsang-gmbh.com

In the absence of express, written authorisation from the issuer, the reproduction or partial reproduction of this document in any form is prohibited.

We reserve the right to make technical modifications to the diagrams and information presented in this document in the event that such modifications become necessary for the enhancement of the machine.

© 2016 Hugo Vogelsang Maschinenbau GmbH

**Registered trademarks of Vogelsang**

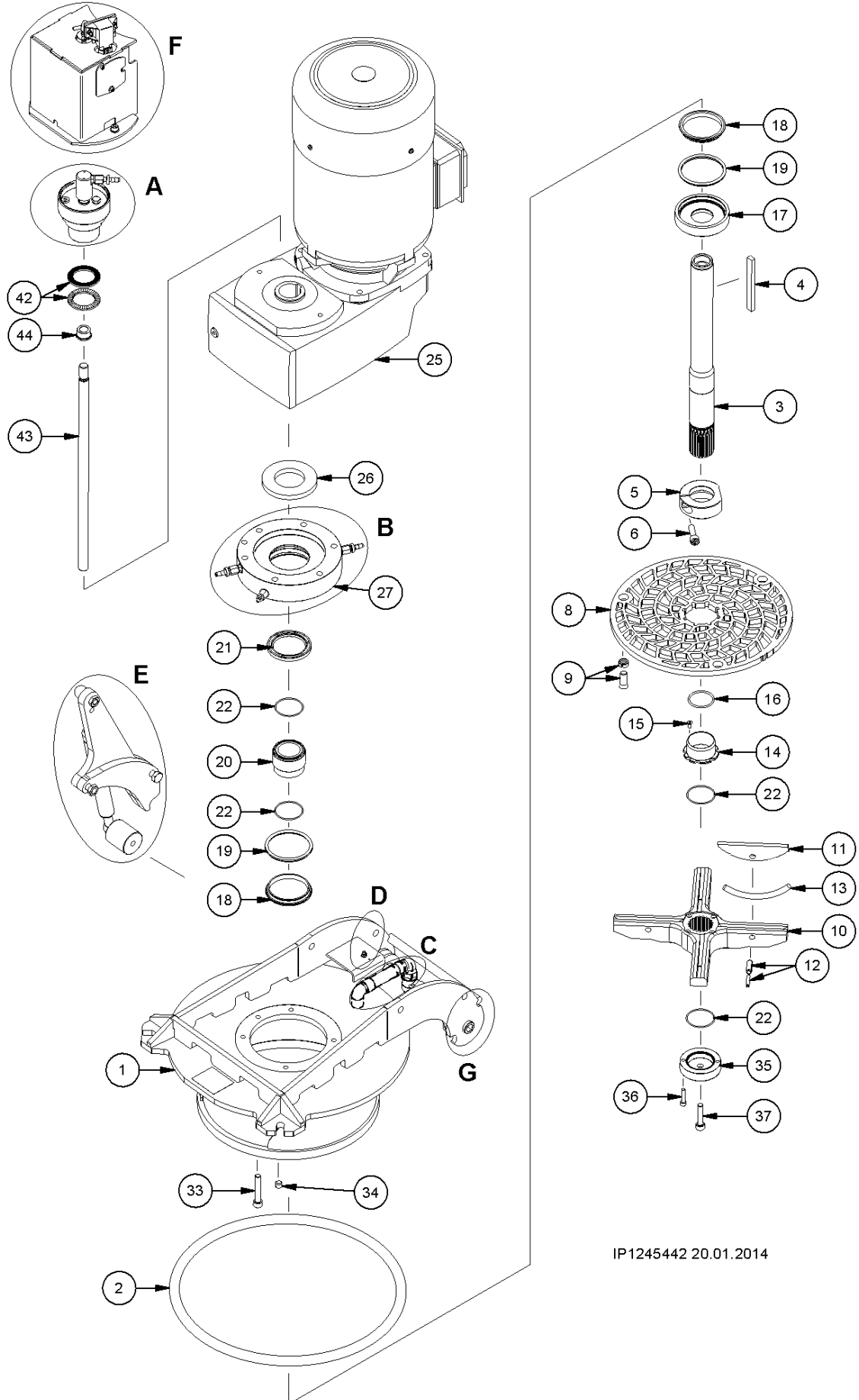
Vogelsang, RotaCut, PreMix, HiFlo, ACC, CFC, BioCrack, XTill, EnergyJet, BioCut, CC series, PreMix, ProTerra and VarioCrop are registered trademarks of Hugo Vogelsang Maschinenbau GmbH.

The registered trademarks are not always designated with an ® symbol in this document.

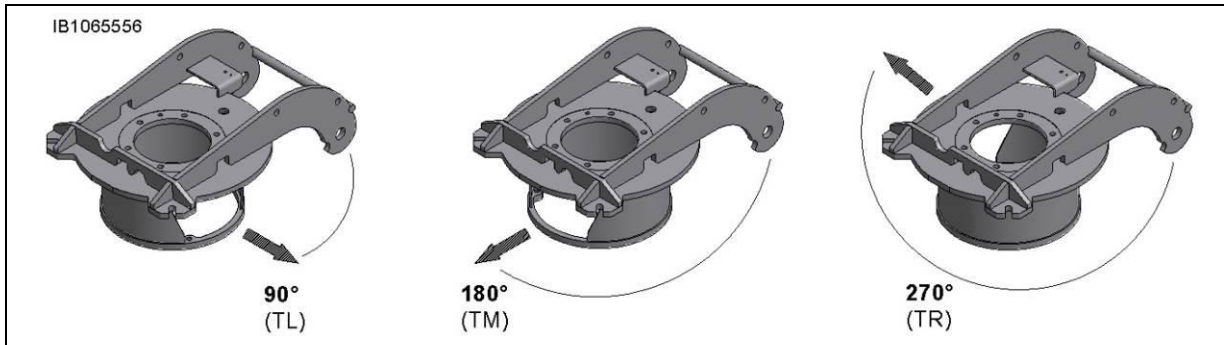
**Contents**

<b>Figure: Cutter head</b> .....	<b>4</b>
<b>Cutter head</b> .....	<b>5</b>
Position 1.....	5
<b>O-ring cutter head</b> .....	<b>5</b>
Position 2.....	5
<b>Shaft</b> .....	<b>5</b>
Position 3-6.....	5
<b>Option: External gap sealing</b> .....	<b>6</b>
<b>Cutting screen</b> .....	<b>7</b>
Position 8-9.....	7
<b>Blade rotor</b> .....	<b>7</b>
Position 10-13.....	7
<b>Accessories cutting screen</b> .....	<b>7</b>
Position 14-16.....	7
<b>Mechanical seal</b> .....	<b>8</b>
Position 17-23.....	8
<b>Geared motor</b> .....	<b>8</b>
Position 25-26.....	8
<b>Adapter geared motor</b> .....	<b>8</b>
<b>Detail B</b> .....	<b>8</b>
Position 27-31.....	8
<b>Accessories</b> .....	<b>9</b>
Position 33-37.....	9
<b>Ball valve</b> .....	<b>9</b>
<b>Detail C</b> .....	<b>9</b>
Position 39-40.....	9
<b>Pull rod</b> .....	<b>9</b>
Position 42-44.....	9
<b>ACC piston and cylinder</b> .....	<b>10</b>
<b>Detail A</b> .....	<b>10</b>
Position 45-57.....	10
<b>Figure: ACC pressure transmission unit</b> .....	<b>11</b>
<b>ACC pressure transmission unit</b> .....	<b>12</b>
Pos. 58-83.....	12
<b>Holder pressure transmission unit</b> .....	<b>13</b>
Position 84-88.....	13
<b>Pot</b> .....	<b>14</b>
Position 90.....	14
<b>INLINE</b> .....	<b>14</b>
<b>Cyclone separator</b> .....	<b>15</b>
<b>Blind flange + accessories</b> .....	<b>16</b>
Position 91-95.....	16
<b>6 inch</b> .....	<b>16</b>
<b>Adaptor flange DIN/ANSI</b> .....	<b>17</b>
Position 100-107.....	17
<b>Safety switch</b> .....	<b>18</b>
<b>Detail D</b> .....	<b>18</b>
Position 115-118.....	18
<b>Gas spring</b> .....	<b>19</b>
<b>Detail E</b> .....	<b>19</b>
Position 127-135.....	19
<b>Pivot</b> .....	<b>20</b>
<b>Detail G</b> .....	<b>20</b>
Position 136-140.....	20
<b>ACC protective cover</b> .....	<b>21</b>
<b>Detail F</b> .....	<b>21</b>
Position 141-158.....	21
<b>Clamping fastener</b> .....	<b>22</b>
<b>Detail H</b> .....	<b>22</b>
Position 160-164.....	22
<b>Buffer fluid tank</b> .....	<b>22</b>
Pos. 179-190.....	22
<b>Safety sticker</b> .....	<b>23</b>
<b>Operating material</b> .....	<b>24</b>
<b>Tools</b> .....	<b>24</b>
<b>Required spare parts for mechanical seal change</b> .....	<b>25</b>
<b>Necessary spare parts for blade change</b> .....	<b>25</b>
<b>Required spare parts for wear part replacement</b> .....	<b>26</b>

Figure: Cutter head



IP1245442 20.01.2014



**Cutter head**

**Position 1**

Pos.	Part number	Description	Dimensions	Notes	Rep.	S <sup>(a)</sup>	E <sup>(a)</sup>	L <sup>(a)</sup>
<b>1.0038 galvanised</b>								
1	GSK0150	Cutter head	180° (TM)			1	-	-
	GSK0153	Cutter head	90° (TL)					
	GSK0154	Cutter head	270° (TR)					
<b>1.4571</b>								
1	GSK0152	Cutter head	180° (TM)			-	1	-
<b>1.0038 painted</b>								
1	GSK0151	Cutter head	180° (TM)			-	-	1

**O-ring cutter head**

**Position 2**

Pos.	Part number	Description	Dimensions	Notes	Rep.	S <sup>(a)</sup>	E <sup>(a)</sup>	L <sup>(a)</sup>
2	DOR.073	O-ring	320 x 18	NBR		1		
	DOR.073.SI	O-ring	320 x 18	MVQ				

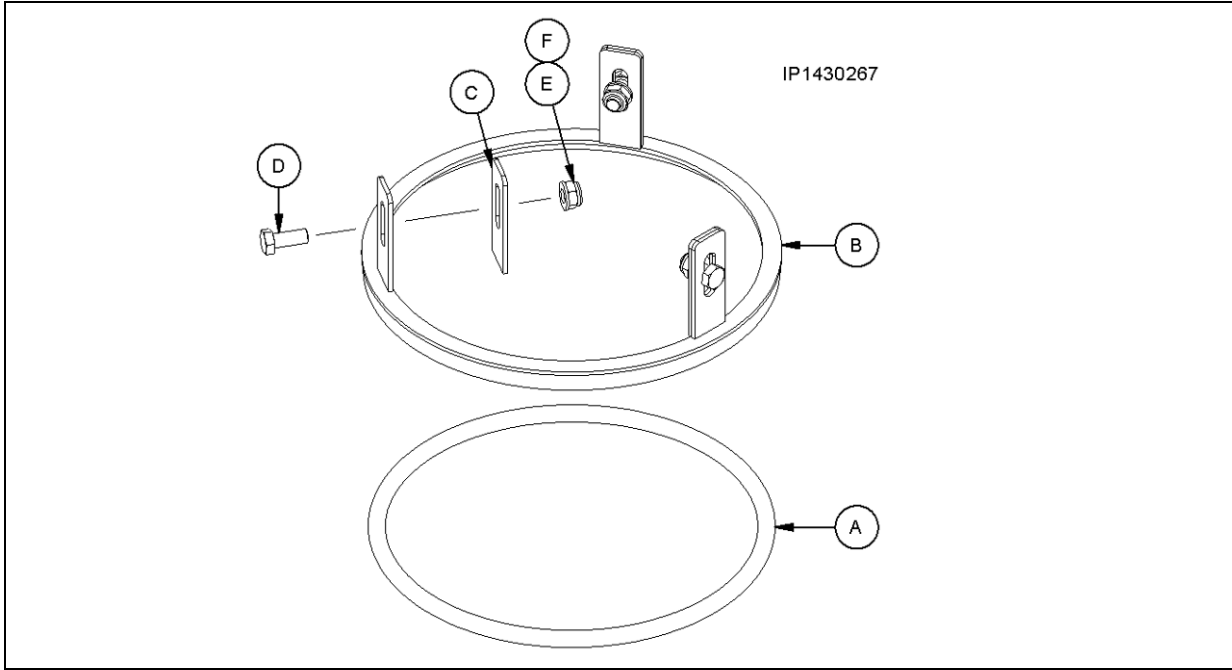
**Shaft**

**Position 3-6**

Pos.	Part number	Description	Dimensions	Notes	Rep.	S <sup>(a)</sup>	E <sup>(a)</sup>	L <sup>(a)</sup>
3	GSW0017	Drive shaft				1	1	1
4	NPF0008	Fitting key	B 12 x 8 x 120	DIN 6885		1	1	1
5	GAS0223	Gap seal				1	1	1
6	NSI.008	Cylinder head bolt	M 10 x 35	ISO 4762		1	1	1

(a Design: S = steel, galvanised; E = stainless steel; L = steel, painted

**Option: External gap sealing**



Pos.	Part number	Description	Dimensions	Notes	Rep.	S <sup>(a)</sup>	E <sup>(a)</sup>	L <sup>(a)</sup>
	GAS.013.T1	External gap sealing		Steel		1	-	1
	GAS.013.T1.E	External gap sealing		Stainless steel		-	1	
A	DOR.131	O-ring	Ø 260 mm x 12 mm				1	
B	GVE.001.T1	Welded assembly		1.0038		1	-	1
	GVE.001.T1.E	Welded assembly		1.4571		-	1	
C	GFL.548.T1	Bracket		1.0038		3	-	3
	LFL.548.T1.E	Bracket		1.4571		-	3	
D	NSK.027	Hexagon head bolt	M 10 x 25			3	-	3
	NSK.027.EE	Hexagon head bolt	M 10 x 25			-	3	
E	NMK.001	Hexagon nut	M 10			3	-	3
	NMK.001.EE	Hexagon nut	M 10			-	3	
F	NUS.004	Washer	A 10,5 x 20 x 2			3	-	3
	NUS.004	Washer	A 10,5 x 20 x 2			-	3	

(a Design: S = steel, galvanised; E = stainless steel; L = steel, painted

**Cutting screen****Position 8-9**

Pos.	Part number	Description	Dimensions	Notes	Rep.	S <sup>(a)</sup>	E <sup>(a)</sup>	L <sup>(a)</sup>
<b>Steel</b>								
8	GFL.427.N3.M9	Cutting screen	Max. ø 20 mm	Medium; t = 12 mm		1	-	1
	GFL0035	Cutting screen	Max. ø 28 mm	Coarse				
	GFL.546.M9	Cutting screen	Max. ø 4 mm	Honey comb				
	GFL.570.M9	Cutting screen	Max. ø 8 mm	Honey comb				
	GFL.480.M9	Cutting screen	Max. ø 12 mm	Honey comb				
	GFL.449.M9	Cutting screen	Max. ø 15 mm	Honey comb				
<b>Stainless steel</b>								
8	GFL.427.N3.E3	Cutting screen	Max. ø 20 mm	Standard		(1)	1	(1)
	GFL.495.N1.E3	Cutting screen	Max. ø 28 mm	Coarse				
	GFL.546.E3	Cutting screen	Max. ø 4 mm	Honey comb				
	GFL.570.E3	Cutting screen	Max. ø 8 mm	Honey comb				
	GFL.480.E3	Cutting screen	Max. ø 12 mm	Honey comb				
	GFL.449.E3	Cutting screen	Max. ø 15 mm	Honey comb				
		Max. ø = max. free passage						
9	GRS.203.EE	Clamp bolt				3	3	3
	GRS.202	Spring pin				3	-	3
	GRS.202.EE	Spring pin				-	3	-

**Blade rotor****Position 10-13**

Pos.	Part number	Description	Dimensions	Notes	Rep.	S <sup>(a)</sup>	E <sup>(a)</sup>	L <sup>(a)</sup>
10	GFM0023	Blade rotor		4-wing; 8 mm		1	1	1
11	GSM.006.T1.E4	Blade	8 mm	Hoch		4	4	4
12	NSP.030.E	Spring pin	10 x 30			4	4	4
	NSP.031.E	Spring pin	6 x 30			4	4	4
13	ZDFD.390.0110	Polyethylene cord				4	4	4

**Accessories cutting screen****Position 14-16**

Pos.	Part number	Description	Dimensions	Notes	Rep.	S <sup>(a)</sup>	E <sup>(a)</sup>	L <sup>(a)</sup>
14	GRS0291	Sleeve		Shaft-Rotor		1	1	1
15	NSE.019	Countersunk head bolt	M 5 x 12	DIN 7991		4	4	4
16	DOR0116	O-ring	40 x 3	NBR		1	1	1
	DOR0243	O-ring	40 x 3	MVQ				

(a Design: S = steel, galvanised; E = stainless steel; L = steel, painted

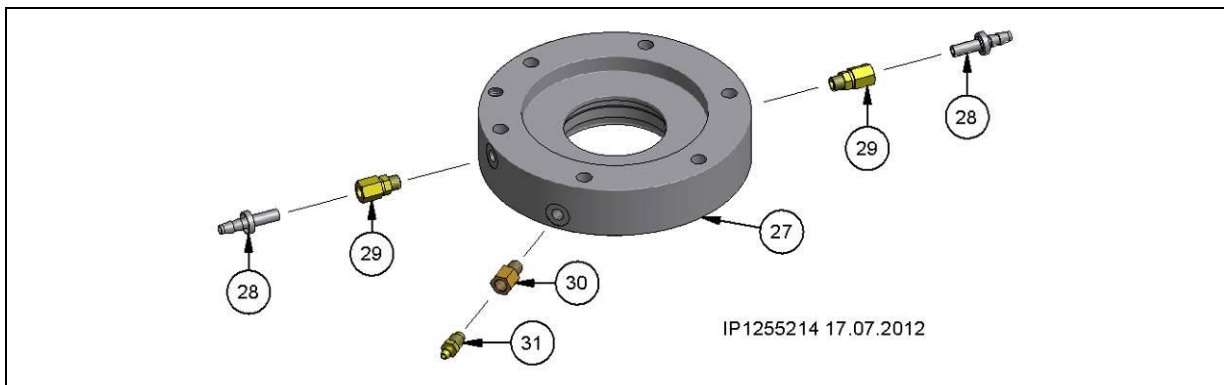
**Mechanical seal**  
**Position 17-23**

Pos.	Part number	Description	Dimensions	Notes	Rep.	S <sup>(a)</sup>	E <sup>(a)</sup>	L <sup>(a)</sup>
17	GRS0245	Mechanical seal ring receptacle				1	1	1
18	DGL.B012	Mechanical seal ring		Duronit			2	
19	DOR.034.HNB	O-ring	72.5 x 6.5	HNBR			2	
	DOR.034.SI	O-ring	72.5 x 6.5	MVQ				
20	IBA1242	Inner ring unit	JR 55 x 60 x 25				1	
21	DWD0047	Radial shaft seal ring	WAY 80 x 60 x 7				1	
22	DOR.160	O-ring	48 x 2; NBR	Inner ring unit			2	
	DOR0132	O-ring	48 x 2; MVQ					
22	DOR.160	O-ring	48 x 2; NBR	Blade rotor cover + sleeve			2	
	DOR0132	O-ring	48 x 2; MVQ					

**Geared motor**  
**Position 25-26**

Pos.	Part number	Description	Dimensions	Notes	Rep.	S <sup>(a)</sup>	E <sup>(a)</sup>	L <sup>(a)</sup>
25	AGM1523	Parallel shaft geared motor		2,2 kW; 72 min <sup>-1</sup>			1	
	AGM1524	Parallel shaft geared motor		3,0 kW; 171 min <sup>-1</sup>				
	AGM1553	Parallel shaft geared motor		3,0 kW; 248 min <sup>-1</sup>				
	AGM1525	Parallel shaft geared motor		4,0 kW; 215 min <sup>-1</sup>				
	AGM1526	Parallel shaft geared motor		5,5 kW; 254 min <sup>-1</sup>				
	AGM1527	Parallel shaft geared motor		5,5 kW; 326 min <sup>-1</sup>				
26	DWD0048	Radial shaft seal ring	AS; 55 x 100 x 10	Included in parallel shaft geared motor			(1)	
	DWD0049	Radial shaft seal ring	A; 55 x 100 x 10				(1)	

**Adapter geared motor**  
**Detail B**



**Position 27-31**

Pos.	Part number	Description	Dimensions	Notes	Rep.	S <sup>(a)</sup>	E <sup>(a)</sup>	L <sup>(a)</sup>
27	GRS0249	Adapter		1.0038		1	-	1
	GRS0279	Adapter		1.4571		-	1	-
28	NGE.120	Plug nipple	DN 6			2	2	2
29	NGE.058	Screw-in fitting	8 LL - M 10 x 1			2	2	2
30	GRS.207	Screw-connection adaptor	M 10 x 1			1	1	1
31	NLV.001	Vent valve				1	1	1

(a Design: S = steel, galvanised; E = stainless steel; L = steel, painted



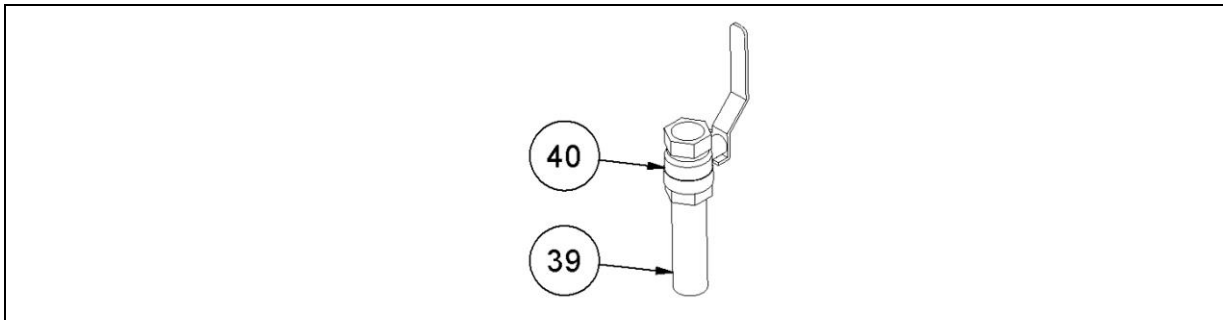
**Accessories**

**Position 33-37**

Pos.	Part number	Description	Dimensions	Notes	Rep.	S <sup>(a)</sup>	E <sup>(a)</sup>	L <sup>(a)</sup>
33	NSI.019	Cylinder head bolt	M 10 x 60	ISO 4762		6	-	6
	NSI0091	Cylinder head bolt	M 10 x 60	ISO 4762; A4		-	6	-
34	NGS.100	Hexagon socket set screw	M 10 x 8	DIN 913		1	-	1
	NGS.100.EE	Hexagon socket set screw	M 10 x 8	DIN 913; A4		-	1	-
35	GRS0296	Blade rotor cover				1	1	1
36	NSI0101	Cylinder head screw	M 6 x 35	ISO 4762		2	2	2
37	NSI.119	Cylinder head screw	M 10 x 45	ISO 4762		1	1	1

**Ball valve**

**Detail C**



**Position 39-40**

Pos.	Part number	Description	Dimensions	Notes	Rep.	S <sup>(a)</sup>	E <sup>(a)</sup>	L <sup>(a)</sup>
39	HRS0285	Pipe double nipple	3/4 inch x 120 mm			1	-	1
	HRS0286	Pipe double nipple	3/4 inch x 120 mm	1.4571		-	1	-
40	GHN.013	Ball valve	3/4 inch				1	

**Pull rod**

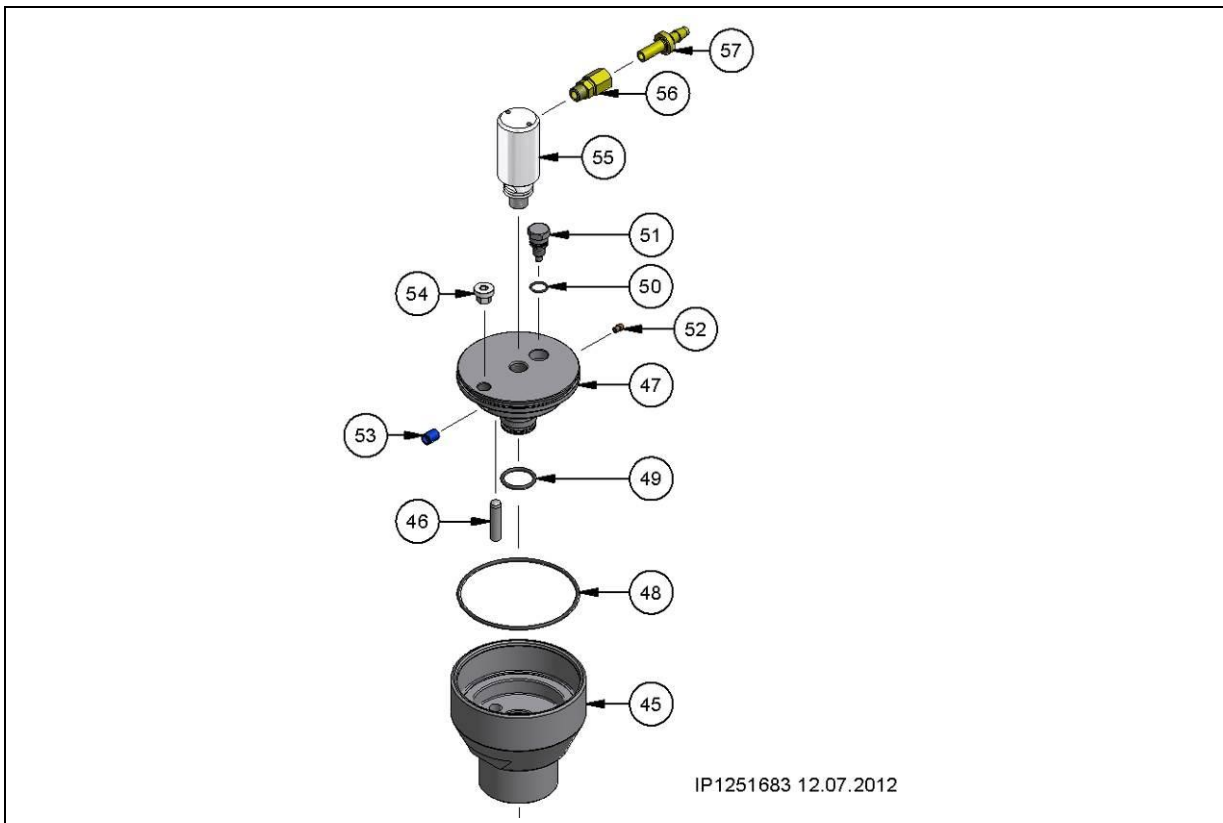
**Position 42-44**

Pos.	Part number	Description	Dimensions	Notes	Rep.	S <sup>(a)</sup>	E <sup>(a)</sup>	L <sup>(a)</sup>
42	NUS0026	Lock washer				1	1	1
43	GRS0290	Pull rod				1	1	1
44	GRS0248	Safety bushing				1	1	1

(a Design: S = steel, galvanised; E = stainless steel; L = steel, painted

### ACC piston and cylinder

Detail A

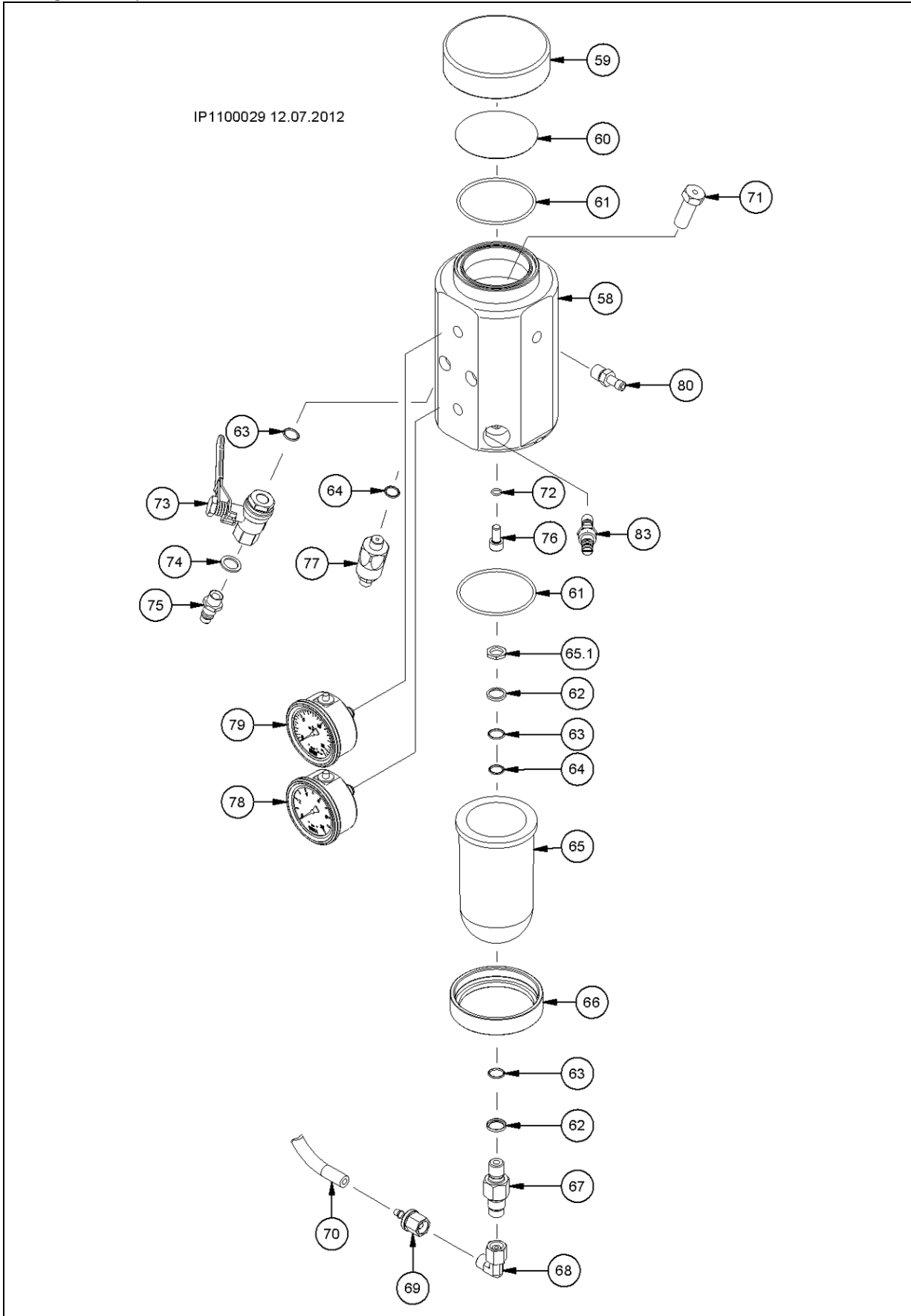


Position 45-57

Pos.	Part number	Description	Dimensions	Notes	Rep.	S <sup>(a)</sup>	E <sup>(a)</sup>	L <sup>(a)</sup>
	GRT00080	ACC complete		Pos. 45-57			(1)	
45	GRS0250	ACC cylinder					1	
45-54	GRT0079	ACC piston preassembled					(1)	
46	NSZ.006	Dowel pin	M 6 x 32	ISO 8734			1	
47	GRS0251	ACC piston					1	
48	DOR.039	O-ring	80 x 2.5				1	
49	DOR.103	O-ring	20 x 2.5				1	
50	DOR.115	O-ring	10 x 1.5				1	
51	GRS0165	Bypass screw					1	
52	GRS.146	Throttle	M 4 x 7				1	
53	PSV.006	Check valve					1	
54	NSK0005	Screw plug	M 10 x 1				1	
55	NDD0001	Rotary joint	¼ inch				1	
56	NGE.058	Coupling	M 10 x 1				1	
57	NGE.120	Plug nipple	DN6				1	

(a Design: S = steel, galvanised; E = stainless steel; L = steel, painted

Figure: ACC pressure transmission unit

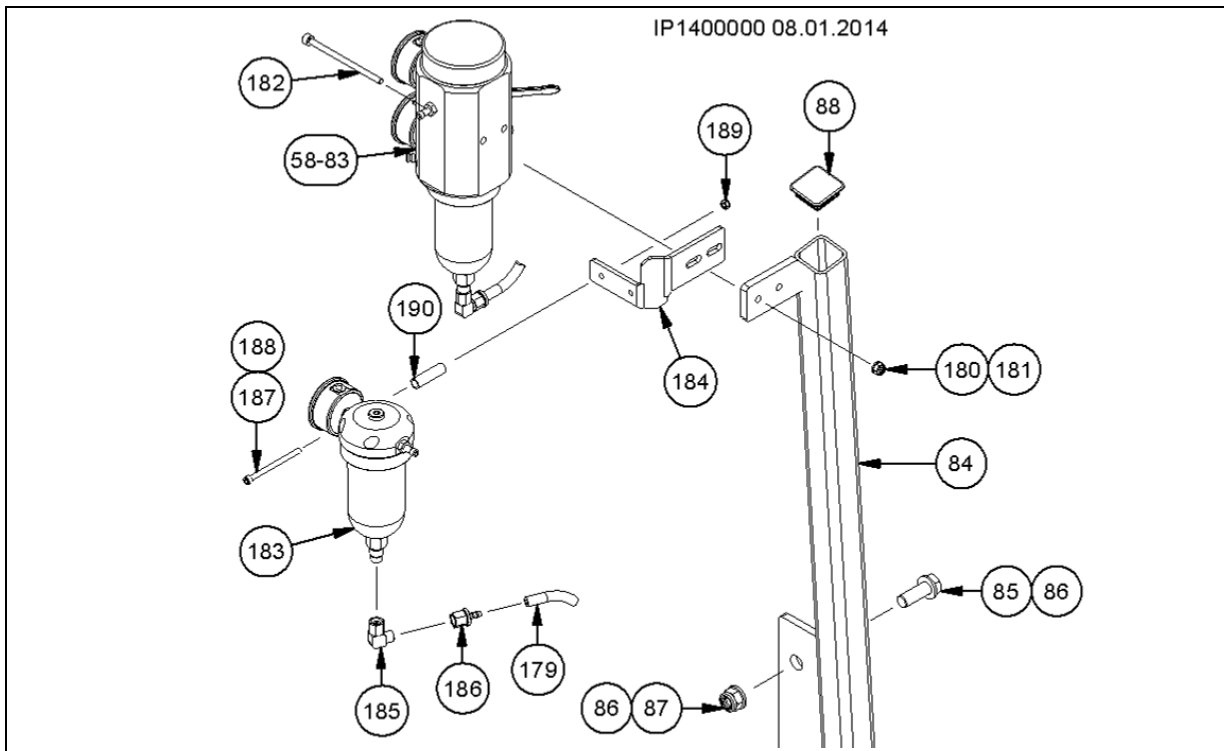


**ACC pressure transmission unit**  
Pos. 58-83

Pos.	Part number	Description	Dimensions	Notes	Rep.	S <sup>(a)</sup>	E <sup>(a)</sup>	L <sup>(a)</sup>
	<b>GRT0060</b>	<b>Pressure transmission unit</b>		Includes pos. 58-83				
58	GRS0195	Housing					1	
59	GRS0171	Cover					1	
60	RFL3683	Sealing plate					1	
61	DOR.147	O-ring	68 x 3	NBR			2	
62	NDR.001	Support ring	M12				2	
63	DOR.040	O-ring	12 x 2				2	
64	DOR.104	O-ring	11 x 1.5				3	
65	AHA.027	Oil tank					1	
65.1	NMS0014	Flat nut	M14 x 1				1	
66	NGE0076	Threaded ring					1	
67	PRS0033	Coupling					1	
68	NGE.086	Elbow coupling	EEL 08L				1	
69	NVR.003	Seal bonnet	DKL, DN6				1	
70	HKU0013	Hose	DN 6 x 1100 mm				1	
71	PRS0397	Hollow screw	¼ inch				1	
72	DOR.128	O-ring	7.5 x 1.5				1	
73	GHN.057	Ball valve	¼"				1	
74	DKR.006	Sealing ring	A 14 x 20 x 1.5	DIN 7603			1	
75	NGE.088	Pneumatic plug nipple					1	
76	NSI0023	Cylinder head bolt	M8 x 16				1	
77	SDS0003	Normally closed contact for pressure control switch	24 V	1 to 10 bar			1	
	EKT0012	Plug with cable (5 m)	M12				1	
78	SMD.049	Pressure gauge		0 to 10 bar			1	
79	SMD0029	Pressure gauge		0 to 16 bar			1	
80	NGE0109	Screwed valve					1	
83	APV0022	Pressure regulator hollow screw	G1/8	1-8 bar			1	
	AHP.002	Manual air pump					1	

(a Design: S = steel, galvanised; E = stainless steel; L = steel, painted

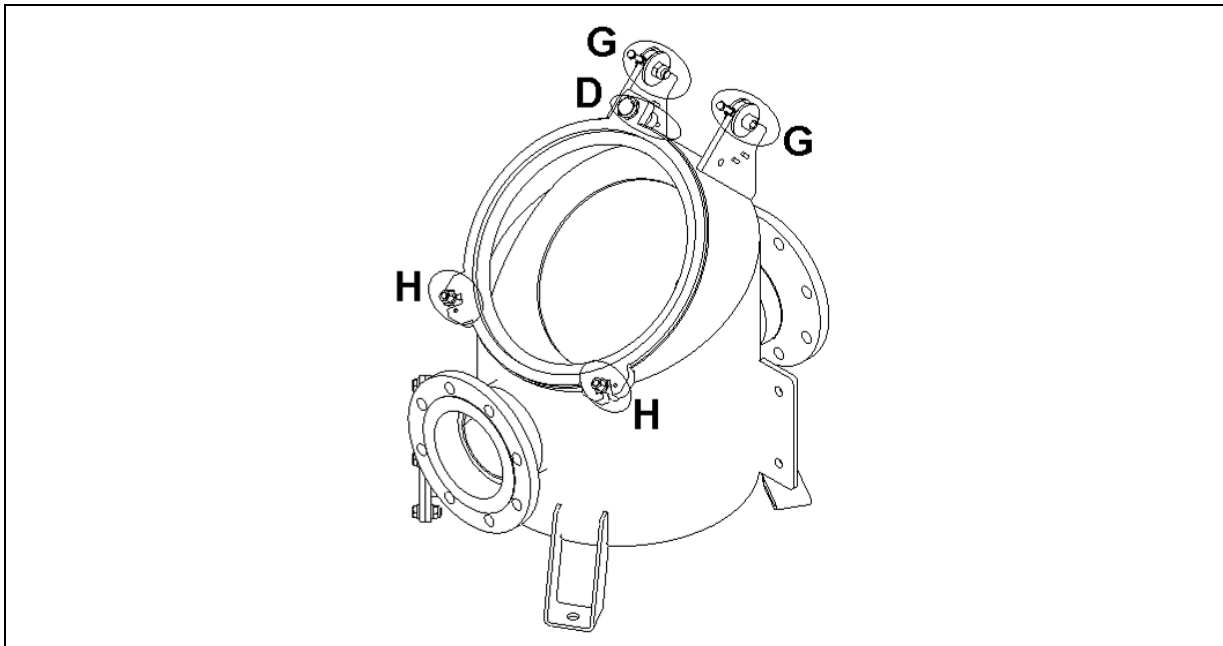
**Holder pressure transmission unit**  
Position 84-88



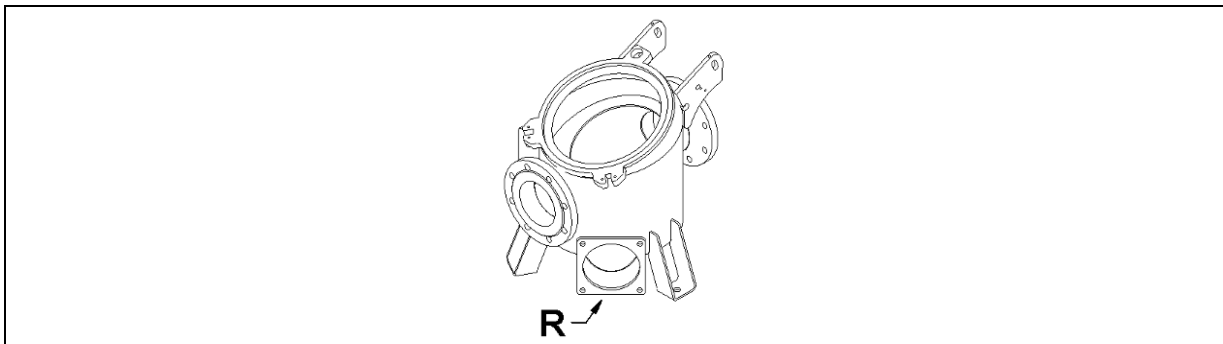
Pos.	Part number	Description	Dimensions	Notes	Rep.	S <sup>(a)</sup>	E <sup>(a)</sup>	L <sup>(a)</sup>
84	RCS0108	Holder		1.0038 galvanised		1	-	-
	RCS0109	Holder		1.4571		-	1	-
	RCS0140	Holder		1.0038 painted		-	-	1
85	NSK.054	Hexagon head bolt	M 16 x 45	DIN 933		2	-	2
	NSK.054.EE	Hexagon head bolt	M 16 x 45	DIN 933		-	2	-
86	NUS.007	Washer	A; 17 x 30 x 3	DIN 125		4	-	4
86	NUS.007.EE	Washer	A; 17 x 30 x 3	DIN 125		-	4	-
87	NMK.007	Hexagon nut	M 16	DIN 985		2	-	2
	NMK.007.EE	Hexagon nut	M 16	DIN 985		-	2	-
88	NST0003	Square pipe plug	50 x 50 x 14 x 5			1	1	1

(a Design: S = steel, galvanised; E = stainless steel; L = steel, painted)

**Pot**  
**Position 90**



**INLINE**



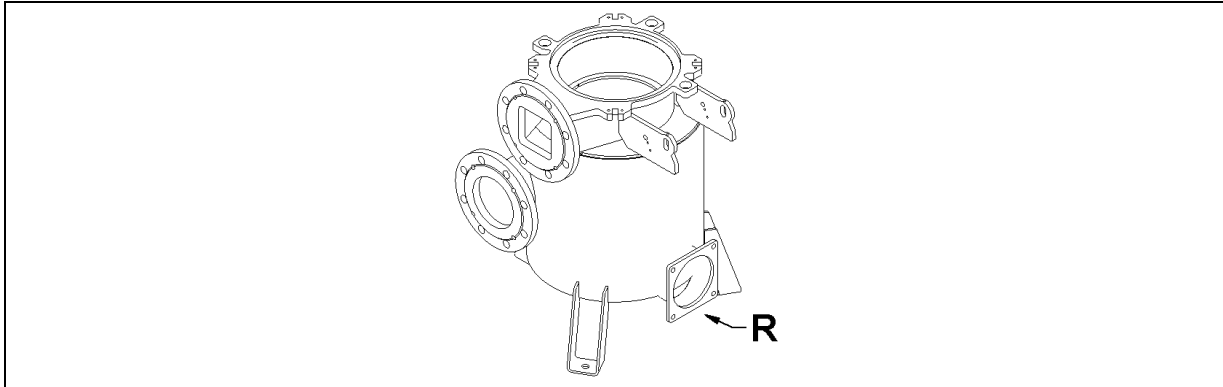
**R1:** Cleaning port 6 inch + blind flange 6 inch (pos. 91-94)  
**R2:** Cleaning port 6 inch + adaptor flange 6 inch DIN/ ANSI (pos.100-107)

Pos.	Part number	Description	Dimensions	Notes	Rep.	S <sup>(a)</sup>	E <sup>(a)</sup>	L <sup>(a)</sup>
<b>1.0038, galvanised</b>								
90	GRC0354	Pot Inline	DN 100/ DN 125	(* Right		1	-	-
	GRC0348	Pot Inline	DN 125/ DN 125	(* Right				
	GRC0353	Pot Inline	DN 150/ DN 150 (combi-flange)	(* Right				
	GRC0357	Pot Inline	4 inch/ 4 inch (ANSI-Flansch)	(* Right				
	GRC0351	Pot Inline	DN 125/ DN 125	(* Left				
<b>1.0038, painted</b>								
90	GRC0356	Pot Inline	DN 100/ DN 100	(* Right		-	-	1
	GRC0350	Pot Inline	DN 125/ DN 125	(* Right				
	GRC0386	Pot Inline	DN 150/ DN 150	(* Right				
	GRC0387	Pot Inline	DN 150/ DN 150	(* Left				
<b>1.4571</b>								
90	GRC0349	Pot Inline	DN 125/ DN 125	(* Right		-	1	-
	GRC0352	Pot Inline	DN 125/ DN 125	(* Left				
	GRC0386	Pot Inline	DN 150/ DN 150	(* Right				
	GRC0387	Pot Inline	DN 150/ DN 150	(* Left				

(\* Position of cleaning port

(a Design: S = steel, galvanised; E = stainless steel; L = steel, painted

**Cyclone separator**



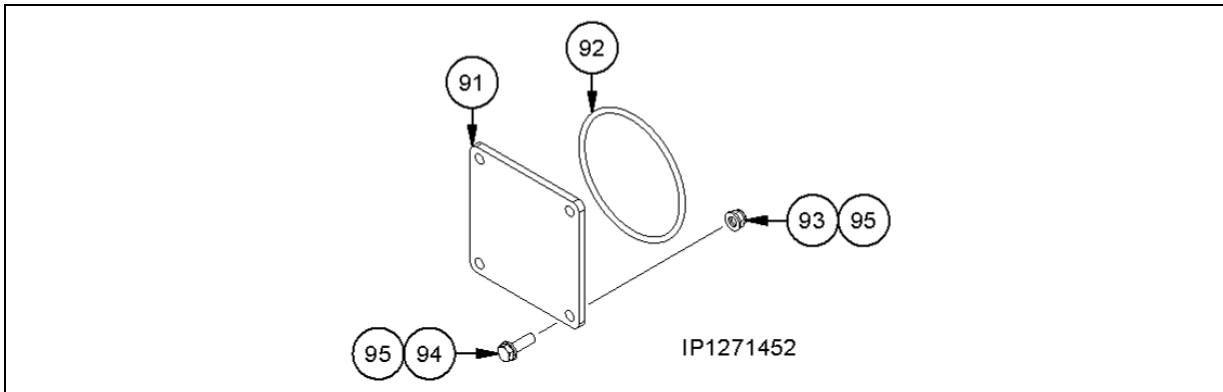
R: Cleaning port 6 inch + blind flange 6 inch (pos. 91-95)

Pos.	Part number	Description	Dimensions	Notes	Rep.	S <sup>(a)</sup>	E <sup>(a)</sup>	L <sup>(a)</sup>
<b>1.0038 galvanised</b>								
90	GRC0358	Cyclone separator	DN 150/ DN 150	(**		1	-	-
	GRC0377	Cyclone separator	DN 150/ DN 150	Mounting of three-point base (**				
<b>1.0038 painted</b>								
90	GRC0374	Cyclone separator	DN 150	(**		-	-	1
	GRC0379	Cyclone separator	DN 150	Mounting of three-point base (**				

(\*\* custom welded as per TINF.RC.005.DE.EN

(a Design: S = steel, galvanised; E = stainless steel; L = steel, painted

**Blind flange + accessories**  
Position 91-95



**6 inch**

Pos.	Part number	Description	Dimensions	Notes	Rep.	S <sup>(a)</sup>	E <sup>(a)</sup>	L <sup>(a)</sup>
91-95	GAS0001	Mounting kit blind flange	6 inch	NBR; 1.0038 galvanised		x	-	-
	GAS0002	Mounting kit blind flange	6 inch	NBR; 1.4571		-	x	-
	GAS0004	Mounting kit blind flange	6 inch	NBR; 1.0038 painted		-	-	x
	GAS0031	Mounting kit blind flange	6 inch	MVQ; 1.0038 galvanised		x	-	-
	GAS0032	Mounting kit blind flange	6 inch	MVQ; 1.4571		-	x	-
	GAS0033	Mounting kit blind flange	6 inch	MVQ; 1.0038 painted		-	-	x

Pos.	Part number	Description	Dimensions	Notes	Rep.	S <sup>(a)</sup>	E <sup>(a)</sup>	L <sup>(a)</sup>
91	GFL.459	Blind flange	6 inch	1.0038 galvanised		1	-	-
	GFL.459.E	Blind flange	6 inch	1.4571		-	1	-
	GFL0216	Blind flange	6 inch	1.0038 painted		-	-	1
92	DOR.016	O-ring	160 x 7	NBR		1	1	1
	DOR.016.SI	O-ring	160 x 7	MVQ; FEP coated				

**Steel**

93	NMK.002	Hexagon nut	M 12	DIN 985		4	-	4
94	NSK.030.E	Hexagon head bolt	M 12 x 40	DIN 933		4	-	4
95	NUS.005	Washer	A; 13 x 24 x 2,5	DIN 125		4	-	4

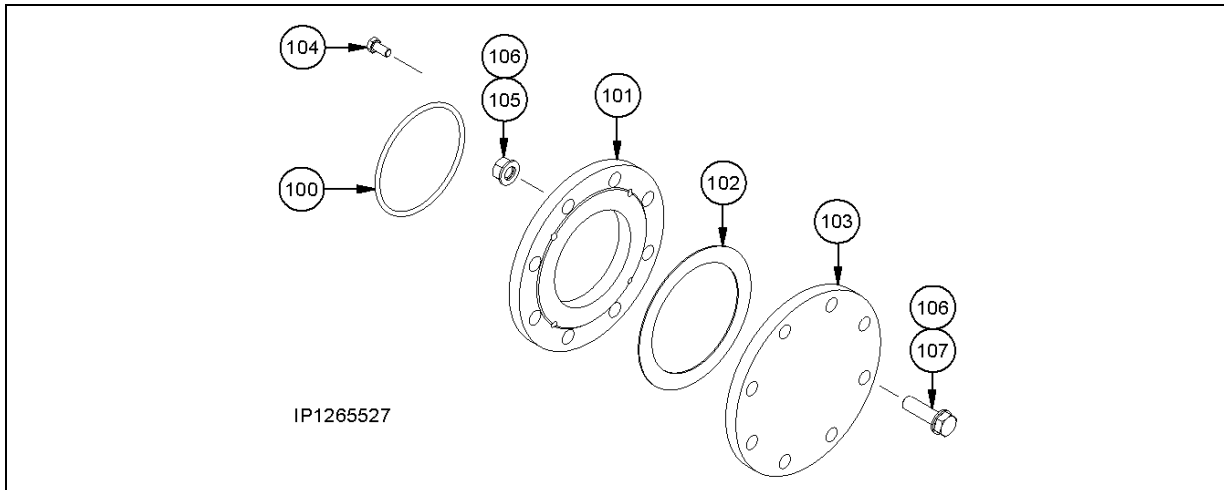
**Stainless steel**

93	NMK.002.EE	Hexagon nut	M 12	DIN 985		-	4	-
94	NSK.030.E	Hexagon head bolt	M 12 x 40	DIN 933		-	4	-
95	NUS.005.E	Washer	A; 13 x 24 x 2,5	DIN 125		-	4	-

(a Design: S = steel, galvanised; E = stainless steel; L = steel, painted



**Adaptor flange DIN/ANSI**  
**Position 100-107**



Pos.	Part number	Description	Dimensions	Notes	Rep.	S <sup>(a)</sup>	E <sup>(a)</sup>	L <sup>(a)</sup>
------	-------------	-------------	------------	-------	------	------------------	------------------	------------------

**1.0038**

100	DOR.016	O-ring	160 x 7	NBR		1	-	1
101	GFL0165	Adaptor flange	DN 150 – ANSI 6 inch	1.0038 galvanised		1	-	-
	GFL0202	Adaptor flange	DN 150 – ANSI 6 inch	1.0038 painted		-	-	1
102	DFD.054	Flange gasket	DN 150			1	-	1
103	GFL.947	DIN blind flange	DN 150	1.0038 galvanised		1	-	1
	GFL0201	DIN blind flange	DN 150	1.0038 painted		1	-	1
104	NSK.042	Hexagon head bolt	M 12 x 25			4	-	4
105	NMS.007	Hexagon nut	M 20			8	-	8
106	NUS.008	Washer	A 21 x 37 x 3			16	-	16
107	NSK.103	Hexagon head bolt	M 20 x 70			8	-	8

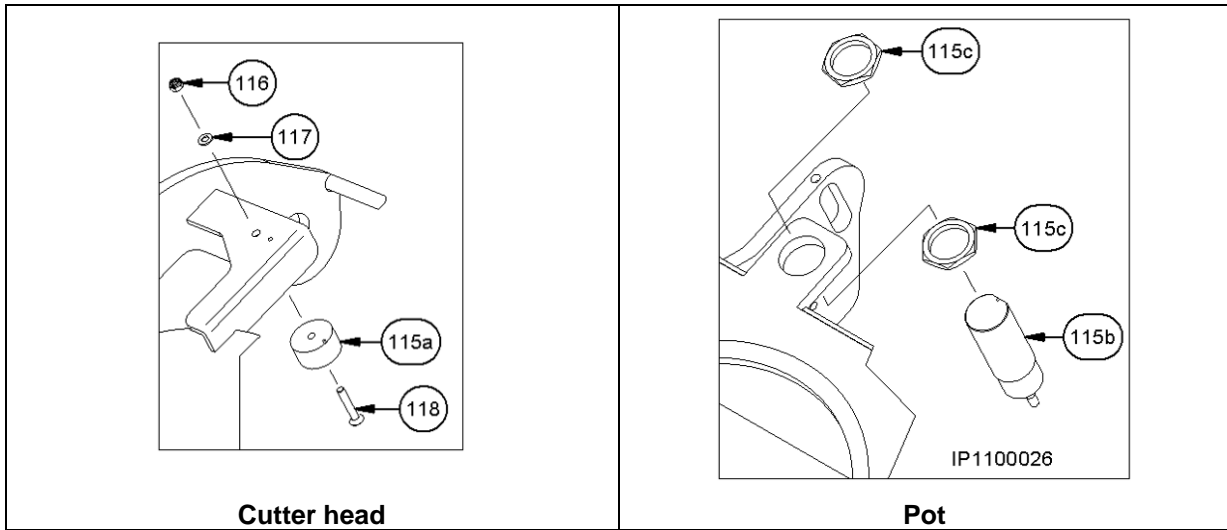
**1.4571**

100	DOR.016	O-ring	160 x 7	NBR		-	1	-
101	GFL0166	Adaptor flange	DN 150 – ANSI 6 inch	1.4571		-	1	-
102	DFD.054	Flange gasket	DN 150			-	1	-
103	GFL.947.E	DIN blind flange	DN 150	1.4571		-	1	-
104	NSK.042.EE	Hexagon head bolt	M 12 x 25	Stainless steel		-	4	-
105	NMS.007.EE	Hexagon nut	M 20	Stainless steel		-	8	-
106	NUS.008.EE	Washer	A 21 x 37 x 3	Stainless steel		-	16	-
107	NSK.103.EE	Hexagon head bolt	M 20 x 70	Stainless steel		-	8	-

(a Design: S = steel, galvanised; E = stainless steel; L = steel, painted

### Safety switch

Detail D



Position 115-118

Pos.	Part number	Description	Dimensions	Notes	Rep.	S <sup>(a)</sup>	E <sup>(a)</sup>	L <sup>(a)</sup>
115	SMD0013	Safety switch		Contains pos.115a-115c		1	1	1
115a	-	Magnetic element				(1)	(1)	(1)
115b	-	Sensor with evaluator				(1)	(1)	(1)
115c	-	Adjusting nut				(2)	(2)	(2)

**Steel**

116	NMK.034	Hexagon nut	M 5	DIN 934		1	-	1
117	NUS.120	Washer	5.3 x 10 x 1	DIN 125		1	-	1
118	NSE.020.E	Countersunk head bolt	M 5 x 30	ISO 10642		1	-	1

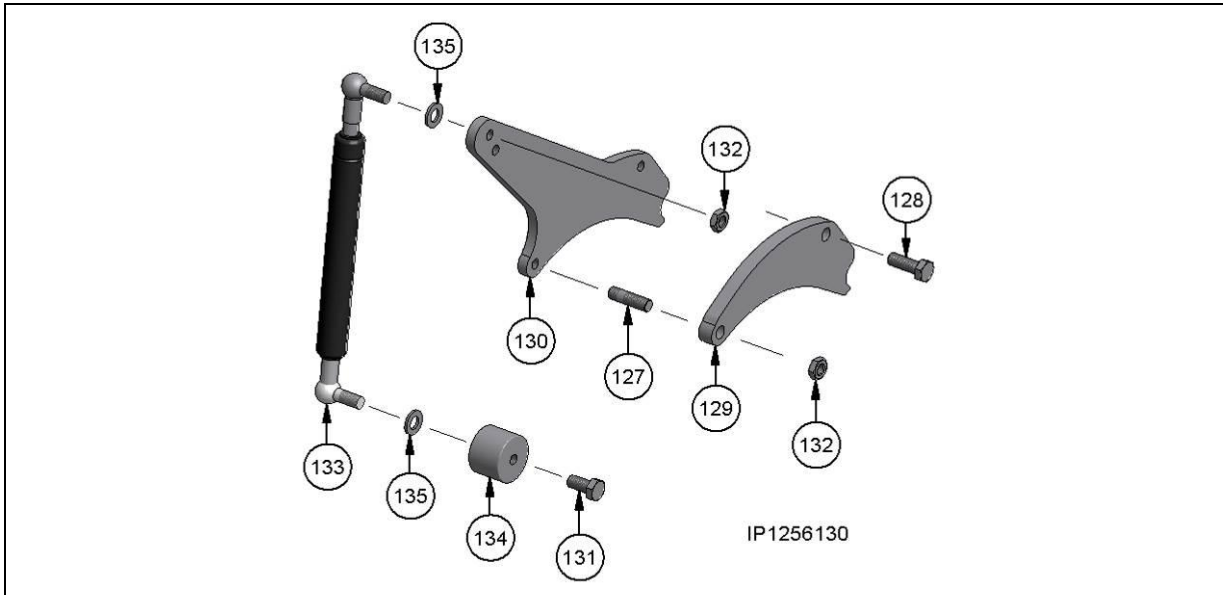
**Stainless steel**

116	NMK.034.EE	Hexagon nut	M 5	DIN 934		-	1	-
117	NUS.120.E	Washer	5.3 x 10 x 1	DIN 125		-	1	-
118	NSE.020.E	Countersunk head bolt	M 5 x 30	ISO 10642		-	1	-

(a Design: S = steel, galvanised; E = stainless steel; L = steel, painted

**Gas spring**

**Detail E**



**Position 127-135**

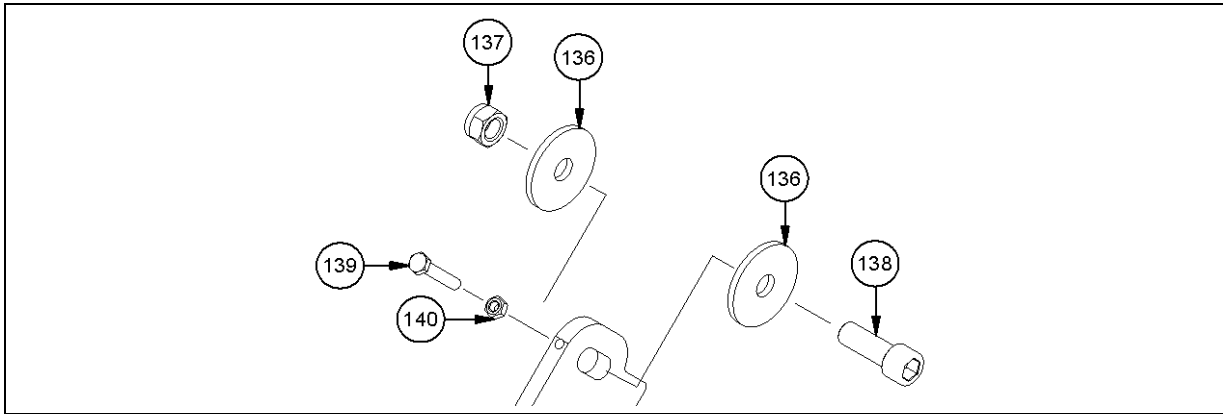
Pos.	Part number	Description	Dimensions	Notes	Rep.	S <sup>(a)</sup>	E <sup>(a)</sup>	L <sup>(a)</sup>
127	NGS.031	Stud	M 12 x 30	DIN 938		1	-	1
	NGS.031.E	Stud	M 12 x 30	DIN 938		-	1	-
128	NSK.029	Hexagon head bolt	M 12 x 35	DIN 933		1	-	1
	NSK.029.EE	Hexagon head bolt	M 12 x 35	DIN 933		-	1	-
129	RFL2764	Holder				1	-	1
	RFL2765	Holder				-	1	1
130	RFL.439	Bracket				1	-	1
	RFL.439.E	Bracket				-	1	-
131	NSK.042	Hexagon head bolt	M 12 x 25	DIN 933		1	-	1
	NSK.042.EE	Hexagon head bolt	M 12 x 25	DIN 933		-	1	-
132	NMK.057	Hexagon nut	M 12	ISO 4035		1	-	1
	NMK0009	Hexagon nut	M 12	ISO 4035		-	1	-
133	NFE.030	Gas spring				1	1	1
134	GRS.175	Coupling				1	-	1
	GRS.175.E	Coupling				-	1	-
135	NUS.005	Washer	A 13 x 24 x 2.5	DIN 125		1	-	1
	NUS.005.E	Washer	A 13 x 24 x 2.5	DIN 125		-	1	-

<sup>(a)</sup> Please specify length when spare parts order!

(a Design: S = steel, galvanised; E = stainless steel; L = steel, painted

**Pivot**

**Detail G**



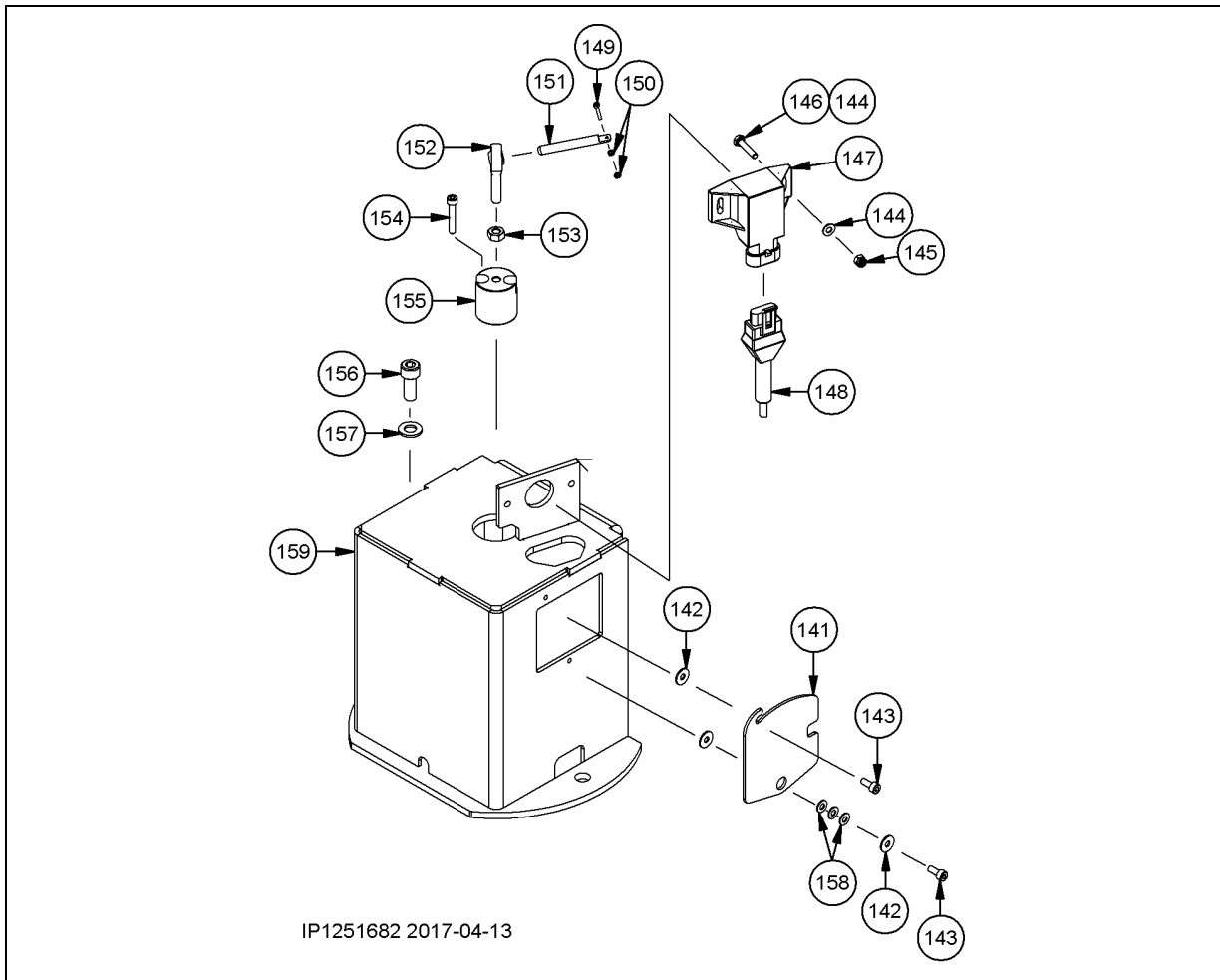
**Position 136-140**

Pos.	Part number	Description	Dimensions	Notes	Rep.	S <sup>(a)</sup>	E <sup>(a)</sup>	L <sup>(a)</sup>
136	NUS.090	Washer	F; 16 x 5 x 60 x 5	DIN 522		4	-	4
	NUS.090.E	Washer	F; 16 x 5 x 60 x 5	DIN 522		-	4	-
137	NMK.007	Hexagon nut	M 16	DIN 985		2	-	2
	NMK.007.EE	Hexagon nut	M 16	DIN 985		-	2	-
138	NSI.045	Cylinder head bolt	M 16 x 45	ISO 4762		2	-	2
	NSI.045.EE	Cylinder head bolt	M 16 x 45	ISO 4762		-	2	-
139	NSK.126	Hexagon head bolt	M 8 x 45	DIN 933		2	-	2
	NSK.203	Hexagon head bolt	M 8 x 45	DIN 933		-	2	-
140	NMS.002	Hexagon nut	M 8	DIN 934-8		2	-	2
	NMS.002.E	Hexagon nut	M 8	DIN 934-8		-	2	-

(a Design: S = steel, galvanised; E = stainless steel; L = steel, painted

**ACC protective cover**

Detail F



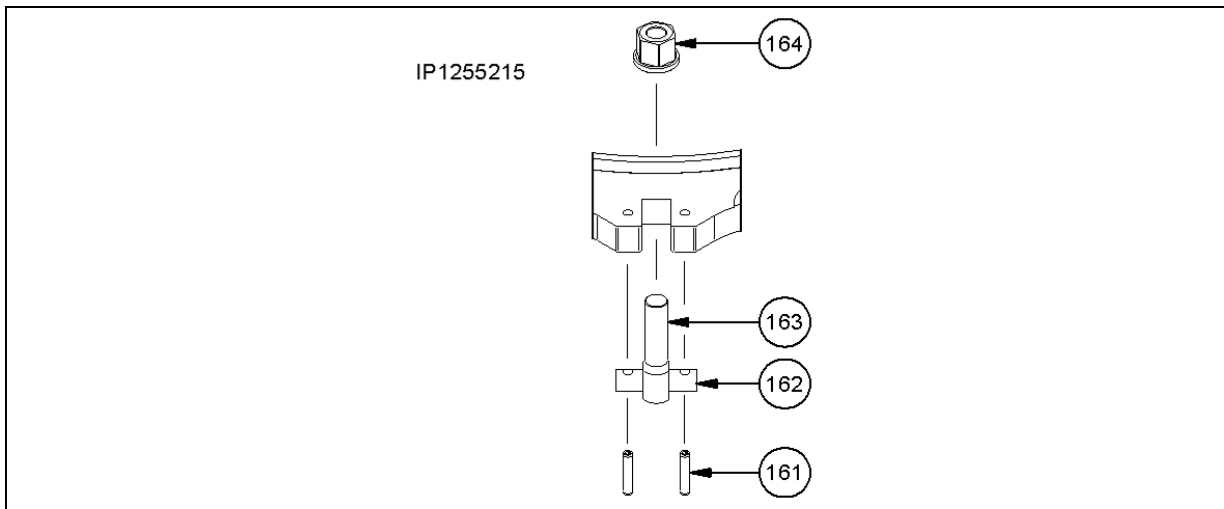
Position 141-158

Pos.	Part number	Description	Dimensions	Notes	Rep.	S <sup>(a)</sup>	E <sup>(a)</sup>	L <sup>(a)</sup>
141	RFL3940	Sheet		For maintenance port			1	
142	NUS.086	Washer	4.3 x 12 x 1				3	
143	NSI.111	Cylinder head bolt	M 4 x 10				2	
144	NUS.069.EE	Washer	A, 4.3 x 9 x 0.8				4	
145	NMS.025.E	Hexagon nut	M 4				2	
146	NSI0141	Cylinder head bolt	M 4 x 16				2	
147	SMD0056	Angle sensor	4-20 mA	Measuring range: 30°			1	
148	EKT0028	Cable with coupling AMP Superseal	10 m				1	
149	NSI0074	Pan head bolt	M 2 x 12				1	
150	NMK0010	Hexagon nut	M2				2	
151	GRS0205	Lever for swivelling angle sensor					1	
152	NGK0017	Swivel head					1	
153	NMS.001	Hexagon nut	M 6				1	
154	NSI.145	Cylinder head bolt	M 4 x 25				2	
155	GRS0206	Receptacle for joint sleeve					1	
156	NSI.015	Cylinder head bolt	M 10 x 20				2	
157	NUS.004	Washer	A; 10.5 x 20 x 2				2	
158	NUS.069	Washer	A, 4.3 x 9 x 0.8				3	
159	IBS2638	ACC protective cover		≥ 5 kW			1	
	IBS2639	ACC protective cover		< 5 kW				

(a Design: S = steel, galvanised; E = stainless steel; L = steel, painted

## Clamping fastener

### Detail H



### Position 160-164

Pos.	Part number	Description	Dimensions	Notes	Rep.	S <sup>(a)</sup>	E <sup>(a)</sup>	L <sup>(a)</sup>
161	NSP.031.E	Spring pin	6 mm x 30 mm	ISO 8752			8	
162	GRS0256	Take-up shaft	M 10			2	-	2
	GRS0484	Take-up shaft	M 10	1.4571		-	2	-
163	NSH0008	Eye bolt	M 10 x 55	DIN 444		2	-	2
	NSH0009	Eye bolt	M 10 x 55	DIN 444		-	2	-
164	NMK.056	Hexagon nut	M 10			2	-	2
	NMK.018.EE	Hexagon nut	M 10			-	2	-






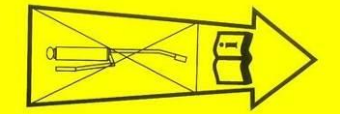


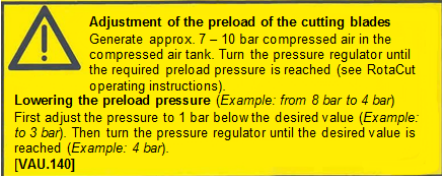
## Buffer fluid tank

### Pos. 179-190

Pos.	Part number	Description	Dimensions	Notes	Rep.	S <sup>(a)</sup>	E <sup>(a)</sup>	L <sup>(a)</sup>
179	HSC.015	Hose	DN 6				1,1 m	
180	NUS.003	Washer	A; 8,4 x 16 x 1,6	DIN 985		2	-	2
	NUS.003.EE	Washer	A; 8,4 x 16 x 1,6	DIN 985		-	2	-
181	NMK.004	Hexagon nut	M 8	DIN 985		2	-	2
	NMK.004.E	Hexagon nut	M 8	DIN 985		-	2	-
182	NSI.153	Cylinder head bolt	M 8 x 130	ISO 4762		2	-	2
	NSI.126.EE	Cylinder head bolt	M 8 x 120	ISO 4762		-	2	-
183	PSG0004	Buffer fluid tank				1	1	1
184	RFL4763	Mounting angle		Pot Inline		1	-	1
	RFL4784	Mounting angle		Cyclone separator				
	RFL4814	Mounting angle		Pot Inline (1.4571)		-	1	-
185	NGE.086	Elbow coupling	8 L			1	1	1
186	NVR.003	Seal bonnet	DKL; DN 6			1	1	1
187	NSI0048	Cylinder head bolt	M 6 x 21 mm			2	-	2
	NSI0108	Cylinder head bolt	M 6 x 21 mm	A4		-	2	-
188	NUS.002	Washer	A 6,4 x 12 x 1,6	DIN 125		2	-	2
	NUS.002.EE	Washer	A 6,4 x 12 x 1,6			-	2	-
189	NMK.003	Hexagon nut	M 6	DIN 985		2	-	2
	NMK.003.EE	Hexagon nut	M 6	DIN 985		-	2	-
190	HRS.104	Pipe cut				2	-	2
	TSE0252	Pipe cut		1.4571		-	2	-

(a Design: S = steel, galvanised; E = stainless steel; L = steel, painted

**Safety sticker**






Pos.	Part number	Description	Dimensions	Notes	Rep.	S <sup>(a)</sup>	E <sup>(a)</sup>	L <sup>(a)</sup>
	VAU.013.EN	Sticker						1
	VAU.133	Sticker						1
	VAU.014	Sticker						1
	VAU.109	Sticker						2
	VAU.012	Sticker						1
	VAU.130	Sticker						1
<b>Inline:</b>								
	VAU.144.EN	Sticker						1
<b>Cyclone separator:</b>								
	VAU.142.EN	Sticker						1
<b>ACC:</b>								
	VAU.140.EN	Sticker						1

(a Design: S = steel, galvanised; E = stainless steel; L = steel, painted

**Operating material**

Pos.	Part number	Description	Dimensions	Notes	Rep.	S <sup>(a)</sup>	E <sup>(a)</sup>	L <sup>(a)</sup>
	BSS.016	Hydraulic oil		Plantohyd 40N			x	
	BSS.006	Hydraulic oil		Titan Gear MP 90			x	
	BSS.010	White oil		W 530; DAB 10			x	
	BKL.002	Locking adhesive		Weicon Lock AN 306-48			x	

**Tools**

Pos.	Part number	Description	Dimensions	Notes	Rep.	S <sup>(a)</sup>	E <sup>(a)</sup>	L <sup>(a)</sup>
	WKZ.082	Tool for installation the cutting blades					x	
	PBA.B006.N1	Assembly tool		Mechanical seal			x	
	WKZ0476	Assembly tool		Radial shaft seal ring			x	
	GMS0001	Open-end spanner		For ACC width across flats 64			x	
	WKZ0475	Torque bracket					x	

(a Design: S = steel, galvanised; E = stainless steel; L = steel, painted



**Required spare parts for mechanical seal change**

Pos.	Part number	Description	Dimensions	Notes	Rep.	S <sup>(a)</sup>	E <sup>(a)</sup>	L <sup>(a)</sup>
18	DGL.B012	Mechanical seal ring		Duronit			2	
19	DOR.034.HNB	O-ring	72.5 x 6.5	HNBR			2	
	DOR.034.SI	O-ring	72.5 x 6.5	MVQ				
20	IBA1242	Inner ring unit	JR 55 x 60 x 25				1	
21	DWD0047	Radial shaft seal ring	WAY 80 x 60 x 7				1	
22	DOR.160	O-ring	48 x 2; NBR	Inner ring unit			2	
	DOR0132	O-ring	48 x 2; MVQ					

**Necessary spare parts for blade change**

Pos.	Part number	Description	Dimensions	Notes	Rep.	S <sup>(a)</sup>	E <sup>(a)</sup>	L <sup>(a)</sup>
<b>Steel</b>								
8	GFL.427.N3.M9	Cutting screen	Max. ø 20 mm	Medium; t = 12 mm		1	-	1
	GFL0035	Cutting screen	Max. ø 28 mm	Coarse				
	GFL.546.M9	Cutting screen	Max. ø 4 mm	Honey comb				
	GFL.570.M9	Cutting screen	Max. ø 8 mm	Honey comb				
	GFL.480.M9	Cutting screen	Max. ø 12 mm	Honey comb				
	GFL.449.M9	Cutting screen	Max. ø 15 mm	Honey comb				
<b>Stainless steel</b>								
8	GFL.427.N3.E3	Cutting screen	Max. ø 20 mm	Standard		(1)	1	(1)
	GFL.495.N1.E3	Cutting screen	Max. ø 28 mm	Coarse				
	GFL.546.E3	Cutting screen	Max. ø 4 mm	Honey comb				
	GFL.570.E3	Cutting screen	Max. ø 8 mm	Honey comb				
	GFL.480.E3	Cutting screen	Max. ø 12 mm	Honey comb				
	GFL.449.E3	Cutting screen	Max. ø 15 mm	Honey comb				
		Max. ø = max. free passage						
The cutting screen <b>pos. 8</b> can be turned <b>once</b> so it doesn't have to be replaced until the next cutting blade change!								
9	GRS.203.EE	Clamp bolt				3	3	3
	GRS.202	Spring pin				3	-	3
	GRS.202.EE	Spring pin				-	3	-
11	GSM.006.T1.E4	Blade	8 mm	Hoch		4	4	4
12	NSP.030.E	Spring pin	10 x 30			4	4	4
	NSP.031.E	Spring pin	6 x 30			4	4	4
13	ZDFD.390.0110	Polyethylene cord				4	4	4

(a Design: S = steel, galvanised; E = stainless steel; L = steel, painted

**Required spare parts for wear part replacement**

Pos.	Part number	Description	Dimensions	Notes	Rep.	S <sup>(a)</sup>	E <sup>(a)</sup>	L <sup>(a)</sup>
<b>Steel</b>								
8	GFL.427.N3.M9	Cutting screen	Max. ø 20 mm	Medium; t = 12 mm		1	-	1
	GFL0035	Cutting screen	Max. ø 28 mm	Coarse				
	GFL.546.M9	Cutting screen	Max. ø 4 mm	Honey comb				
	GFL.570.M9	Cutting screen	Max. ø 8 mm	Honey comb				
	GFL.480.M9	Cutting screen	Max. ø 12 mm	Honey comb				
	GFL.449.M9	Cutting screen	Max. ø 15 mm	Honey comb				
<b>Stainless steel</b>								
8	GFL.427.N3.E3	Cutting screen	Max. ø 20 mm	Standard		(1)	1	(1)
	GFL.495.N1.E3	Cutting screen	Max. ø 28 mm	Coarse				
	GFL.546.E3	Cutting screen	Max. ø 4 mm	Honey comb				
	GFL.570.E3	Cutting screen	Max. ø 8 mm	Honey comb				
	GFL.480.E3	Cutting screen	Max. ø 12 mm	Honey comb				
	GFL.449.E3	Cutting screen	Max. ø 15 mm	Honey comb				
		Max. ø = max. free passage						
The cutting screen <b>pos. 8</b> can be turned <b>once</b> so it doesn't have to be replaced until the next cutting blade change!								
9	GRS.203.EE	Clamp bolt				3	3	3
	GRS.202	Spring pin				3	-	3
	GRS.202.EE	Spring pin				-	3	-
11	GSM.006.T1.E4	Blade	8 mm	Hoch		4	4	4
12	NSP.030.E	Spring pin	10 x 30			4	4	4
	NSP.031.E	Spring pin	6 x 30			4	4	4
13	ZDFD.390.0110	Polyethylene cord				4	4	4
18	DGL.B012	Mechanical seal ring		Duronit			2	
19	DOR.034.HNB	O-ring	72.5 x 6.5	HNBR			2	
	DOR.034.SI	O-ring	72.5 x 6.5	MVQ				
20	IBA1242	Inner ring unit	JR 55 x 60 x 25				1	
21	DWD0047	Radial shaft seal ring	WAY 80 x 60 x 7				1	
22	DOR.160	O-ring	48 x 2; NBR	Inner ring unit			2	
	DOR0132	O-ring	48 x 2; MVQ					

**Note:** If the wall thickness of the pot or the sheet steel casing of the cutting head is reduced by more than 1 mm through wear or corrosion then the pot (Pos.90) or cutter head (Pos.1) should be replaced.

(a Design: S = steel, galvanised; E = stainless steel; L = steel, painted

**VOGELSANG**



**Hugo Vogelsang Maschinenbau GmbH**

Holthöge 10-14  
49632 Essen/Oldb.

Phone: +49 (0) 54 34 83 0  
Fax: +49 (0) 54 34 83 10

vogelsang-gmbh.com  
info@vogelsang-gmbh.com

**ENGINEERED TO WORK**

**Australien**  
**Vogelsang Pty. Ltd.**  
vogelsang.com.au

**Indien**  
**Vogelsang India Private Limited**  
vogelsangindia.com

**Russland**  
**Vogelsang Russland**  
vogelsang.ru

**Brasilien**  
**Vogelsang Brasil Ltda.**  
vogelsang.com.br

**Irland**  
**Vogelsang Ireland**  
vogelsang.ie

**Schweden**  
**Vogelsang Sverige AB**  
vogelsang.se

**China**  
**Vogelsang Mechanical Engineering (Shanghai) Co., Ltd.**  
vogelsang.com.cn

**Italien**  
**Vogelsang Italy Srl**  
vogelsang-srl.it

**Spanien**  
**Vogelsang S.L.**  
vogelsang.es

**Dänemark**  
**Vogelsang A/S**  
vogelsang-as.dk

**Malaysia**  
**Vogelsang Malaysia**  
vogelsang.info

**Südkorea**  
**Vogelsang Korea Co., Ltd.**  
vogelsang.co.kr

**Deutschland - Niederlassung Ost**  
**Vogelsang Lutherstadt Eisleben**  
vogelsang-gmbh.com

**Mexico**  
**Vogelsang De México S.de R.L. de CV**  
vogelsang.mx

**Tschechische Republik**  
**Vogelsang CZ s.r.o.**  
vogelsang-czech.cz

**Finnland**  
**Vogelsang Oy**  
vogelsang.fi

**Polen**  
**Vogelsang Poland Sp. z o.o.**  
vogelsang.pl

**USA**  
**Vogelsang USA Ltd.**  
vogelsangusa.com

**Frankreich**  
**Vogelsang France S.A.R.L.**  
vogelsang.fr

**Österreich**  
**Vogelsang Austria GmbH**  
vogelsang-austria.at

**Großbritannien**  
**Vogelsang Ltd.**  
vogelsang.co.uk

**Rumänien**  
**Vogelsang Romania SRL**  
vogelsang.ro