

Technical Information

ExaCut ECL

Converting the eccentric adjuster

Target: Reduction of preload pressure from 100% to 75% or 50%

<p>Eccentric adjuster with 100% preload pressure has a total of eight hinge springs</p>	<p>Eccentric adjuster with 75% preload pressure has a total of six hinge springs</p>	<p>Eccentric adjuster with 50% preload pressure has a total of four hinge springs</p>

Fig. 1: Overview of eccentric adjusters

Reduction of preload pressure from 100% to 75%

The preload pressure is reduced from 100% to 75% by cutting through the outer hinge spring on one side with a side cutter.

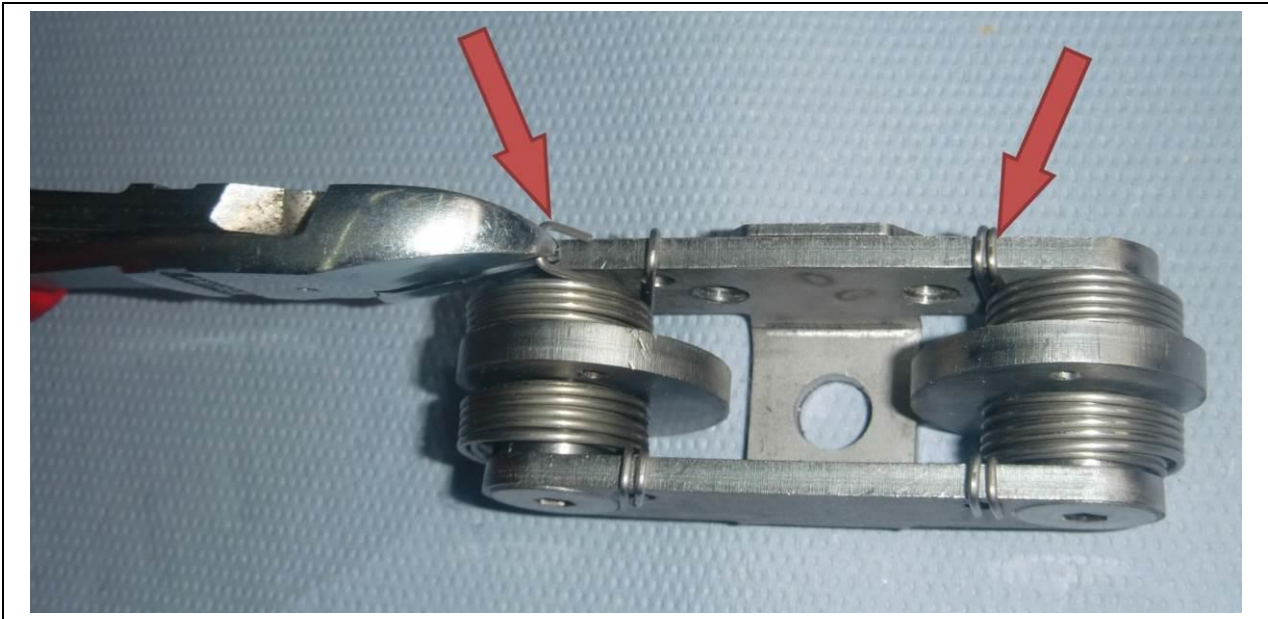


Fig. 2: Reduction of preload pressure to 75%

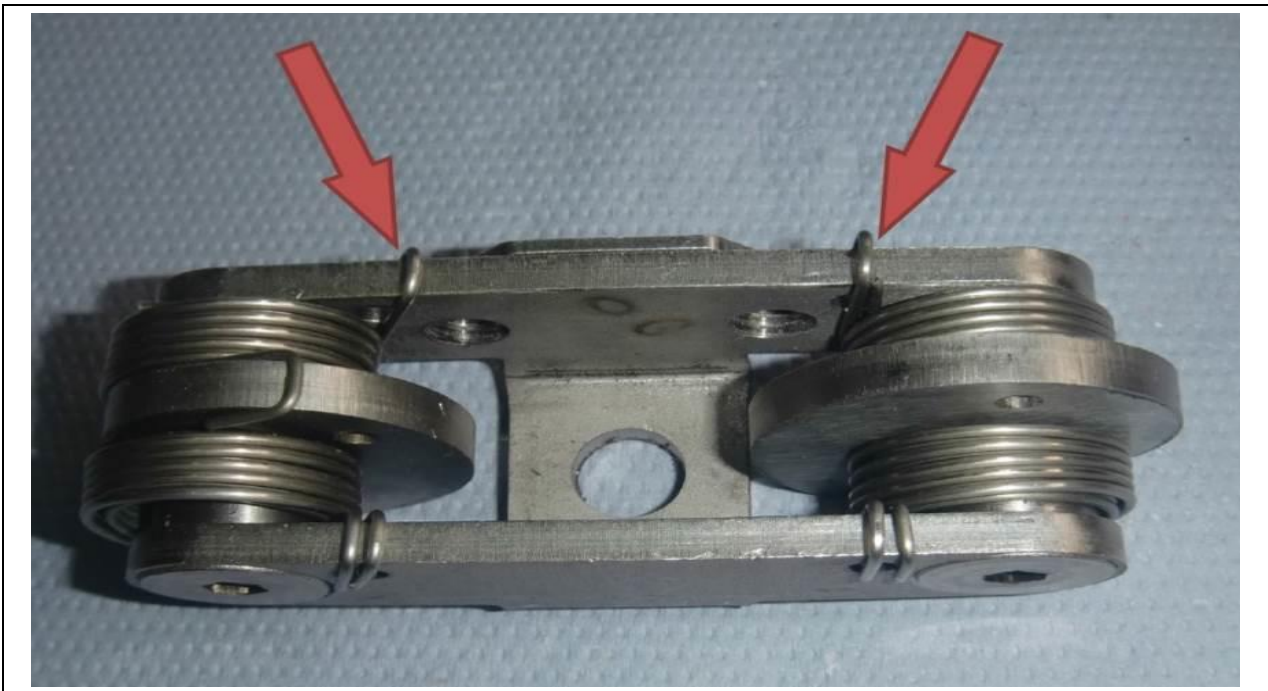


Fig. 3: Eccentric adjuster with 75% preload pressure: two hinge springs cut through

The eccentric adjuster with the cut springs can be tensioned and installed again.



"Package insert BPZ.08 / BPZ.09 eccentric adjuster ECL24 / eccentric adjuster ECL30 / ECL 40."

Reduction of preload pressure from 100% to 50%

The preload pressure is reduced from 100% to 50% by cutting through the outer hinge spring on both sides with a side cutter.

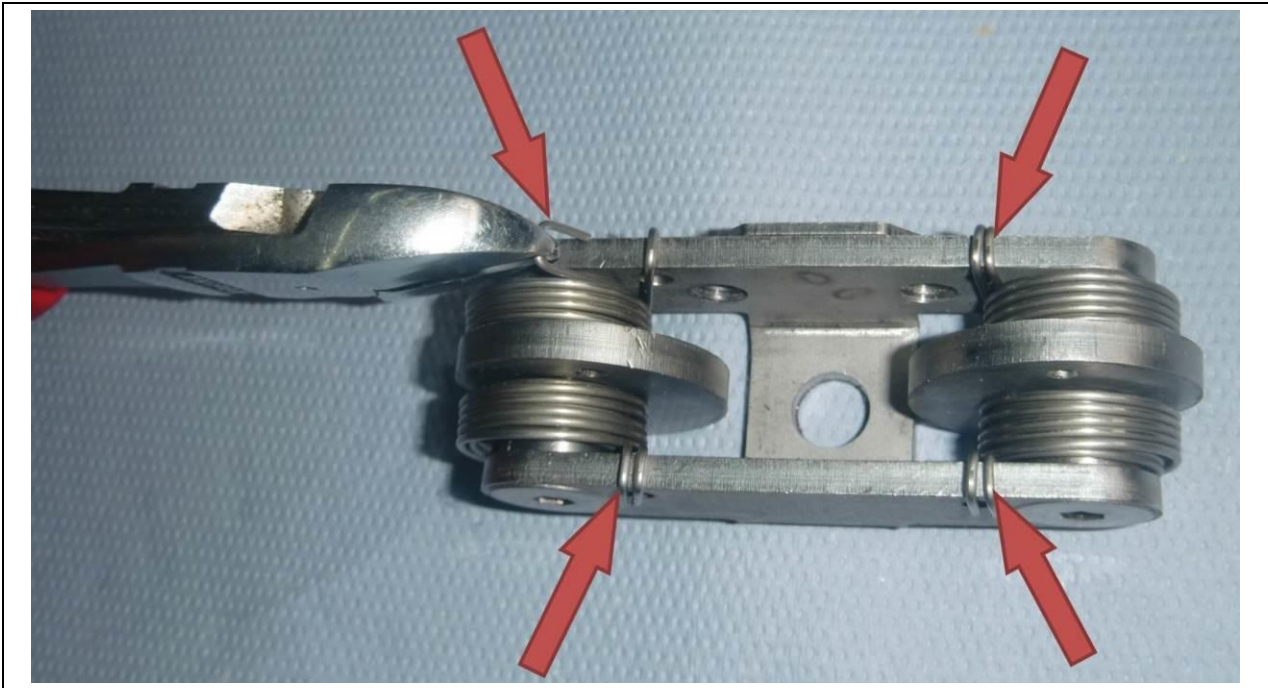


Fig. 4: Reduction of preload pressure to 50%

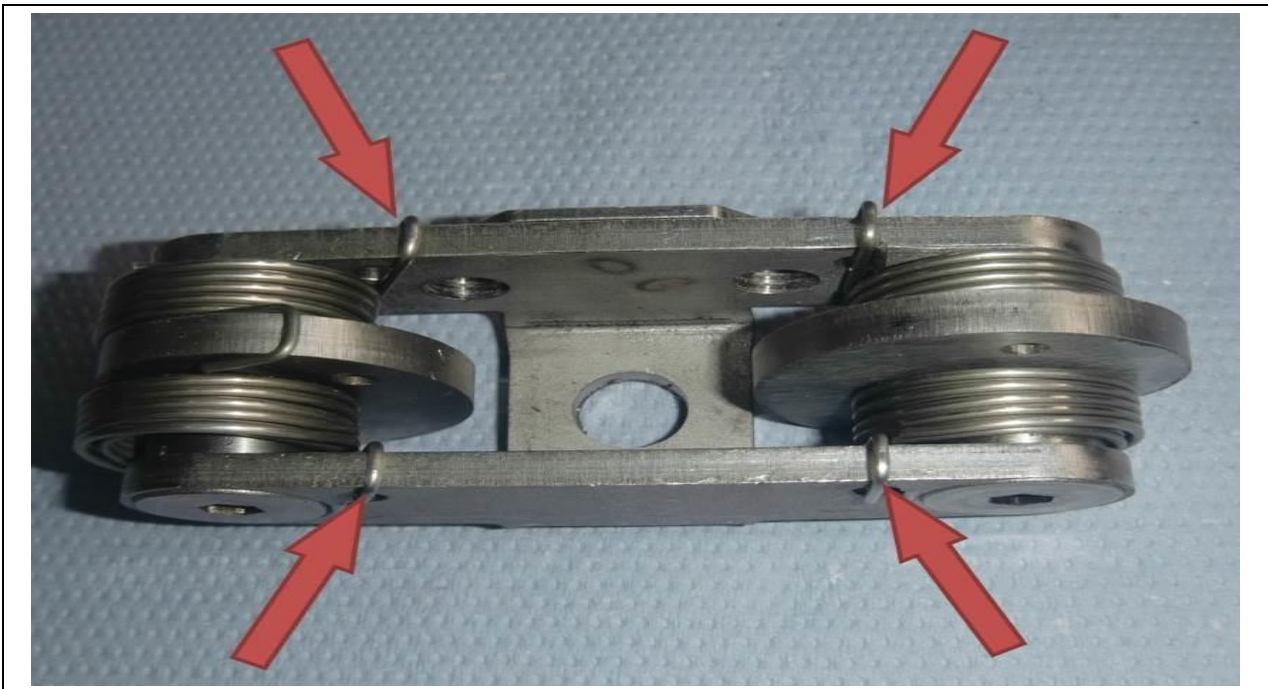


Fig. 5: Eccentric adjuster with 50% preload pressure: four hinge springs cut through

The eccentric adjuster with the cut springs can be tensioned and installed again.



"Package insert BPZ.08 / BPZ.09 eccentric adjuster ECL24 / eccentric adjuster ECL30 / ECL 40."