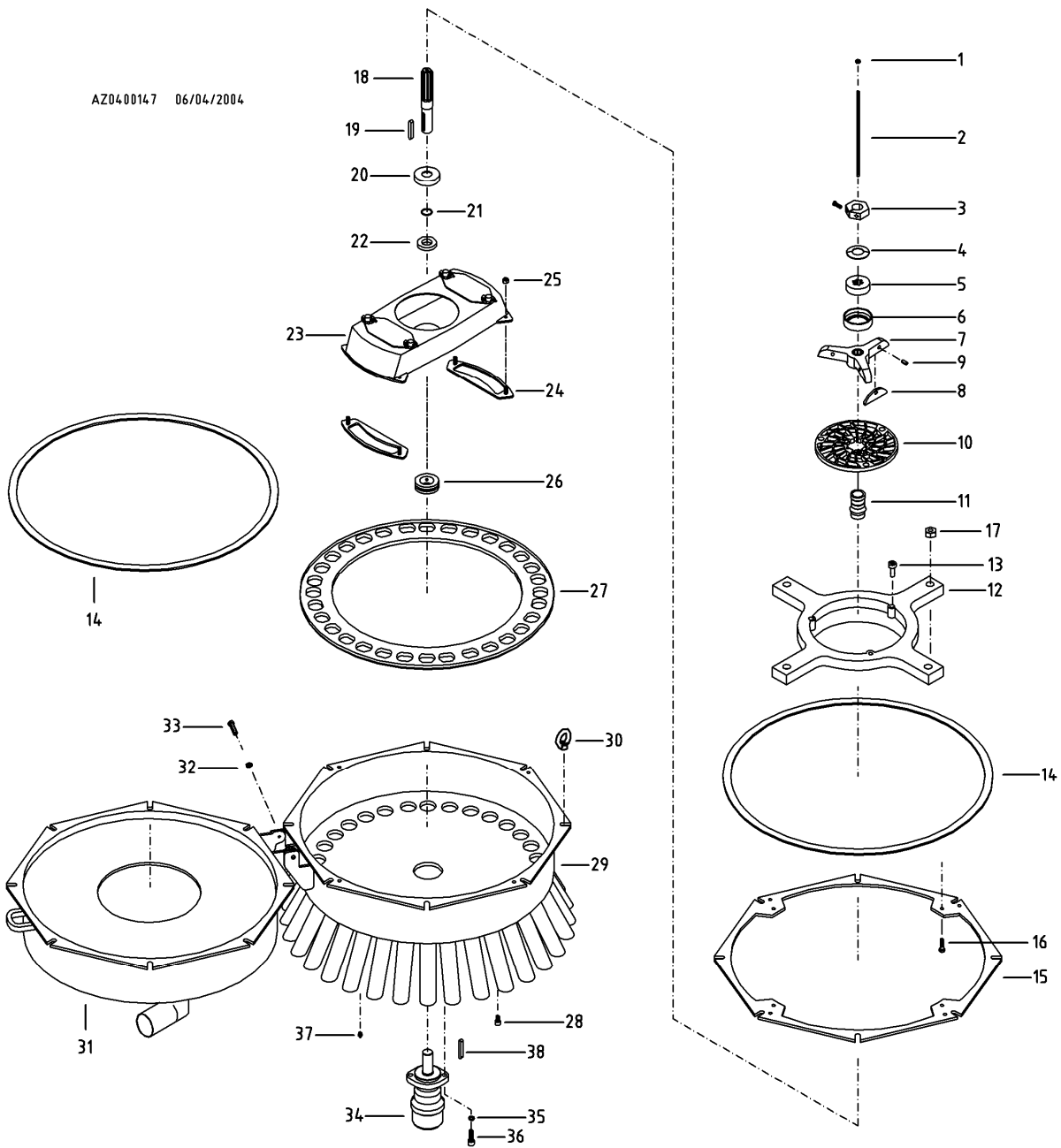


Ersatzteil-Liste
DosiCut ø 800
Spare Parts List

LV 38 DN50 - LV 40 DN50 - LV 44 DN50 - LV 45 DN50 - LV50 DN50



Pos	Art.-Nr. Art.-No.	Beschreibung	Description	Stück Piece	LV 38 DN50	LV 40 DN50	LV 44 DN50	LV 45 DN50	LV 50 DN50
1	NMK.004.E	Mutter M8, selbstsichernd	Hex nut M8 self-locking		1	1	1	1	1
2	NGS.010	Gewindestange M8	Threaded rod M8		0,28m	0,28m	0,28m	0,28m	0,28m
3	NMS.016	Spannmutter	Tension nut		1	1	1	1	1
4	NTF.001	Tellerfeder	Disk spring		1	1	1	1	1
5	DFD.110	Gummischeibe	Rubber disk		1	1	1	1	1
6	PRS.100	Gummischeiben-/ Tellerfederschutz	Protection ring		1	1	1	1	1
	GFK.002	Messerrotor komplett, bestehend aus: Rotor, Schneidmessern, Spannstiften und Schmiernippel	Knife rotor complete, consisting of: rotor, cutter blades, dowel pins and grease nipple		1	1	1	1	1
7	GFM.004	Messerrotor	Knife rotor		1	1	1	1	1
8	GSM.006	Schneidmesser	Cutter blade		3	3	3	3	3
9	NSP.006	Spannhülse	Dowel pin		3	3	3	3	3
10	GFL.495.N1.M9	Schneidsieb (Standard) max ø 28 mm	Cutter screen (standard) max ø 28 mm		1	1	1	1	1
	GFL.427.N2.M9	Schneidsieb (Option) max ø 20 mm	Cutter screen (option) max ø 20 mm						
11	DFD.111	Gummimuffe	Rubber bushing		1	1	1	1	1
12	TDT.001.N1	Tragring DosiCut	Supporting ring DosiCut		1	1	1	1	1
13	NSI.027	Zylinderschraube M12 x 25	Hex socket head screw M12 x 25		3	3	3	3	3
14	TFD.021	Zellkautschuk 15 x 4	Foam rubber 15 x 4		2,6 m	2,6 m	2,6 m	2,6 m	2,6 m
15	RFL.366	Flansch für Tragring	Flange for supporting ring		1	1	1	1	1
16	NSK.001	Sechskantschraube M10 x 30	Hex head screw M10 x 30		4	4	4	4	4
17	NMK.001	Sechskantmutter M10 selbsts.	Hex nut M10 self-locking		4	4	4	4	4
18	GWE.008	Welle DosiCut	Shaft DosiCut		1	1	1	1	1
19	NPF.053	Passfeder 10 x 8 x 45	Key 10 x 8 x 45		1	1	1	1	1
20	GRS.076	Träger Vorspannelement	Carrier for rubber disk		1	1	1	1	1
21	DOR.021	O-Ring 24 x 3	o-ring 24 x 3		1	1	1	1	1
22	DFD.112	Gummischeibe DosiCut	Rubber disk DosiCut		1	1	1	1	1
23	TRO.127.N2	Sternrotor 200 mm breit	Star rotor 200 mm width		1	1	1	1	1
24	TMS.127.N1	Messer komplett 200 mm breit	Knife complete 200 mm width		2	2	2	2	2
25	NMS.021	SKT-Mutter M10 (in TMS enthalten)	Hex nut M10 (included in TMS)		4	4	4	4	4
26	DFD.083	Dichtung	Gasket		1	1	1	1	1
27	TFL.380	Schneidring LV 38 DN 50	Cutting ring LV 38 DN 50		1	-	-	-	-
	TFL.377	Schneidring LV 40 DN 50	Cutting ring LV 40 DN 50		-	1	-	-	-
	TFL.434	Schneidring LV 44 DN 50	Cutting ring LV 44 DN 50		-	-	1	-	-
	TFL.432	Schneidring LV 45 DN 50	Cutting ring LV 45 DN 50		-	-	-	1	-
	TFL.665	Schneidring LV 50 DN 50	Cutting ring LV 50 DN 50		-	-	-	-	1
28	NSI.017	Zylinderschraube M10 x 16	Hex socket head screw M10 x 16		8	8	8	8	8
29	TGE.063.N2	Gehäuse LV 38 DN 50	Housing LV 38 DN 50		1	-	-	-	-
	TGE.064.N2	Gehäuse LV 40 DN 50	Housing LV 40 DN 50		-	1	-	-	-
	TGE.066.N2	Gehäuse LV 44 DN 50	Housing LV 44 DN 50		-	-	1	-	-
	TGE.067.N2	Gehäuse LV 45 DN 50	Housing LV 45 DN 50		-	-	-	1	-
	TGE.068.N2	Gehäuse LV 50 DN 50	Housing LV 50 DN 50		-	-	-	-	1
30	NMK.009	Ringmutter M12	Lifting eye nut M12		8	8	8	8	8
31	TDO.001.N1	Oberteil DosiCut	Cover DosiCut		1	1	1	1	1
32	NMK.002	Mutter M12, selbstsichernd	Hex nut M12, self-locking		2	2	2	2	2
33	NSK.029	Sechskantschraube M12 x 35	Hex head screw M12 x 35		2	2	2	2	2
34	AOM.018	Hydraulikmotor OMS 250	hydraulic motor OMS 250		1	1	1	1	1
35	NFR.004	Federring M12	Washer M12		2	2	2	2	2
36	NSK.029	Sechskantschraube M12 x 35	Hex head screw M12 x 35		2	2	2	2	2



DosiCut ø 800

Ersatzteil-Liste

Spare Parts List

LV 38 DN50 - LV 40 DN50 - LV 44 DN50 - LV 45 DN50 – LV50 DN50

Pos	Art.-Nr. Art.-No.	Beschreibung	Description	Stück Piece	LV 38 DN50	LV 40 DN50	LV 44 DN50	LV 45 DN50	LV 50 DN50
37	NKS.001	Schmiernippel	Grease nipple		1	1	1	1	1
38	NPF.053	Passfeder A 10 x 8 x 45	Key A 10 x 8 x 45		1	1	1	1	1